

## 2016 SKI ASSEMBLY

C3 POWERSPORTS 2014 LTD

#1 - 17 RENAULT CRESENT,  
ST. ALBERT, AB. T8N 4B7

PH 780 419-2040 888 267-5554 www.c3powersports.com

PROPRIETARY AND CONFIDENTIAL

THE INFORMATION CONTAINED IN THIS DRAWING IS THE SOLE PROPERTY OF C3 POWERSPORTS 2014 LTD. ANY REPRODUCTION IN PART OR AS A WHOLE WITHOUT THE WRITTEN PERMISSION OF C3 POWERSPORTS 2014 LTD IS PROHIBITED.



DWG. NO.

REV.

YASK1090 D8

DATE

AUG 28-2015

WEIGHT: 11.957

ITEM NO.	PART NUMBER	DESCRIPTION	QTY.
1	YPSK1094	SKI, BLACK	1
2	YPSK1195	SKI HANDLE, BLACK	1
3	YPSK1632	SKAG, HARDOX, WELDED	1
4	YPHW1030	BOLT M6-1.0 X 55mm FLANGE HEAD 8mm HEX DRIVE Ti	2
5	YPHW1003	BOLT, M8-1.25 X 16mm, FLANGE HEAD 12mm HEX DRIVE, Ti	4
6	YPHW1066	SCREW, M6-2.75 x 16mm, FLANGE HEAD 6mm HEX DRIVE	4
7	YPSK1167	SKI, OUTSIDE RUNNER	2
8	YPHW1063	NUT, M6-1.0, FLANGE NYLOCK, Ti	2
9	YPSK1317	SKI RECIEVER, ONE PIECE, TS	1
10	YPSK1171	BUMPER, SKI, YETI ASM	1
11	YPHW1599	BOLT, M10-1.25 x 110 FLANGE HEAD 12mm HEX DRIVE, Ti	1
12	YPHW1059	NUT, M10-1.25, ALL METAL SELF LOCKING	1
13	YPSP1172	BUSHING, ASM TO YETI SPINDLE, 10MM ID	1
14	YPHW1263	NUT, M10-1.5 FLANGED NYLON LOCK	2

## 2016 SKI ASSEMBLY

**C3 POWERSPORTS 2014 LTD**

#1 - 17 RENAULT CRESENT,  
ST. ALBERT, AB. T8N 4B7

PH 780 419-2040 888 267-5554 www.c3powersports.com

**PROPRIETARY AND CONFIDENTIAL**

THE INFORMATION CONTAINED IN THIS DRAWING IS THE SOLE PROPERTY OF C3 POWERSPORTS 2014 LTD. ANY REPRODUCTION IN PART OR AS A WHOLE WITHOUT THE WRITTEN PERMISSION OF C3 POWERSPORTS 2014 LTD IS PROHIBITED.



DWG. NO.

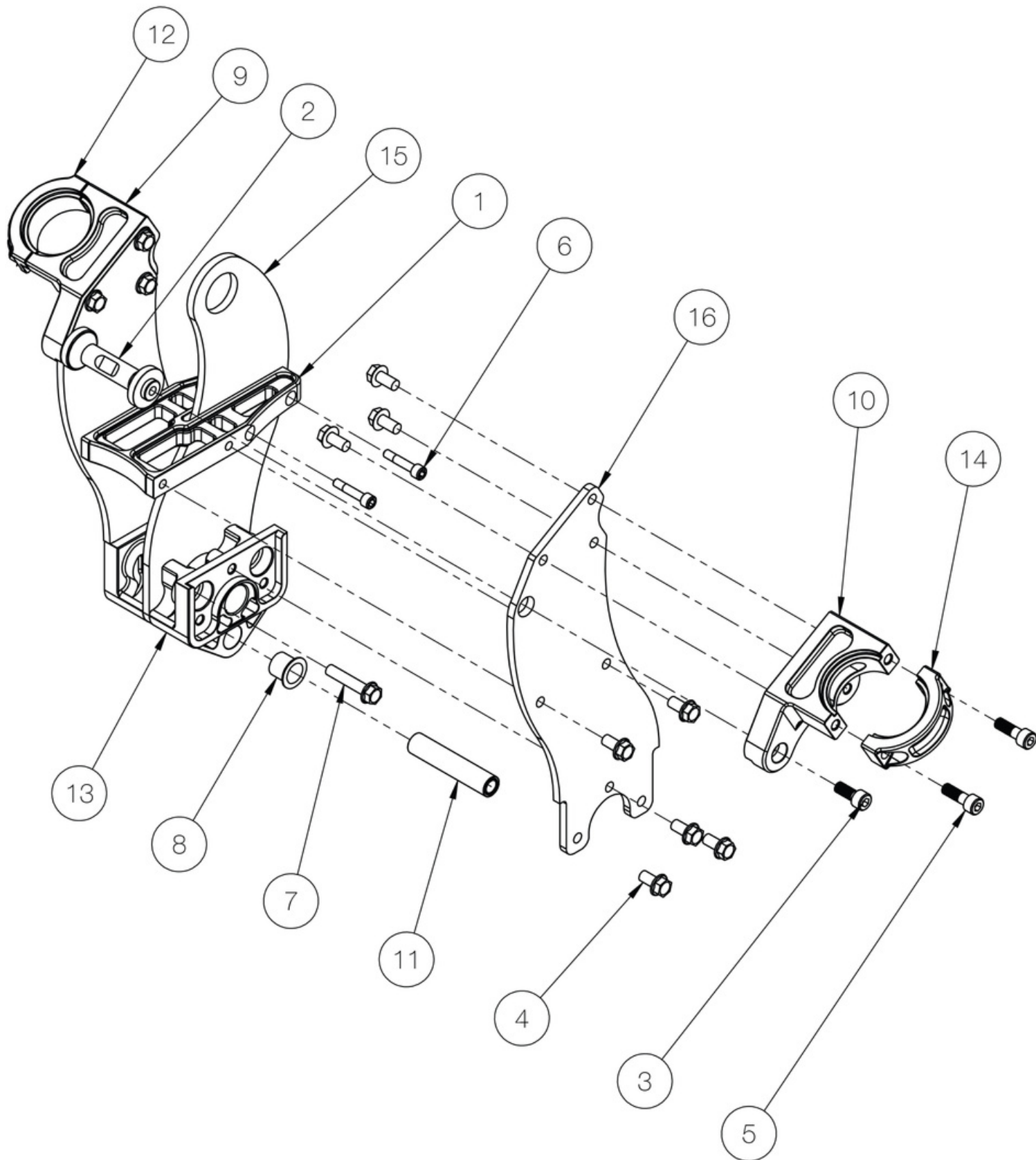
REV.

**YASK1090 D8**

DATE

**AUG 28-2015**

WEIGHT: 11.957



2016 SPINDLE ASSEMBLY, 26MM AXLE, 35MM OFFSET, 48MM FORK, 190MM CL

C3 POWERSPORTS 2014 LTD

#1 - 17 RENAULT CRESENT,  
ST. ALBERT, AB. T8N 4B7

PH 780 419-2040 888 267-5554 www.c3powersports.com

PROPRIETARY AND CONFIDENTIAL

THE INFORMATION CONTAINED IN THIS DRAWING IS THE SOLE PROPERTY OF C3  
POWERSPORTS 2014 LTD. ANY REPRODUCTION IN PART OR AS A WHOLE WITHOUT THE  
WRITTEN PERMISSION OF C3 POWERSPORTS 2014 LTD IS PROHIBITED.



DWG. NO.

REV.

YASP1169 D1

DATE

AUG 28-2015

WEIGHT: 5.52



ITEM NO.	PART NUMBER	DESCRIPTION	QTY.
1	YPSP1079	SPINDLE BLADE SPACER, 15.5	1
2	YPSP1028	SPINDLE FORK CLAMP SPACER	1
3	YPHW1009	BOLT, M8-1.25 X 20mm, SOCKET HEAD 6mm DRIVE, Ti	2
4	YPHW1003	BOLT, M8-1.25 X 16mm, FLANGE HEAD 12mm HEX DRIVE, Ti	16
5	YPHW1008	BOLT, M8-1.25 X 25mm, SOCKET HEAD 6mm DRIVE, Ti	4
6	YPHW1594	BOLT, M6-1.0 X 30mm, SOCKET HEAD 5mm DRIVE, Ti	2
7	YPHW1010	BOLT, M8-1.25 X 40mm, FLANGE HEAD 12mm HEX DRIVE, Ti	2
8	YPHW1611	BEARING, IGLIDE Q2-EXTREME LOAD, 16MM ID X 18MM OD X 17MM LONG, 2MM FLANGE	2
9	YPSP1431	SPINDLE FORK CLAMP, LH, 1/4" BLADE	1
10	YPSP1432	SPINDLE FORK CLAMP, RH, 1/4" BLADE	1
11	YPSP1172	BUSHING, ASM TO YETI SPINDLE, 10MM ID	1
12	YPSP1165	SPINDLE FORK CLAMP CAP, 48MM, LH	1
13	YPSP1430	SPINDLE 1/2 BLOCK, ASM, 1/4" BLADE	2
14	YPSP1023	SPINDLE FORK CLAMP CAP, RH	1
15	YPSP1168	SPINDLE BLADE, CENTER, 15.5 AXLE, 35MM OFFSET, KTM, BETA, ASM	1
16	YPSP1433	SPINDLE BLADE OUTSIDE, LH, RH, 15.5, 1/4" BLADE	2

## 2016 SPINDLE ASSEMBLY, 26MM AXLE, 35MM OFFSET, 48MM FORK, 190MM CL

C3 POWERSPORTS 2014 LTD

#1 - 17 RENAULT CRESENT,  
ST. ALBERT, AB. T8N 4B7

PH 780 419-2040 888 267-5554 www.c3powersports.com

PROPRIETARY AND CONFIDENTIAL

THE INFORMATION CONTAINED IN THIS DRAWING IS THE SOLE PROPERTY OF C3 POWERSPORTS 2014 LTD. ANY REPRODUCTION IN PART OR AS A WHOLE WITHOUT THE WRITTEN PERMISSION OF C3 POWERSPORTS 2014 LTD IS PROHIBITED.



DWG. NO.

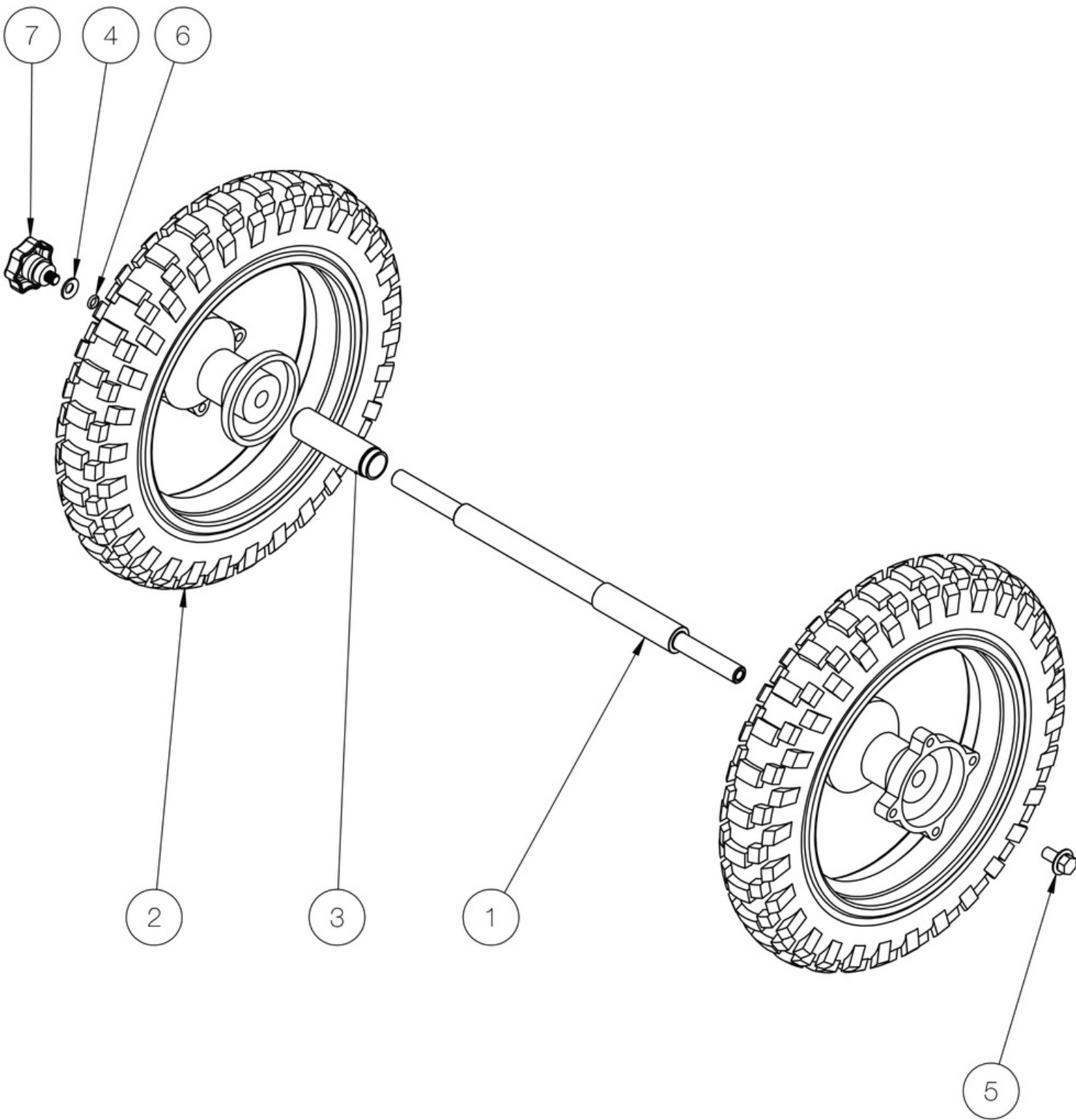
REV.

YASP1169 D1

DATE

AUG 28-2015

WEIGHT: 5.52



## FREEWHEEL KIT, YETI

C3 POWERSPORTS 2014 LTD  
 #1 - 17 RENAULT CRESENT,  
 ST. ALBERT, AB. T8N 4B7  
 PH 780 419-2040 888 267-5554 www.c3powersports.com



DWG. NO.	YAAC1281 D1	REV.
DATE	AUG 28-2015	WEIGHT:

**PROPRIETARY AND CONFIDENTIAL**  
 THE INFORMATION CONTAINED IN THIS DRAWING IS THE SOLE PROPERTY OF C3 POWERSPORTS 2014 LTD. ANY REPRODUCTION IN PART OR AS A WHOLE WITHOUT THE WRITTEN PERMISSION OF C3 POWERSPORTS 2014 LTD IS PROHIBITED.

ITEM NO.	PART NUMBER	DESCRIPTION	QTY.
1	YPAC1242	FREEWHEEL AXLE, MACHINED, IMPERIAL	1
2	YPAC1146	WHEEL, 10 INCH	2
3	YPAC1587	SPACER, FREEWHEEL AXLE	1
4	YPHW1651	BELLEVILLE WASHER 20MMOD X 10.2MM ID X 1.5MM TH	1
5	YPHW1419	BOLT, M10-1.5 X 20MM FLANGE BOLT 10.9 ZINC FOR FREEWHEEL	1
6	YPSU1661	ORING, UPPER SHAFT INNER SEAL	1
7	YPHW1420	STAR GRIP BOLT M10-1.5	1

## FREEWHEEL KIT, YETI

**C3 POWERSPORTS 2014 LTD**

#1 - 17 RENAULT CRESENT,  
ST. ALBERT, AB. T8N 4B7

PH 780 419-2040 888 267-5554 www.c3powersports.com

**PROPRIETARY AND CONFIDENTIAL**

THE INFORMATION CONTAINED IN THIS DRAWING IS THE SOLE PROPERTY OF C3 POWERSPORTS 2014 LTD. ANY REPRODUCTION IN PART OR AS A WHOLE WITHOUT THE WRITTEN PERMISSION OF C3 POWERSPORTS 2014 LTD IS PROHIBITED.



DWG. NO.

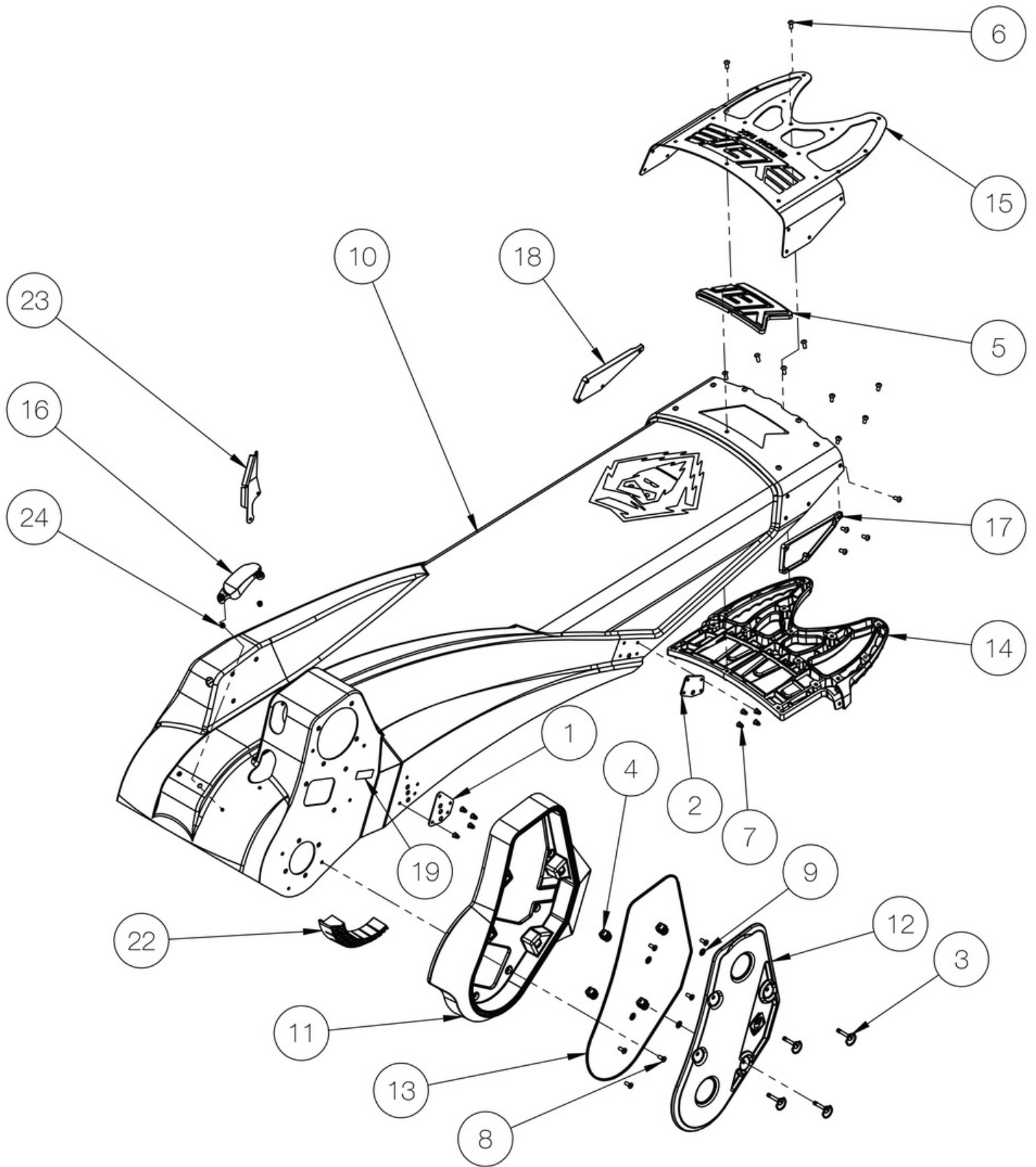
REV.

YAAC1281 D1

DATE

AUG 28-2015

WEIGHT:



## 2016 CHASSIS ASSEMBLY, 12.5 WIDE, 129 INCH

C3 POWERSPORTS 2014 LTD

#1 - 17 RENAULT CRESENT,  
ST. ALBERT, AB. T8N 4B7

PH 780 419-2040 888 267-5554 www.c3powersports.com

PROPRIETARY AND CONFIDENTIAL

THE INFORMATION CONTAINED IN THIS DRAWING IS THE SOLE PROPERTY OF C3 POWERSPORTS 2014 LTD. ANY REPRODUCTION IN PART OR AS A WHOLE WITHOUT THE WRITTEN PERMISSION OF C3 POWERSPORTS 2014 LTD IS PROHIBITED.



DWG. NO.

YACH1100 D11

REV.

DATE

AUG 28-2015

WEIGHT: 17.518



ITEM NO.	PART NUMBER	DESCRIPTION	QTY.
1	YPCH1577	SUSPENSION MOUNT PLATE, FRONT, 3 HOLE	2
2	YPCH1123	SUSPENSION MOUNT PLATE, REAR, 2016	2
3	YPHW1338	DZUS, 1/4 TURN FASTENER, 26MM	4
4	YPHW1348	RECEPTICLE, 1/4 TURN, DZUS	4
5	YPCH1179	BUMPER, YETI SILICONE INSERT, BLACK	1
6	YPHW1573	BOLT, M5-0.8 X 12MM BUTTON HEAD SOCKET CAP A4 S/S	24
7	YPHW1305	RIVIT, 3/16 S/S GRIP RANGE .138-.236"	16
8	YPHW1616	BOLT, M5-.8 X 12mm, FLAT HEAD, 3mm HEX DRIVE	6
9	YPHW1586	1/4 TURN FASTENER PUSH ON RETAINER S/S	4
10	YPCH1101	2016 CHASSIS, 12.5 WIDE, 129 INCH	1
11	YPCH1106	DEFECTOR, SyncroDrive	1
12	YPCH1107	BELT COVER, LEXAN	1
13	YPCH1312	SEAL, DEFLECTOR COVER, 42" LONG - 3/32" DIAMETER	1
14	YPCH1176	BUMPER, MOLDED HANDLE	1
15	YPCH1175	BUMPER, FORMED ALUMINUM, .080"	1
16	YPCH1578	CHAIN SLIDER, CHASSIS	1
17	YPCH1612	NUT PLATE, BUMPER, LH	1
18	YPCH1613	NUT PLATE, BUMPER, RH	1
19	YPCH1643	DECAL, SyncroDrive DEFLECTION INSTRUCTIONS	1
20	YPCH1645	DECAL, ICON 129" TUNNEL GRAPHIC, RH	1
21	YPCH1644	DECAL, ICON 129" TUNNEL GRAPHIC, LH	1
22	YPCH1618	DEFLECTOR DAMPNER, SILICONE	1
23	YPCH1159	BRAKE LINE PROTECTOR	1
24	YPCH1598	THREADED INSERT, M5 X 9.4MM STL PLATED ZINC	2

## 2016 CHASSIS ASSEMBLY, 12.5 WIDE, 129 INCH

C3 POWERSPORTS 2014 LTD

#1 - 17 RENAULT CRESENT,  
ST. ALBERT, AB. T8N 4B7

PH 780 419-2040 888 267-5554 www.c3powersports.com

PROPRIETARY AND CONFIDENTIAL

THE INFORMATION CONTAINED IN THIS DRAWING IS THE SOLE PROPERTY OF C3 POWERSPORTS 2014 LTD. ANY REPRODUCTION IN PART OR AS A WHOLE WITHOUT THE WRITTEN PERMISSION OF C3 POWERSPORTS 2014 LTD IS PROHIBITED.



DWG. NO.

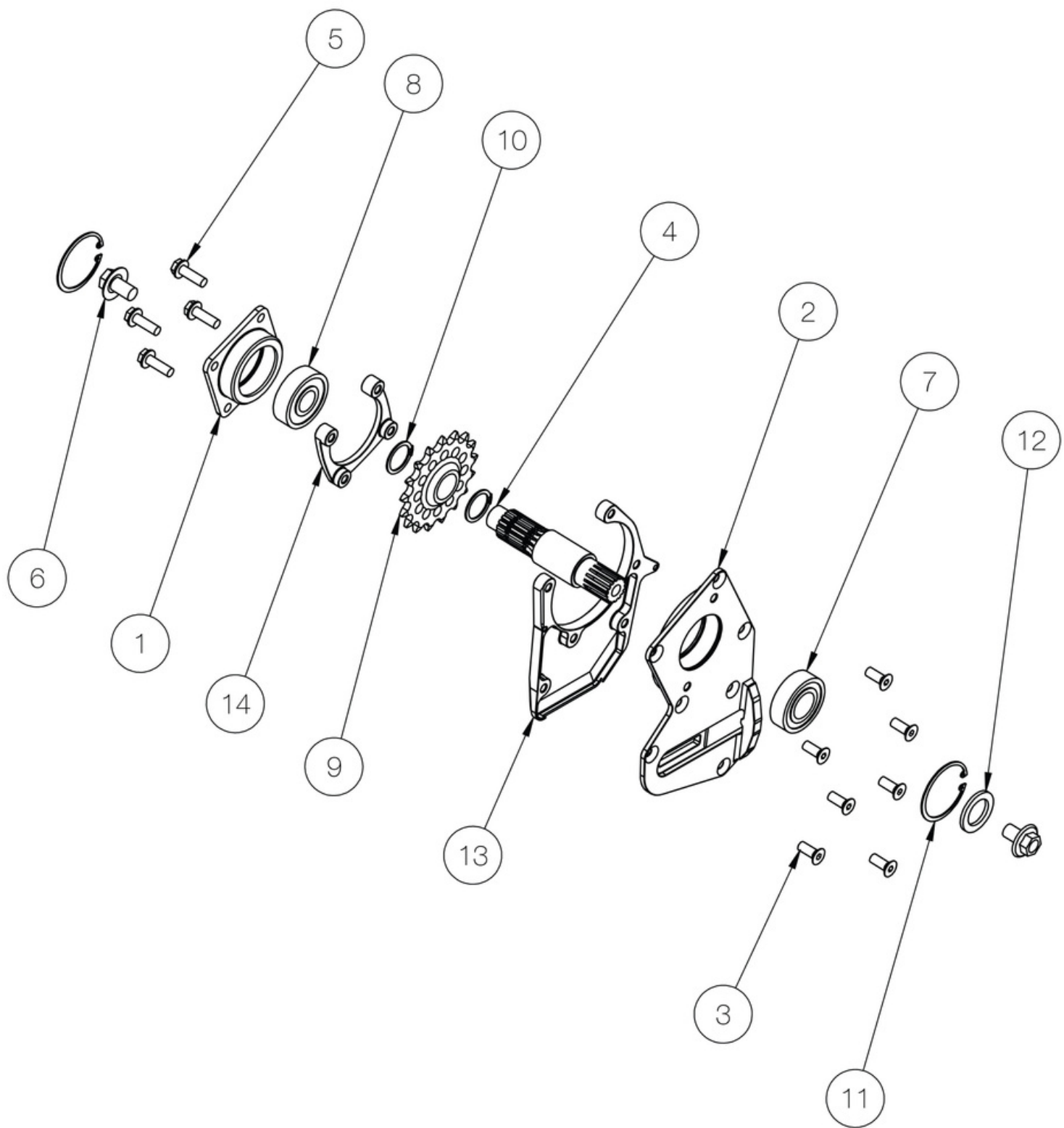
REV.

YACH1100 D11

DATE

AUG 28-2015

WEIGHT: 17.518



## 2016 JACK SHAFT ASSEMBLY

C3 POWERSPORTS 2014 LTD

#1 - 17 RENAULT CRESENT,  
ST. ALBERT, AB. T8N 4B7

PH 780 419-2040 888 267-5554 www.c3powersports.com

PROPRIETARY AND CONFIDENTIAL

THE INFORMATION CONTAINED IN THIS DRAWING IS THE SOLE PROPERTY OF C3 POWERSPORTS 2014 LTD. ANY REPRODUCTION IN PART OR AS A WHOLE WITHOUT THE WRITTEN PERMISSION OF C3 POWERSPORTS 2014 LTD IS PROHIBITED.



DWG. NO.

REV.

YADR1045 D10

DATE

AUG 28-2015

WEIGHT: 3.672

ITEM NO.	PART NUMBER	DESCRIPTION	QTY.
1	YPDR1050	BEARING HOLDER, JACK SHAFT	1
2	YPDR1051	BEARING HOLDER, JACK SHAFT, DRIVE PLATE WITH TENSIONER SLOT	1
3	YPHW1048	BOLT, M8-1.25 X 20mm FLAT HEAD 5mm SOCKET DRIVE, Ti	7
4	YPDR1053	JACK SHAFT, SPLINED TWO ENDS	1
5	YPHW1004	BOLT, M8-1.25 X 25mm, FLANGE HEAD 12mm HEX DRIVE, Ti	4
6	YPHW1034	BOLT, M12-1.25 X 20mm FLANGE HEAD SPRING 17mm HEX DRIVE Ti	2
7	YPDR1260	BEARING, 6205, 25MM X 52MM X 15MM	1
8	YPDR1259	BEARING, 6304, 20MM X 52MM X 15MM	1
9	YPDR1117	CHAIN SPROCKET, 17 TOOTH, 28mm X 17 SPLINE	1
10	YPHW1342	RING, EXTERNAL SNAP, 1-1/16"	2
11	YPHW1282	RING, INTERNAL SNAP, 2.00"	2
12	YPHW1057	WASHER, SHAFT GEAR SPACER, 1.5OD X 1ID X .125"TH	1
13	YPDR1224	NUT PLATE, DRIVE PLATE	1
14	YPDR1226	NUT PLATE, TUNNEL PLATE, LH	1

## 2016 JACK SHAFT ASSEMBLY

C3 POWERSPORTS 2014 LTD

#1 - 17 RENAULT CRESENT,  
ST. ALBERT, AB. T8N 4B7

PH 780 419-2040 888 267-5554 www.c3powersports.com

PROPRIETARY AND CONFIDENTIAL

THE INFORMATION CONTAINED IN THIS DRAWING IS THE SOLE PROPERTY OF C3 POWERSPORTS 2014 LTD. ANY REPRODUCTION IN PART OR AS A WHOLE WITHOUT THE WRITTEN PERMISSION OF C3 POWERSPORTS 2014 LTD IS PROHIBITED.



DWG. NO.

REV.

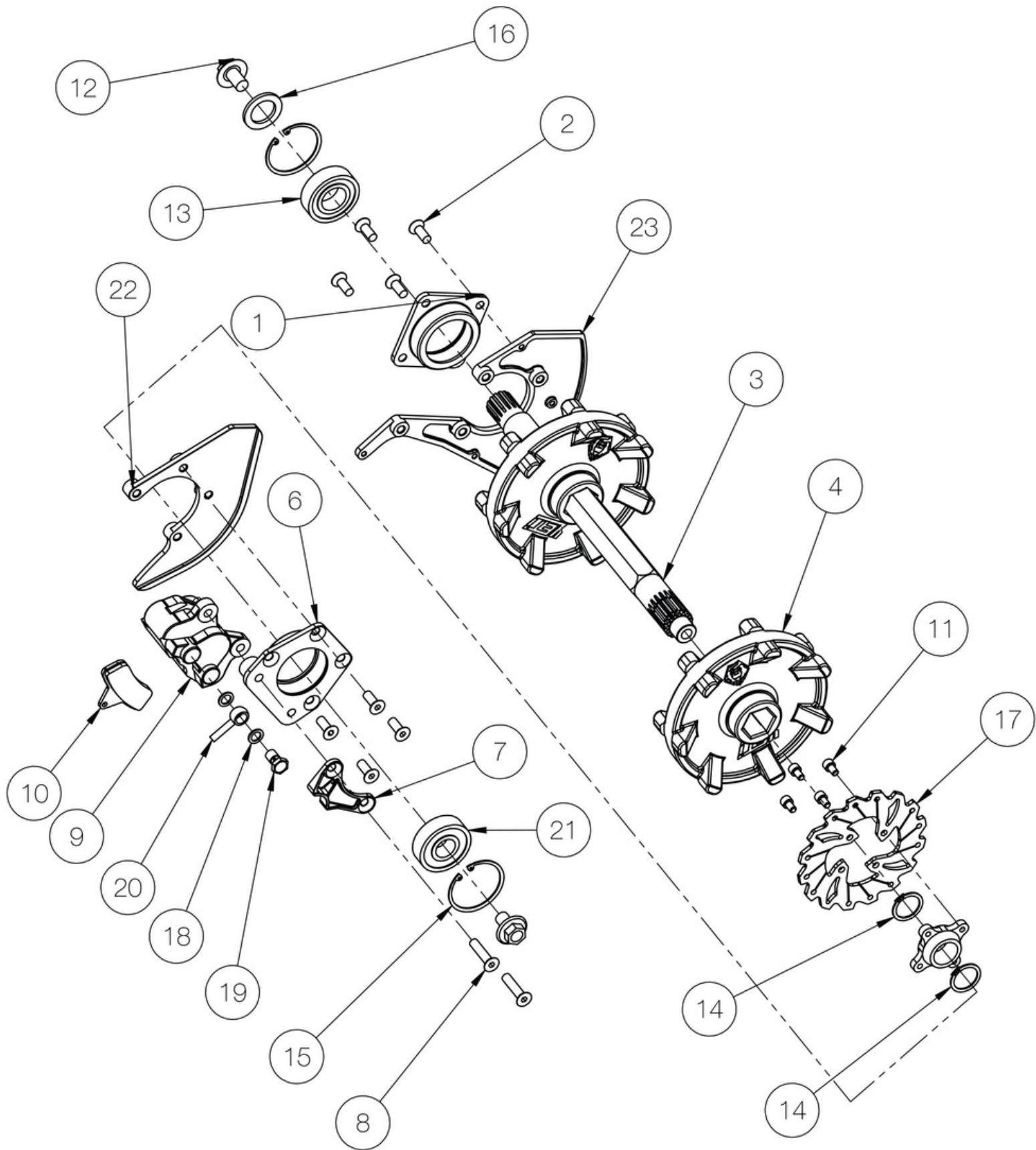
YADR1045 D10

DATE

AUG 28-2015

WEIGHT: 3.672





## 2016 DRIVE SHAFT ASSEMBLY

C3 POWERSPORTS 2014 LTD

#1 - 17 RENAULT CRESENT,  
ST. ALBERT, AB. T8N 4B7

PH 780 419-2040 888 267-5554 www.c3powersports.com

PROPRIETARY AND CONFIDENTIAL

THE INFORMATION CONTAINED IN THIS DRAWING IS THE SOLE PROPERTY OF C3 POWERSPORTS 2014 LTD. ANY REPRODUCTION IN PART OR AS A WHOLE WITHOUT THE WRITTEN PERMISSION OF C3 POWERSPORTS 2014 LTD IS PROHIBITED.



DWG. NO.

YADR1046 D9

REV.

DATE

AUG 28-2015

WEIGHT: 7.632



ITEM NO.	PART NUMBER	DESCRIPTION	QTY.
1	YPDR1049	BEARING HOLDER, DRIVE SHAFT, LH	1
2	YPHW1048	BOLT, M8-1.25 X 20mm FLAT HEAD 5mm SOCKET DRIVE, Ti	8
3	YPDR1054	DRIVE SHAFT, 1 1/8" HEX, SPLINED TWO ENDS	1
4	YPDR1044	DRIVER, Yeti 7 Tooth 2.86 Pitch Involute	2
5	YPDR1042	BRAKE ROTOR HUB ADAPTER	1
6	YPDR1040	BEARING AND BRAKE HOLDER WITH PS-1 BRAKE MOUNT	1
7	YPDR1055	BRAKE DEFLECTOR	1
8	YPHW1036	BOLT, M8-1.25 X 35 mm FLAT HEAD 5mm SOCKET DRIVE, Ti	2
9	YPDR1211	CALIPER, BRAKE, PS1	1
10	YPDR1212	PAD, BRAKE, PS-1	2
11	YPHW1018	BOLT, M6-1.0 X 10mm, SOCKET HEAD 5mm DRIVE, Ti	4
12	YPHW1034	BOLT, M12-1.25 X 20mm FLANGE HEAD SPRING 17mm HEX DRIVE Ti	2
13	YPDR1260	BEARING, 6205, 25MM X 52MM X 15MM	1
14	YPHW1342	RING, EXTERNAL SNAP, 1-1/16"	2
15	YPHW1282	RING, INTERNAL SNAP, 2.00"	2
16	YPHW1057	WASHER, SHAFT GEAR SPACER, 1.5OD X 1ID X .125"TH	1
17	YPDR1056	YETI BRAKE ROTOR	1
18	YPDR1564	WASHER, BRAKE, COPPER	2
19	YPDR1565	BOLT, BRAKE, M10-1.125, BANJO	1
20	YPDR1349	80" Brake line - H692/0/H693 - Black line	1
21	YPDR1259	BEARING, 6304, 20MM X 52MM X 15MM	1
22	YPDR1227	NUT PLATE, BRAKE	1
23	YPDR1225	NUT PLATE, DRIVE SHAFT	1

## 2016 DRIVE SHAFT ASSEMBLY

C3 POWERSPORTS 2014 LTD

#1 - 17 RENAULT CRESENT,  
ST. ALBERT, AB. T8N 4B7

PH 780 419-2040 888 267-5554 www.c3powersports.com

PROPRIETARY AND CONFIDENTIAL

THE INFORMATION CONTAINED IN THIS DRAWING IS THE SOLE PROPERTY OF C3 POWERSPORTS 2014 LTD. ANY REPRODUCTION IN PART OR AS A WHOLE WITHOUT THE WRITTEN PERMISSION OF C3 POWERSPORTS 2014 LTD IS PROHIBITED.



DWG. NO.

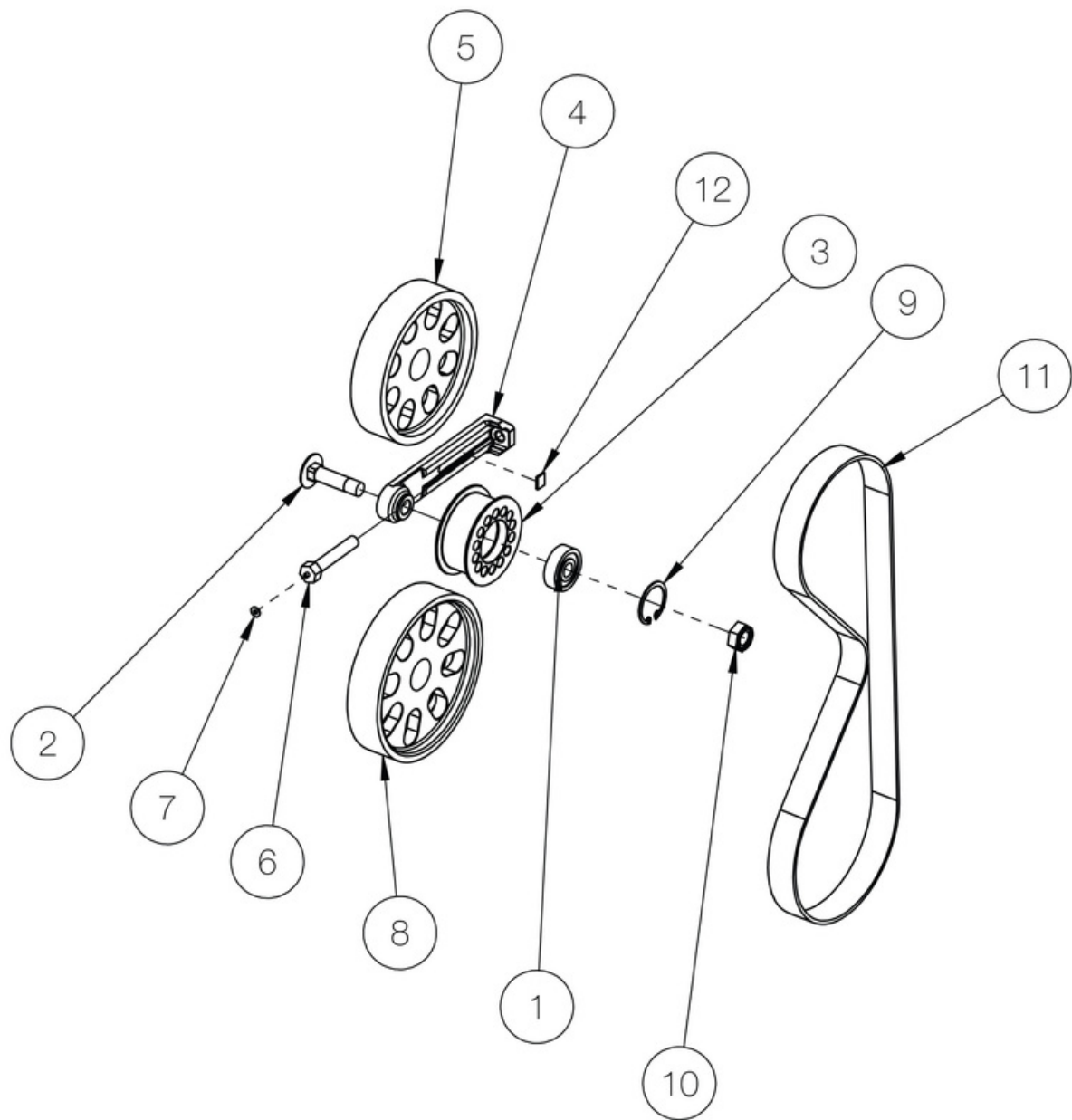
REV.

YADR1046 D9

DATE

AUG 28-2015

WEIGHT: 7.632



## 2015 SyncroDrive ASSEMBLY

C3 POWERSPORTS 2014 LTD

#1 - 17 RENAULT CRESENT,  
ST. ALBERT, AB. T8N 4B7

PH 780 419-2040 888 267-5554 www.c3powersports.com

PROPRIETARY AND CONFIDENTIAL

THE INFORMATION CONTAINED IN THIS DRAWING IS THE SOLE PROPERTY OF C3 POWERSPORTS 2014 LTD. ANY REPRODUCTION IN PART OR AS A WHOLE WITHOUT THE WRITTEN PERMISSION OF C3 POWERSPORTS 2014 LTD IS PROHIBITED.



DWG. NO.

YADR1047 D9

REV.

DATE

AUG 28-2015

WEIGHT: 1.945

ITEM NO.	PART NUMBER	DESCRIPTION	QTY.
1	YPDR1566	BEARING, 6200, 30MM OD X 10MM ID X 9MM WIDE	1
2	YPHW1591	BOLT, M10-1.25 x 45mm Carriage Bolt, Ti	1
3	YPDR1449	2" IDLER WHEEL FLANGED, BEARING CENTERED	1
4	YPDR1319	BELT TENSIONER, 21mm WHEEL, BEARING CENTERED	1
5	YPDR1343	GEAR, 43 TOOTH, 25MM WIDE	1
6	YPHW1043	BOLT, M8-1.25 X 45mm, HEX HEAD 12mm HEX DRIVE, Ti	1
7	YPHW1230	WASHER, PLASTIC, .120" ID X .290" OD X .030" TH, TENSIONER BOLT HEAD	1
8	YPDR1347	C3 SyncroDrive 8mm P, 25mm W, 44 T	1
9	YPHW1418	RING, INTERNAL SNAP, 1-1/8 ID, FOR TENSIONER WHEEL	1
10	YPHW1059	NUT, M10-1.25, ALL METAL SELF LOCKING	1
11	YPDR1428	BELT, 896MM LONG X 21MM WIDE, MITSUBOSHI GIGA TORQUE	1
12	YPDR1615	BELT DEFLECTION GAUGE	1

## 2015 SyncroDrive ASSEMBLY

**C3 POWERSPORTS 2014 LTD**

#1 - 17 RENAULT CRESENT,  
ST. ALBERT, AB. T8N 4B7

PH 780 419-2040 888 267-5554 [www.c3powersports.com](http://www.c3powersports.com)

**PROPRIETARY AND CONFIDENTIAL**

THE INFORMATION CONTAINED IN THIS DRAWING IS THE SOLE PROPERTY OF C3 POWERSPORTS 2014 LTD. ANY REPRODUCTION IN PART OR AS A WHOLE WITHOUT THE WRITTEN PERMISSION OF C3 POWERSPORTS 2014 LTD IS PROHIBITED.



DWG. NO.

REV.

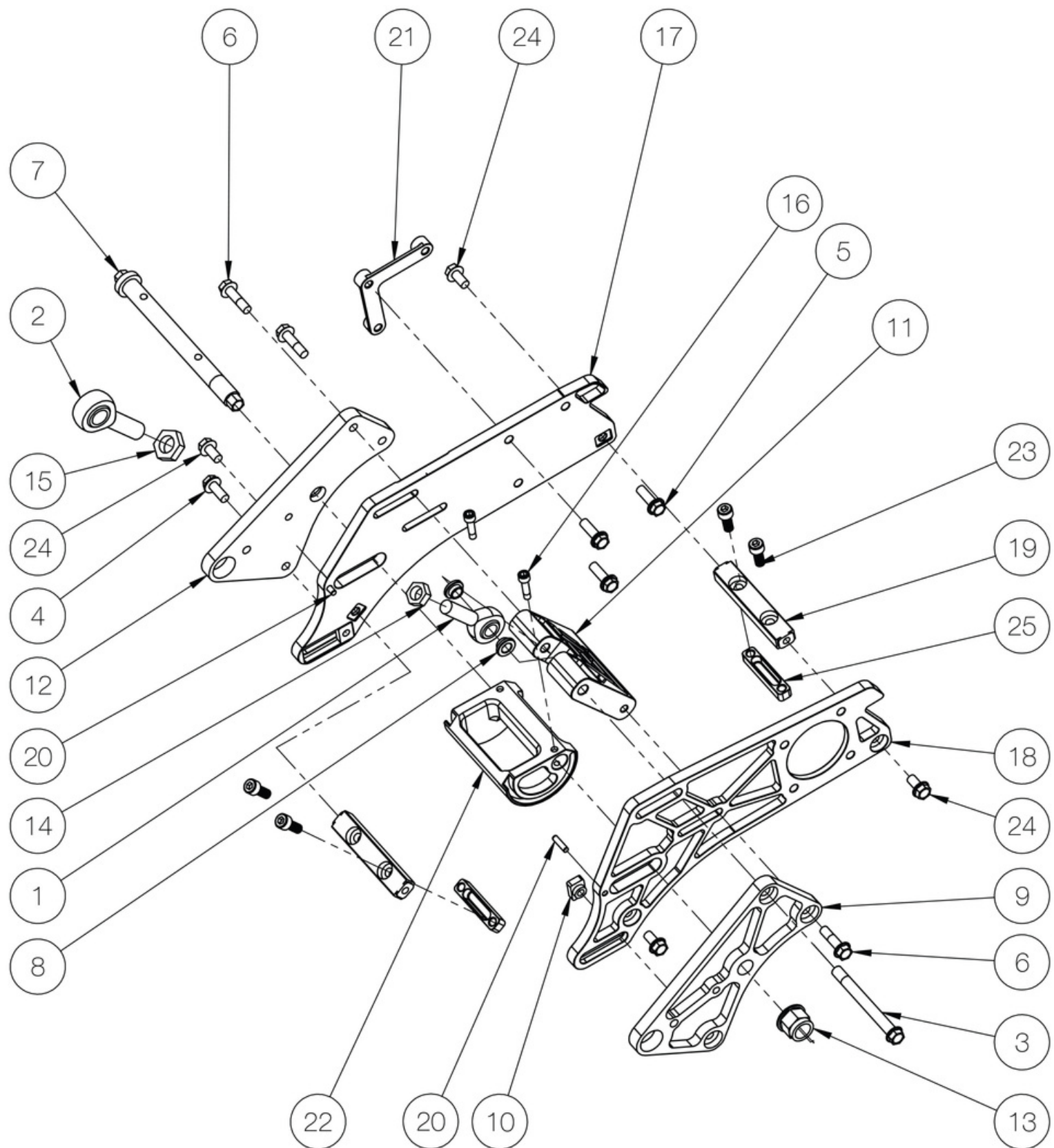
YADR1047 D9

DATE

AUG 28-2015

WEIGHT: 1.945





## 2016 BIKE MOUNT ASSEMBLY

C3 POWERSPORTS 2014 LTD

#1 - 17 RENAULT CRESENT,  
ST. ALBERT, AB. T8N 4B7

PH 780 419-2040 888 267-5554 www.c3powersports.com

PROPRIETARY AND CONFIDENTIAL

THE INFORMATION CONTAINED IN THIS DRAWING IS THE SOLE PROPERTY OF C3 POWERSPORTS 2014 LTD. ANY REPRODUCTION IN PART OR AS A WHOLE WITHOUT THE WRITTEN PERMISSION OF C3 POWERSPORTS 2014 LTD IS PROHIBITED.



DWG. NO.

YABM1110 D11

REV.

DATE

AUG 28-2015

WEIGHT: 5.395



ITEM NO.	PART NUMBER	DESCRIPTION	QTY.
1	YPHW1218	ROD END, LH, 1/2-20, 7075 BLACK ANODIZED	1
2	YPHW1035	BOLT, M10-1.25 x 95 FLANGE HEAD 12mm HEX DRIVE, LOWER ROD END, Ti	1
3	YPHW1001	BOLT, M8-1.25 X 20mm, FLANGE HEAD 12mm HEX DRIVE, Ti	2
4	YPHW1004	BOLT, M8-1.25 X 25mm, FLANGE HEAD 12mm HEX DRIVE, Ti	3
5	YPHW1005	BOLT, M8-1.25 X 30mm, FLANGE HEAD 12mm HEX DRIVE, Ti	3
6	YPHW1221	ROD END, RH, 5/8-18, 7075 BLACK ANODIZED	1
7	YPHW1130	BOLT, ECCENTRIC CAM	1
8	YPBM1134	BUSHING, .5 BALL END TO 10mm BOLT	2
9	YPBM1111	BIKE MOUNT, SIDE PLATE, LH	1
10	YPHW1129	NUT, M8-1.25, T	2
11	YPBM1113	STRUT MOUNT BLOCK	1
12	YPBM1112	BIKE MOUNT, SIDE PLATE, RH	1
13	YPHW1593	NUT, M16-2.0, 28.5mm DIA FLANGE, NYLOCK	1
14	YPHW1061	NUT, 1/2-20, LH, LOCK	1
15	YPHW1062	NUT, 5/8-18, RH, LOCK	1
16	YPHW1012	BOLT, M6-1.0 X 25mm, SOCKET HEAD 5mm DRIVE, Ti	2
17	YPBM1103	TUNNEL SIDE PLATE, RH	1
18	YPBM1102	TUNNEL SIDE PLATE, LH	1
19	YPHW1262	Dowel Pin .1875 Dia x .75 Long	2
20	YPHW1009	BOLT, M8-1.25 X 20mm, SOCKET HEAD 6mm DRIVE, Ti	4
21	YPHW1003	BOLT, M8-1.25 X 16mm, FLANGE HEAD 12mm HEX DRIVE, Ti	4
22	YPCH1108	CROSS BAR, TUNNEL SIDE PLATE	2
23	YPDR1228	NUT PLATE, TUNNEL PLATE, RH	1
24	YPBM1137	ECCENTRIC CAM	1
25	YPCH1614	NUT PLATE, CROSS BAR	2

FOR BIKE SPECIFIC PARTS,  
(2) BIKE MOUNT ADAPTERS, STRUT ROD, (2) ROD END BUSHINGS AND OTHER  
PARTS SEE THE BIKE ADAPTER ASSEMBLY.

## 2016 BIKE MOUNT ASSEMBLY

C3 POWERSPORTS 2014 LTD

#1 - 17 RENAULT CRESENT,  
ST. ALBERT, AB. T8N 4B7

PH 780 419-2040 888 267-5554 www.c3powersports.com

PROPRIETARY AND CONFIDENTIAL

THE INFORMATION CONTAINED IN THIS DRAWING IS THE SOLE PROPERTY OF C3  
POWERSPORTS 2014 LTD. ANY REPRODUCTION IN PART OR AS A WHOLE WITHOUT THE  
WRITTEN PERMISSION OF C3 POWERSPORTS 2014 LTD IS PROHIBITED.



DWG. NO.

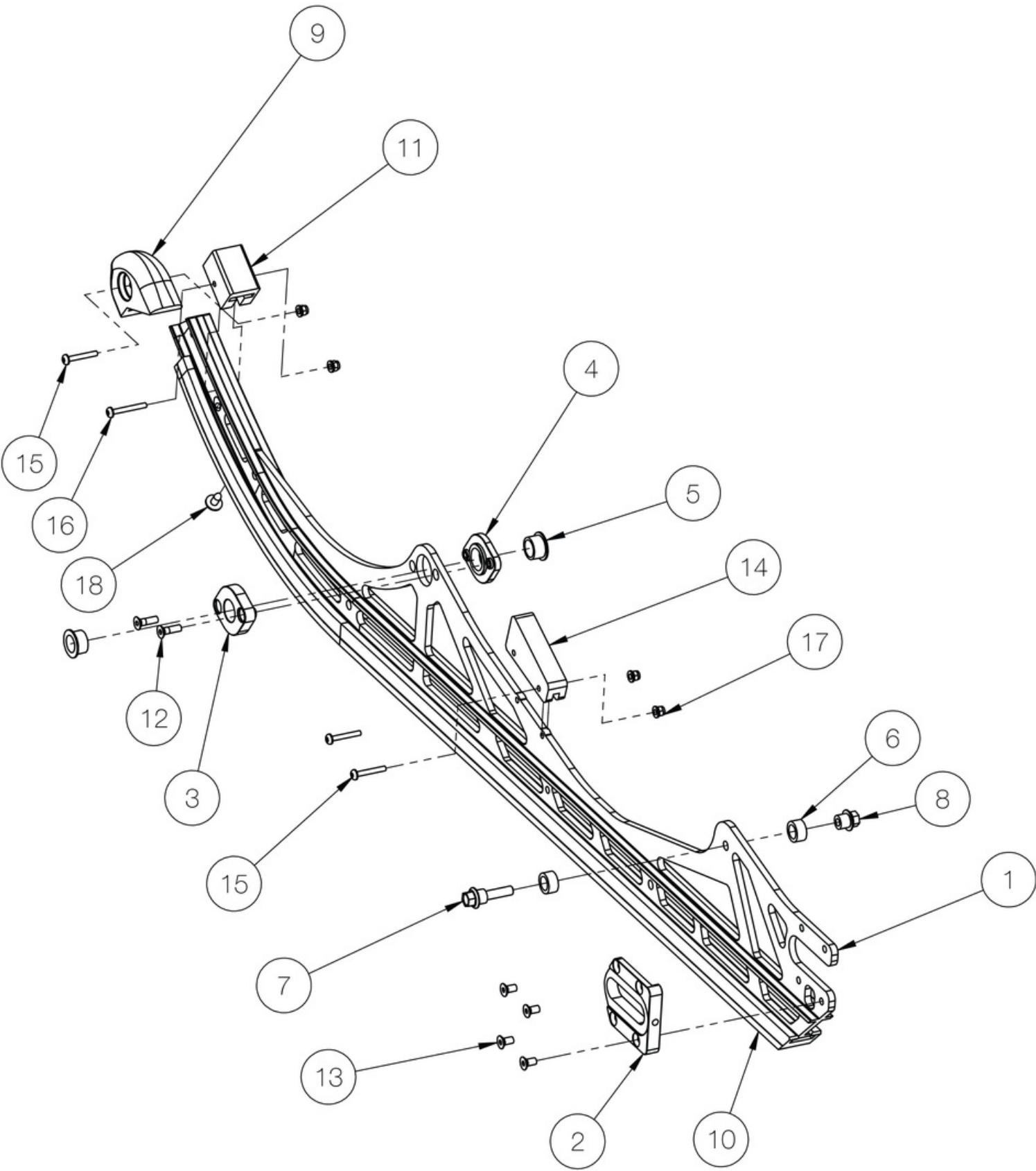
REV.

YABM1110 D11

DATE

AUG 28-2015

WEIGHT: 5.395



SLR SUSPENSION, 129 INCH RAIL, LH, RH

C3 POWERSPORTS 2014 LTD  
 #1 - 17 RENAULT CRESENT,  
 ST. ALBERT, AB. T8N 4B7  
 PH 780 419-2040 888 267-5554 www.c3powersports.com

PROPRIETARY AND CONFIDENTIAL  
 THE INFORMATION CONTAINED IN THIS DRAWING IS THE SOLE PROPERTY OF C3  
 POWERSPORTS 2014 LTD. ANY REPRODUCTION IN PART OR AS A WHOLE WITHOUT THE  
 WRITTEN PERMISSION OF C3 POWERSPORTS 2014 LTD IS PROHIBITED.



DWG. NO.	REV.
YASU1638 D1	
DATE	WEIGHT: 5.670
AUG 28-2015	

ITEM NO.	PART NUMBER	DESCRIPTION	QTY.
1	YPSU1268	RAIL, 129" ALUMINUM, 1.0	1
2	YPSU1258	PLATE, RAIL, REAR AXLE OUTER	1
3	YPSU1247	MOUNT, RAIL, FRONT ARM OUTER	1
4	YPSU1246	MOUNT, RAIL, FRONT ARM INNER	1
5	YPSU1370	FRONT ARM LOWER NYLON BUSHING (IN RAIL)	2
6	YPSU1391	SL2 REACTOR TRANSFER ADJUSTER STYLE 3	2
7	YPSU1392	REACTOR LOWER OUTER BOLT (CUSTOM TITANIUM)	1
8	YPSU1393	REACTOR LOWER INNER NUT (CUSTOM TITANIUM)	1
9	YPSU1582	RAIL TIP	1
10	YPSU1585	SLIDER, 120" RAIL, GRAPHITE, 41.75" LONG	1
11	YPSU1583	BUMPER, RAIL FRONT ARM	1
12	YPHW1592	BOLT, M6-1.00 x 20mm FHSD, Ti	2
13	YPHW1589	BOLT, M6-1.00 x 12mm FHSD, Ti	4
14	YPSU1274	BUMPER, REAR ARM, M10 STYLE	1
15	YPHW1596	SCREW, M5-.8 X 30mm, BUTTON HEAD SOCKET CAP	3
16	YPHW1617	SCREW, M5-.8 X 35mm, BUTTON HEAD SOCKET CAP	1
17	YPHW1597	NUT, M5-.8, FLANGE NYLOCK, ZP	4
18	YPHW1254	SCREW, M6.3-1.81 X 16MM, PHILLIPS	1

## SLR SUSPENSION, 129 INCH RAIL, LH, RH

C3 POWERSPORTS 2014 LTD

#1 - 17 RENAULT CRESENT,  
ST. ALBERT, AB. T8N 4B7

PH 780 419-2040 888 267-5554 www.c3powersports.com

PROPRIETARY AND CONFIDENTIAL

THE INFORMATION CONTAINED IN THIS DRAWING IS THE SOLE PROPERTY OF C3 POWERSPORTS 2014 LTD. ANY REPRODUCTION IN PART OR AS A WHOLE WITHOUT THE WRITTEN PERMISSION OF C3 POWERSPORTS 2014 LTD IS PROHIBITED.



DWG. NO.

REV.

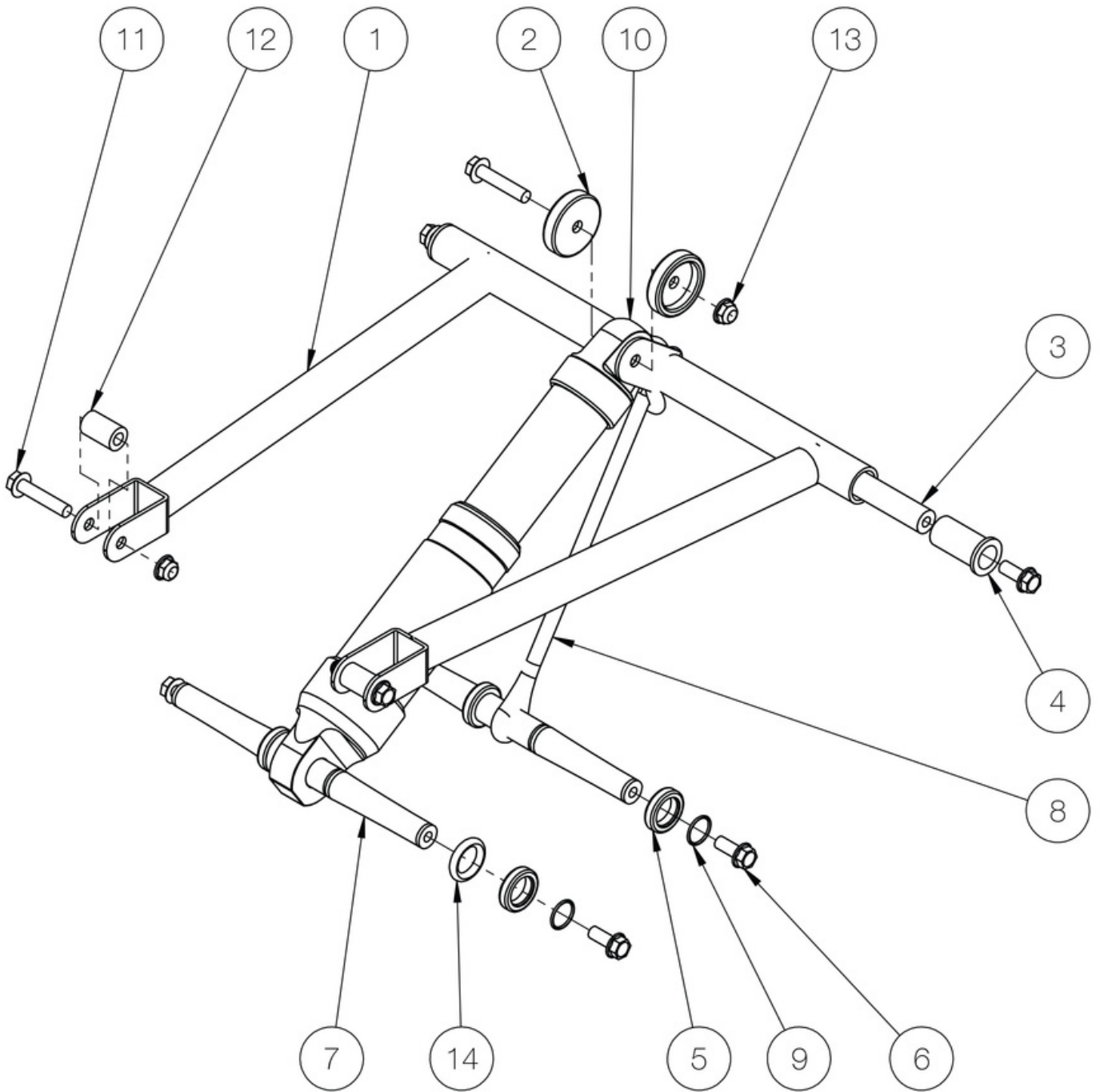
YASU1638 D1

DATE

AUG 28-2015

WEIGHT: 5.670





## SLR SUSPENSION, FRONT ARM ASSEMBLY

C3 POWERSPORTS 2014 LTD

#1 - 17 RENAULT CRESENT,  
ST. ALBERT, AB. T8N 4B7

PH 780 419-2040 888 267-5554 - www.c3powersports.com

PROPRIETARY AND CONFIDENTIAL

THE INFORMATION CONTAINED IN THIS DRAWING IS THE SOLE PROPERTY OF C3  
POWERSPORTS 2014 LTD. ANY REPRODUCTION IN PART OR AS A WHOLE WITHOUT THE  
WRITTEN PERMISSION OF C3 POWERSPORTS 2014 LTD IS PROHIBITED.



DWG. NO.

REV.

YASU1636 D1

DATE

AUG 28-2015

WEIGHT: 5.029



ITEM NO.	PART NUMBER	DESCRIPTION	QTY.
1	YPSU1368	FRONT ARM TITANIUM WELDED GR 9	1
2	YPSU1375	UPPER FRONT ARM RUB PROTECTOR GF NYLON	2
3	YPSU1372	FRONT ARM ALUMINUM UPPER SHAFT	1
4	YPSU1369	FRONT ARM UPPER NYLON BUSHING	2
5	YPSU1396	SL2 CROSS SHAFT FIBER PA RETAINER FOR 314 O RING	4
6	YPHW1001	BOLT, M8-1.25 X 20mm, FLANGE HEAD 12mm HEX DRIVE, Ti	6
7	YPSU1395	ALUMINUM CROSS TIES/SHOCK LOWER MOUNT	2
8	YPSU1407	LIMITER STRAP	1
9	YPSU1397	STAINLESS WIRE SNAP RING 1000-75	4
10	YPSU1414	SHOCK, FRONT SKID FLOAT 3, SOFT 951-99-122	1
11	YPHW1010	BOLT, M8-1.25 X 40mm, FLANGE HEAD 12mm HEX DRIVE, Ti	3
12	YPSU1371	PIN, FRONT ARM LOWER, 7075 HARD ANODIZED	2
13	YPHW1377	NUT, M8-1.25, NYLOCK, TI	3
14	YPSU1385	ORING, UPPER SHAFT OUTER & MID SEAL	2

## SLR SUSPENSION, FRONT ARM ASSEMBLY

C3 POWERSPORTS 2014 LTD

#1 - 17 RENAULT CRESENT,  
ST. ALBERT, AB. T8N 4B7

PH 780 419-2040 888 267-5554 www.c3powersports.com

PROPRIETARY AND CONFIDENTIAL

THE INFORMATION CONTAINED IN THIS DRAWING IS THE SOLE PROPERTY OF C3 POWERSPORTS 2014 LTD. ANY REPRODUCTION IN PART OR AS A WHOLE WITHOUT THE WRITTEN PERMISSION OF C3 POWERSPORTS 2014 LTD IS PROHIBITED.



DWG. NO.

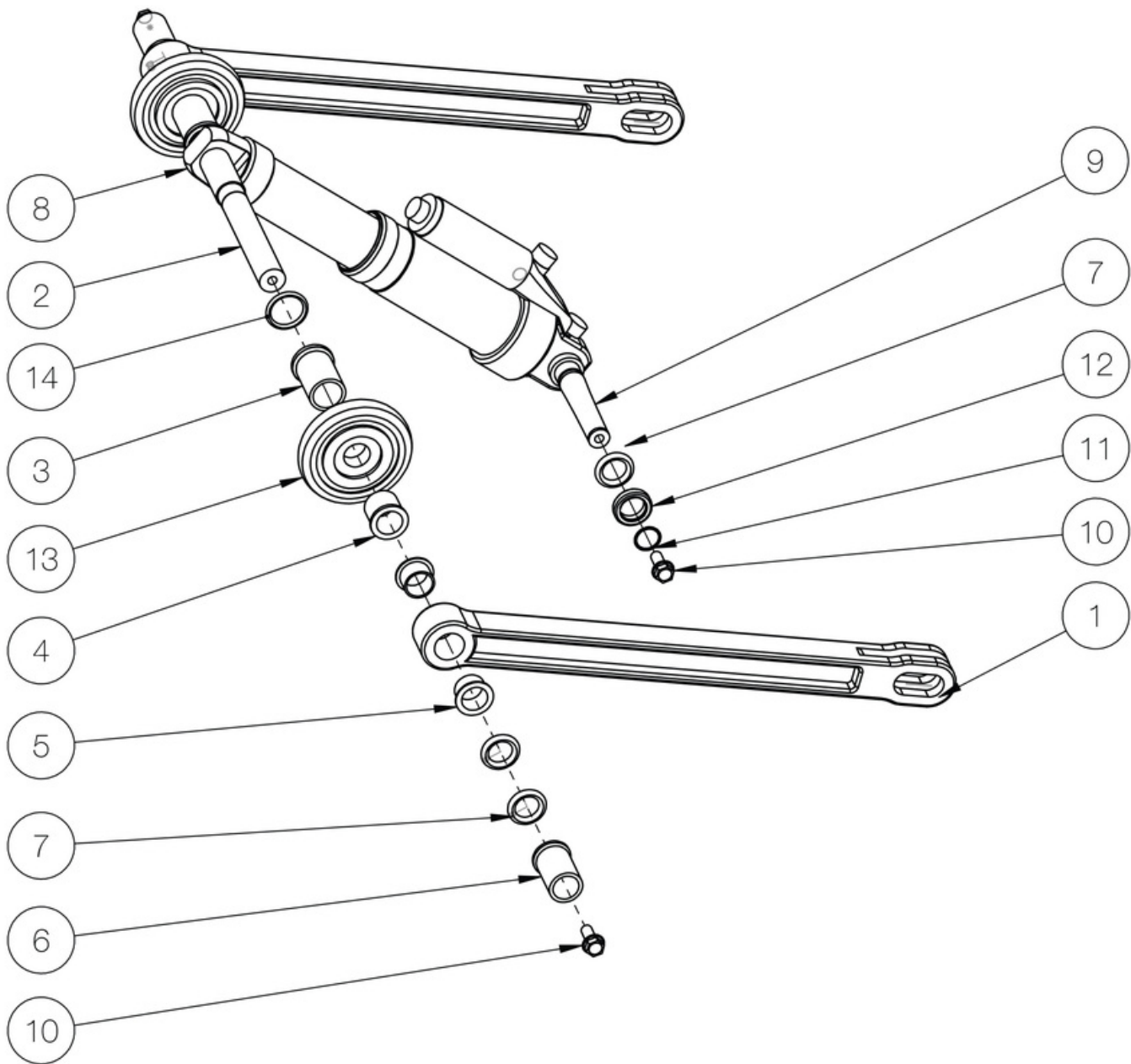
REV.

YASU1636 D1

DATE

AUG 28-2015

WEIGHT: 5.029



## SLR SUSPENSION, REAR ARM ASSEMBLY

C3 POWERSPORTS 2014 LTD

#1 - 17 RENAULT CRESENT,  
ST. ALBERT, AB. T8N 4B7

PH 780 419-2040 888 267-5554 www.c3powersports.com

PROPRIETARY AND CONFIDENTIAL

THE INFORMATION CONTAINED IN THIS DRAWING IS THE SOLE PROPERTY OF C3  
POWERSPORTS 2014 LTD. ANY REPRODUCTION IN PART OR AS A WHOLE WITHOUT THE  
WRITTEN PERMISSION OF C3 POWERSPORTS 2014 LTD IS PROHIBITED.



DWG. NO.

REV.

YASU1637 D1

DATE

AUG 28-2015

WEIGHT: 3.220

ITEM NO.	PART NUMBER	DESCRIPTION	QTY.
1	YPSU1388	REACTOR BAR	2
2	YPSU1379	SHAFT, REAR UPPER, 7075	1
3	YPSU1381	SPACER, REAR UPPER SHAFT INNER, PLASTIC	2
4	YPSU1382	SPACER, REAR UPPER SHAFT MIDDLE, PLASTIC	2
5	YPSU1387	BUSHING, UPPER SHAFT REACTOR, NYLON	4
6	YPSU1383	SPACER, REAR UPPER SHAFT OUTER, PLASTIC	2
7	YPSU1385	ORING, UPPER SHAFT OUTER & MID SEAL	6
8	YPSU1417	SHOCK, REAR SKID FLOAT 3 EVOL, SOFT, 952-99-126	1
9	YPSU1395	ALUMINUM CROSS TIES/SHOCK LOWER MOUNT	1
10	YPHW1001	BOLT, M8-1.25 X 20mm, FLANGE HEAD 12mm HEX DRIVE, Ti	4
11	YPSU1397	STAINLESS WIRE SNAP RING 1000-75	2
12	YPSU1396	SL2 CROSS SHAFT FIBER PA RETAINER FOR 314 O RING	2
13	YPSU1217	WHEEL, 3.35" OD, 20MM ID BEARING	2
14	YPSU1384	ORING, UPPER SHAFT INNER SEAL	2

## SLR SUSPENSION, REAR ARM ASSEMBLY

C3 POWERSPORTS 2014 LTD

#1 - 17 RENAULT CRESENT,  
ST. ALBERT, AB. T8N 4B7

PH 780 419-2040 888 267-5554 www.c3powersports.com

PROPRIETARY AND CONFIDENTIAL

THE INFORMATION CONTAINED IN THIS DRAWING IS THE SOLE PROPERTY OF C3 POWERSPORTS 2014 LTD. ANY REPRODUCTION IN PART OR AS A WHOLE WITHOUT THE WRITTEN PERMISSION OF C3 POWERSPORTS 2014 LTD IS PROHIBITED.



DWG. NO.

REV.

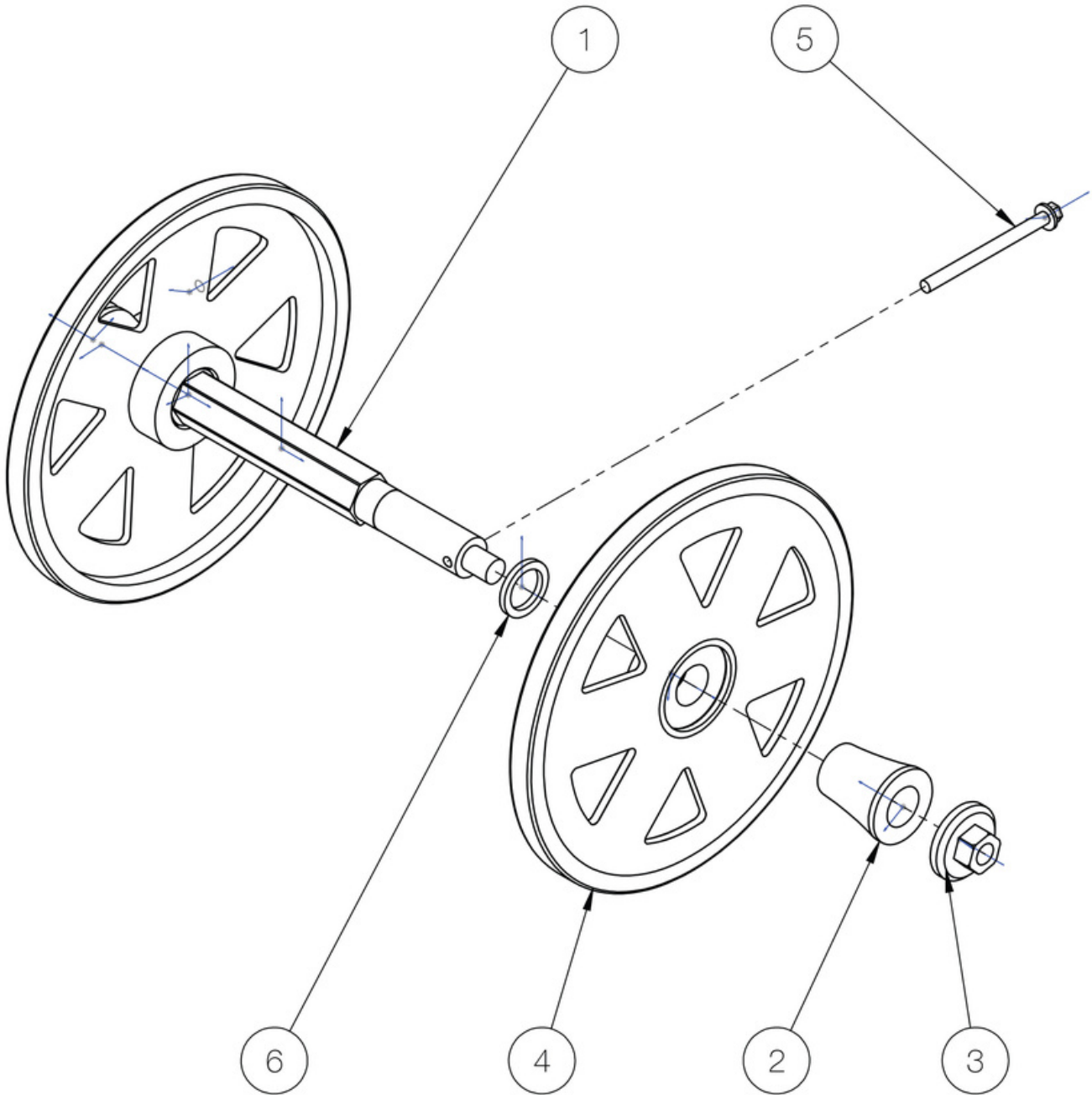
YASU1637 D1

DATE

AUG 28-2015

WEIGHT: 3.220





## SLR SUSPENSION, AXLE ASSEMBLY

C3 POWERSPORTS 2014 LTD

#1 - 17 RENAULT CRESENT,  
ST. ALBERT, AB. T8N 4B7

PH 780 419-2040 888 267-5554 www.c3powersports.com

PROPRIETARY AND CONFIDENTIAL

THE INFORMATION CONTAINED IN THIS DRAWING IS THE SOLE PROPERTY OF C3 POWERSPORTS 2014 LTD. ANY REPRODUCTION IN PART OR AS A WHOLE WITHOUT THE WRITTEN PERMISSION OF C3 POWERSPORTS 2014 LTD IS PROHIBITED.



DWG. NO.

REV.

YASU1639 D1

DATE

AUG 28-2015

WEIGHT: 1.166

ITEM NO.	PART NUMBER	DESCRIPTION	QTY.
1	YPSU1360	REAR AXLE CENTER 6061 ALUMINUM	1
2	YPSU1362	REAR AXLE FIBER REINFORCED PA COLLAR	2
3	YPSU1361	REAR AXLE OUTER NUT (ALUMINUM) 17MM HEAD	2
4	YPSU1365	REAR WHEEL 8" PLASTIC W/BEARING	2
5	YPHW1640	BOLT, M6-1.0 X 75MM,B1 FHCS, 8MM HEX, TI	2
6	YPSU1367	AXLE 3MM SPACER AL	2

## SLR SUSPENSION, AXLE ASSEMBLY

C3 POWERSPORTS 2014 LTD

#1 - 17 RENAULT CRESENT,  
ST. ALBERT, AB. T8N 4B7

PH 780 419-2040 888 267-5554 www.c3powersports.com

PROPRIETARY AND CONFIDENTIAL

THE INFORMATION CONTAINED IN THIS DRAWING IS THE SOLE PROPERTY OF C3 POWERSPORTS 2014 LTD. ANY REPRODUCTION IN PART OR AS A WHOLE WITHOUT THE WRITTEN PERMISSION OF C3 POWERSPORTS 2014 LTD IS PROHIBITED.



DWG. NO.

REV.

YASU1639 D1

DATE

AUG 28-2015

WEIGHT: 1.166