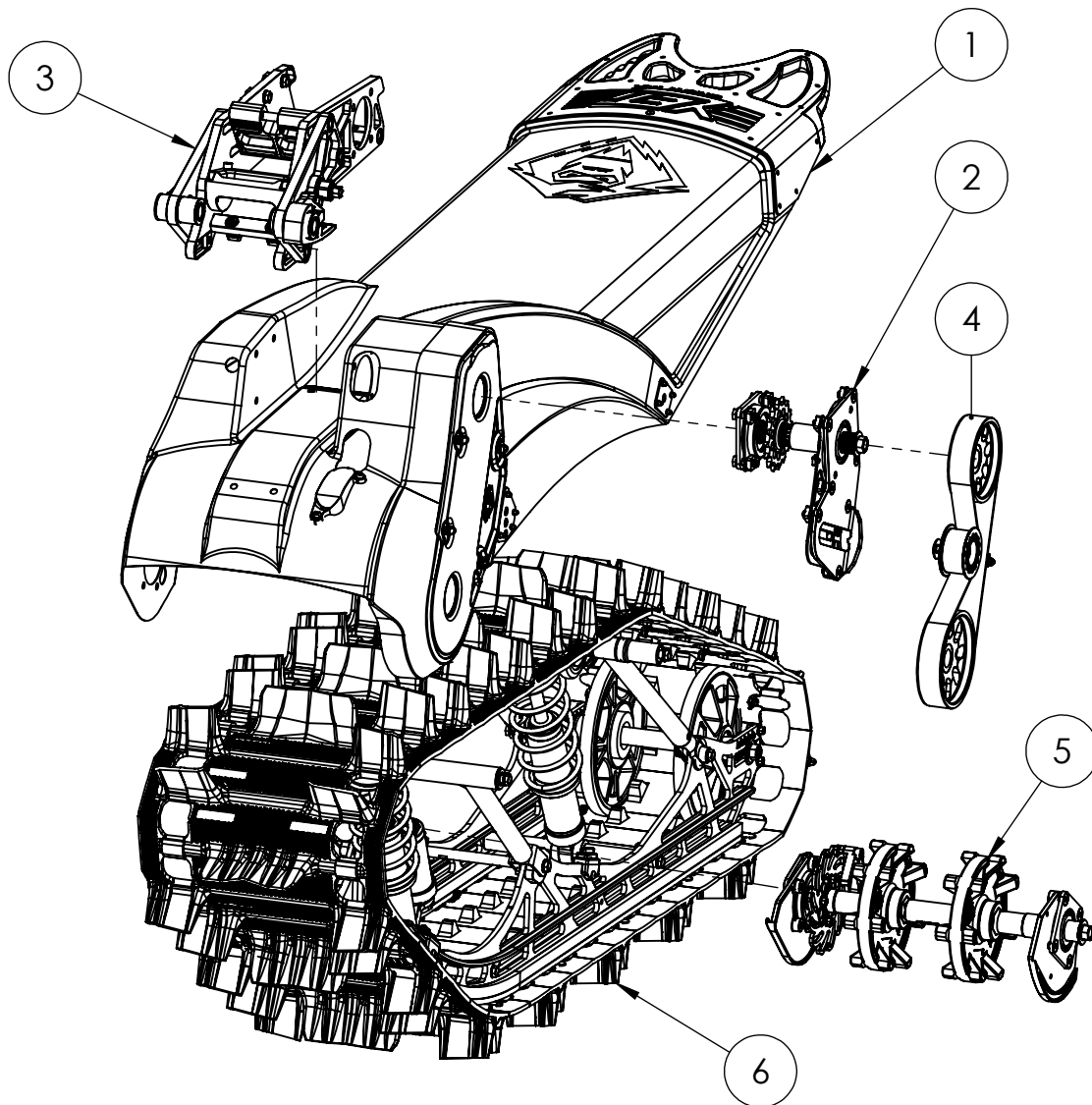


B

A

B

A



ITEM NO.	PART NUMBER	DESCRIPTION	QTY.
1	YACH1801D2	CHASSIS ASSEMBLY, 12.5 WIDE, 129 INCH	1
2	YADR1851D2	JACK SHAFT ASSEMBLY	1
3	YABM1809D5	BIKE MOUNT ASSEMBLY	1
4	YADR1853D1	SyncroDrive ASSEMBLY	1
5	YADR1852D4	DRIVE SHAFT ASSEMBLY	1
6	YASU1802D4	SUSPENSION ASSEMBLY, 129"	1

## YETI REAR ASSEMBLY, 129 FREERIDE

### C3 POWERSPORTS 2014 LTD

#1 - 17 RENAULT CRESENT,  
ST. ALBERT, AB. T8N 4B7  
PH 780 419-2040 888 267-5554 www.c3powersports.com

#### PROPRIETARY AND CONFIDENTIAL

THE INFORMATION CONTAINED IN THIS DRAWING IS THE SOLE PROPERTY OF C3 POWERSPORTS 2014 LTD. ANY REPRODUCTION IN PART OR AS A WHOLE WITHOUT THE WRITTEN PERMISSION OF C3 POWERSPORTS 2014 LTD IS PROHIBITED.



DWG. NO.

YARA1819

REV.

DATE

AUG 23 2017

WEIGHT:

2

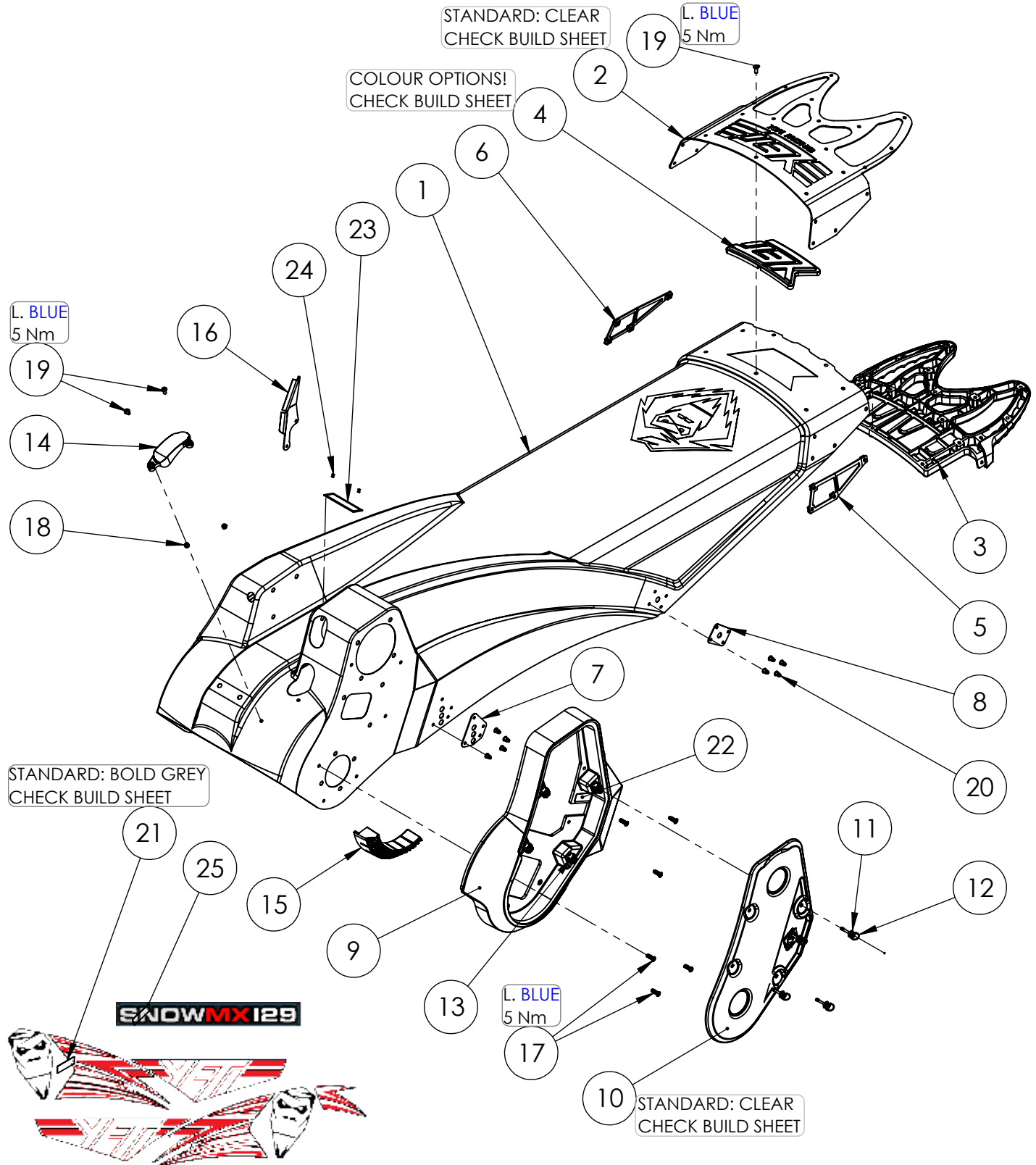
1

B

B

A

A



## CHASSIS ASSEMBLY, 129, 12.5 WIDE

### C3 POWERSPORTS 2014 LTD

#1 - 17 RENAULT CRESENT,  
ST. ALBERT, AB. T8N 4B7  
PH 780 419-2040 888 267-5554 www.c3powersports.com

#### PROPRIETARY AND CONFIDENTIAL

THE INFORMATION CONTAINED IN THIS DRAWING IS THE SOLE PROPERTY OF C3 POWERSPORTS 2014 LTD. ANY REPRODUCTION IN PART OR AS A WHOLE WITHOUT THE WRITTEN PERMISSION OF C3 POWERSPORTS 2014 LTD IS PROHIBITED.



DWG. NO.

YACH1801 D3

REV.

DATE

OCT 17 2017

WEIGHT: 10.981

2

1

ITEM NO.	PART NUMBER	DESCRIPTION	QTY.
1	YPCH1779D6	CHASSIS, 129 INCH, 12.5 WIDE	1
2	YPCH1175CLD12	BUMPER, FORMED PLATE	1
3	YPCH1176	BUMPER, MOLDED HANDLE, WIDE	1
4	YPCH1179D1	BUMPER, YETI SILICONE INSERT, BLACK	1
5	YPCH1925D3	NUT PLATE, BUMPER, LH, STEEL	1
6	YPCH1926D3	NUT PLATE, BUMPER, RH, STEEL	1
7	YPCH2553D1	SUSPENSION MOUNT PLATE, FRONT, 3 HOLE	2
8	YPCH2554D1	SUSPENSION MOUNT PLATE, 10MM HOLE, REAR	2
9	YPCH1776D9	DEFLECTOR, SyncroDrive	1
10	YPCH1107CLD7	COVER, POLYCARBONATE SYNCRODRIVE CLEAR	1
11	YPHW1586	1/4 TURN FASTENER PUSH ON RETAINER S/S	4
12	YPHW1676	DZUS, 1/4 TURN FASTENER, 27MM	4
13	YPHW1348	RECEPTICLE, 1/4 TURN, DZUS	4
14	YPCH1578D13	CHAIN SLIDER, CHASSIS	1
15	YPCH1618D3	DEFLECTOR DAMPENER, SILICONE	1
16	YPCH1159D3	BRAKE LINE PROTECTOR, FORMED, SS	1
17	YPHW1769LBD1	SCREW, M5-.8 X 16MM, ULTRA LOW HEAD HEX SOCKET	6
18	YPCH1598	THREADED INSERT, M5 X 9.4MM STL PLATED ZINC	2
19	YPHW1573LB	BOLT, M5-0.8 X 12MM BUTTON HEAD SOCKET CAP A4 S/S	26
20	YPHW2578	RIVET, 3/16 S/S GRIP RANGE .236-.335"	16
21	YPDC9547BGY	DECAL PKG 2018 129	1
22	YPCH1643D1	DECAL, SYNCRODRIVE INSTRUCTIONS	1
23	YPCH2629	SERIAL NUMBER PLATE	1
24	YPHW1336	1/8" X 1/8" S/S Pop Rivet	2
25	YPDC9553	DECAL, "YETISNOWMX129"	2

**129" YETI SHOWN.**

**FOR 120" YETI, ITEM 1 (CHASSIS) IS YPCH1810; ITEM 22 (DECALS) IS YPDC9545BGY  
FOR 137" YETI, ITEM 1 (CHASSIS) IS YPCH1827; ITEM 22 (DECALS) IS YPDC9549BGY**

## CHASSIS ASSEMBLY, 129, 12.5 WIDE

### C3 POWERSPORTS 2014 LTD

#1 - 17 RENAULT CRESENT,  
ST. ALBERT, AB. T8N 4B7  
PH 780 419-2040 888 267-5554 www.c3powersports.com

#### PROPRIETARY AND CONFIDENTIAL

THE INFORMATION CONTAINED IN THIS DRAWING IS THE SOLE PROPERTY OF C3 POWERSPORTS 2014 LTD. ANY REPRODUCTION IN PART OR AS A WHOLE WITHOUT THE WRITTEN PERMISSION OF C3 POWERSPORTS 2014 LTD IS PROHIBITED.



DWG. NO.

REV.

**YACH1801 D3**

DATE

**OCT 17 2017**

WEIGHT: 10.981

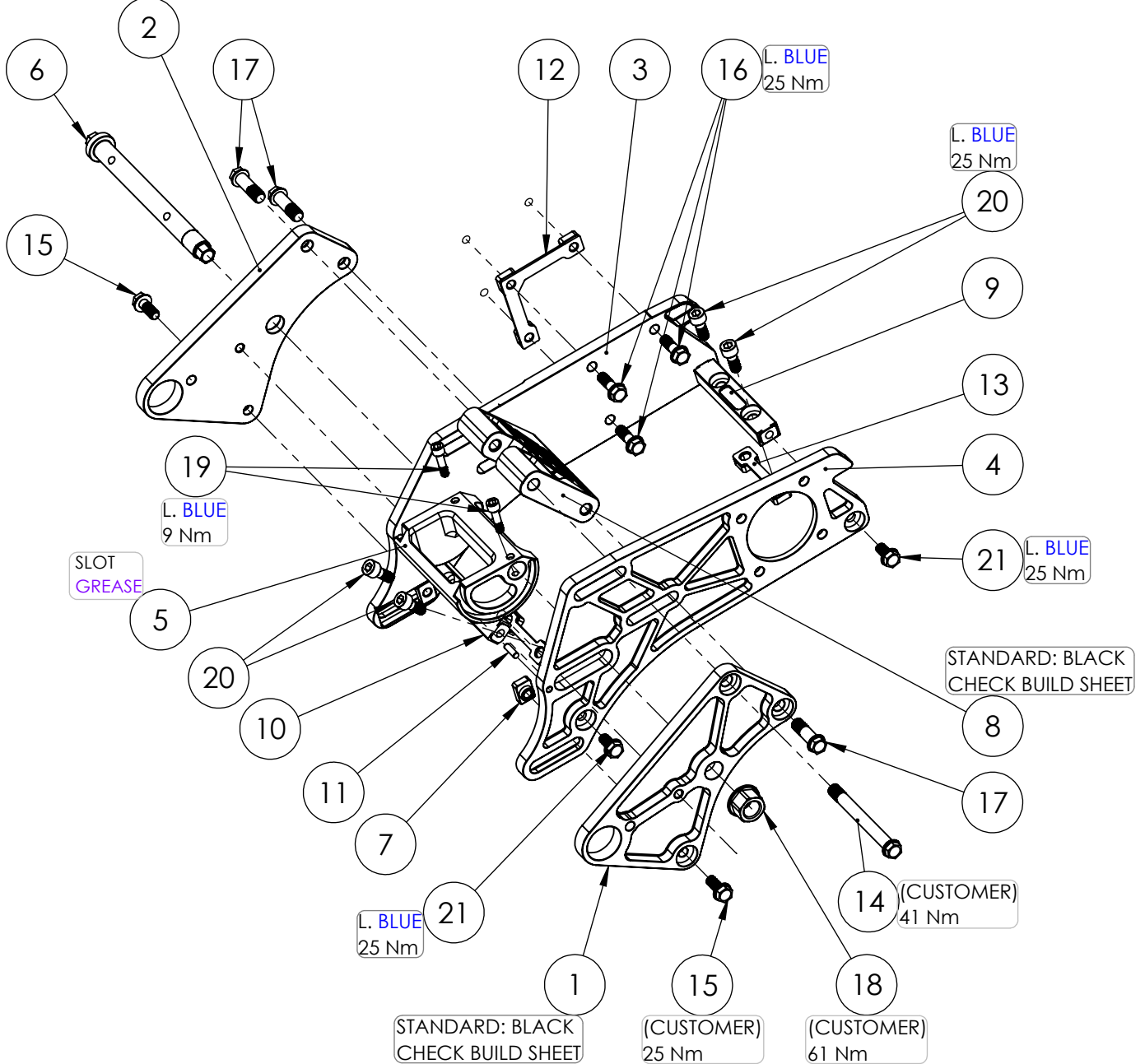
2

1

STANDARD: BLACK  
CHECK BUILD SHEET

B

B



A

A

## BIKE MOUNT ASSEMBLY

### C3 POWERSPORTS 2014 LTD

#1 - 17 RENAULT CRESENT,  
ST. ALBERT, AB. T8N 4B7  
PH 780 419-2040 888 267-5554 www.c3powersports.com

#### PROPRIETARY AND CONFIDENTIAL

THE INFORMATION CONTAINED IN THIS DRAWING IS THE SOLE PROPERTY OF C3 POWERSPORTS 2014 LTD. ANY REPRODUCTION IN PART OR AS A WHOLE WITHOUT THE WRITTEN PERMISSION OF C3 POWERSPORTS 2014 LTD IS PROHIBITED.



DWG. NO.

YABM1809 D6

REV.

DATE

AUG 23 2017

WEIGHT: 5.440

2

1

2

1

ITEM NO.	PART NUMBER	DESCRIPTION	QTY
1	YPBM1833BKD4	BIKE MOUNT, SIDE PLATE 2.2, LH	1
2	YPBM1834BKD4	BIKE MOUNT, SIDE PLATE 2.2, RH	1
3	YPBM1832D3	PLATE, TUNNEL SIDE 2.2, RH	1
4	YPBM1831D3	PLATE, TUNNEL SIDE 2.2, LH	1
5	YPBM1137D8	ECCENTRIC CAM	1
6	YPHW1130D4	BOLT, ECCENTRIC CAM	1
7	YPHW1129D1	NUT, M8-1.25, T	2
8	YPBM1880BKD2	STRUT MOUNT BLOCK, M10	1
9	YPBM2172D1	CROSS BAR, TUNNEL SIDE PLATE, REAR, .060"	1
10	YPBM1108D6	CROSS BAR, TUNNEL SIDE PLATE	1
11	YPHW1712	Dowel Pin .1875 Dia x .75 Long	2
12	YPBM1924D3	NUT PLATE, TUNNEL PLATE, RH, STEEL	1
13	YPBM1920D3	NUT PLATE, CROSS BAR, STEEL	2
14	YPHW1035D1	BOLT, M10-1.25 x 95 FLANGE HEAD 12mm HEX DRIVE, LOWER ROD END, Ti	1
15	YPHW1001D1	BOLT, M8-1.25 X 20mm, FLANGE HEAD 12mm HEX DRIVE, Ti	2
16	YPHW1897LBD1	BOLT, M8-1.25 X 25mm, FLANGE HEAD 12mm HEX DRIVE, Ti	3
17	YPHW1895D1	BOLT, M10-1.25 X 32mm, FLANGE HEAD 12mm HEX DRIVE, Ti	3
18	YPBM1593D2	NUT, M16-1.5, 28.5mm DIA FLANGE, 22MM HEX	1
19	YPHW1012LBD1	BOLT, M6-1.0 X 25mm, SOCKET HEAD 5mm DRIVE, Ti	2
20	YPHW1009LBD1	BOLT, M8-1.25 X 20mm, SOCKET HEAD 6mm DRIVE, Ti	4
21	YPHW2628LBD1	BOLT, M8-1.25 X 16mm, FLANGE HEAD 12mm HEX DRIVE, 3mm Sholder, Ti	4

## BIKE MOUNT ASSEMBLY

### C3 POWERSPORTS 2014 LTD

#1 - 17 RENAULT CRESENT,  
ST. ALBERT, AB. T8N 4B7  
PH 780 419-2040 888 267-5554 www.c3powersports.com

#### PROPRIETARY AND CONFIDENTIAL

THE INFORMATION CONTAINED IN THIS DRAWING IS THE SOLE PROPERTY OF C3 POWERSPORTS 2014 LTD. ANY REPRODUCTION IN PART OR AS A WHOLE WITHOUT THE WRITTEN PERMISSION OF C3 POWERSPORTS 2014 LTD IS PROHIBITED.



DWG. NO.

REV.

YABM1809 D6

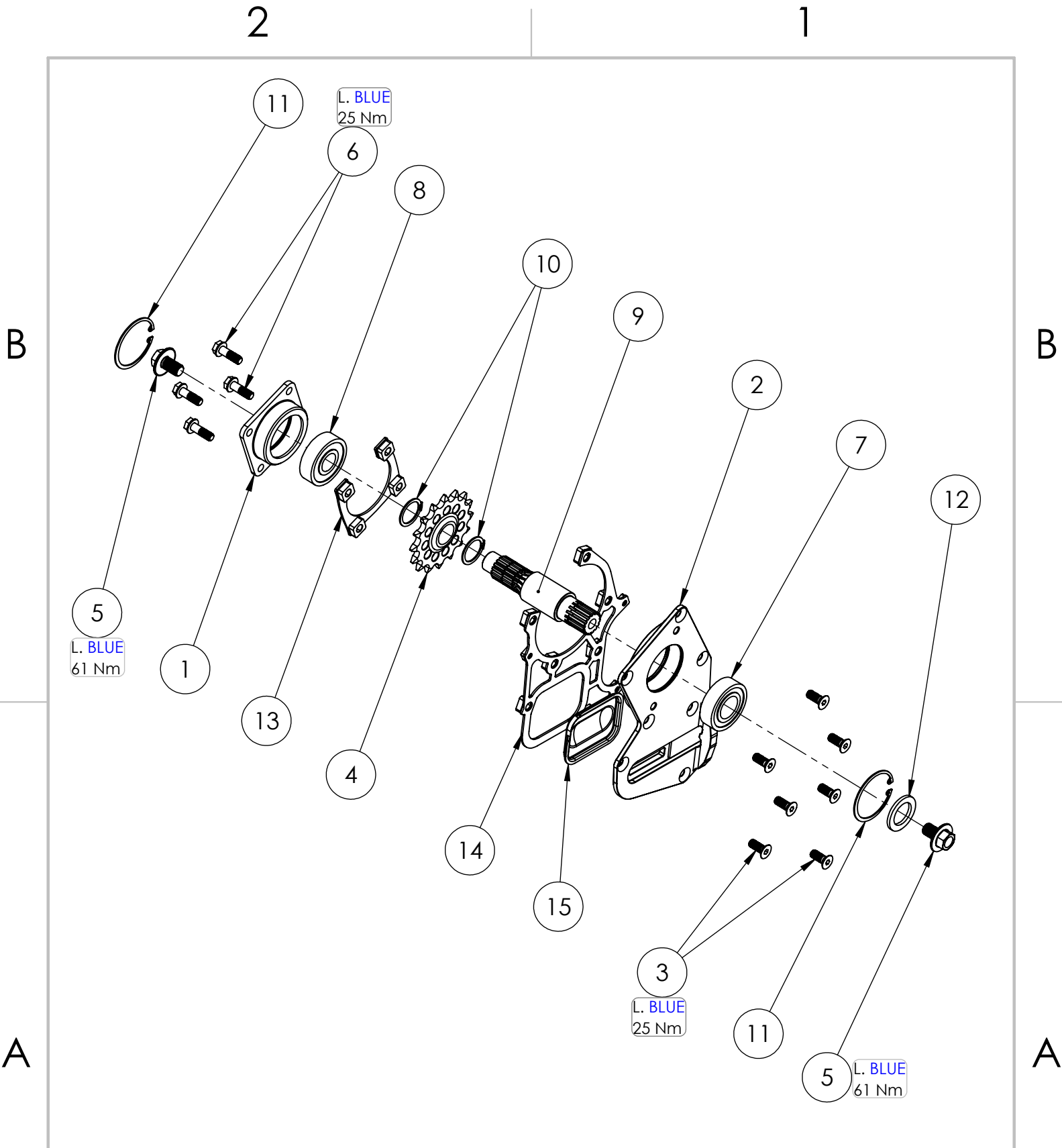
DATE

AUG 23 2017

WEIGHT: 5.440

2

1



## JACKSHAFT ASSEMBLY

### C3 POWERSPORTS 2014 LTD

#1 - 17 RENAULT CRESENT,  
ST. ALBERT, AB. T8N 4B7  
PH 780 419-2040 888 267-5554 www.c3powersports.com

#### PROPRIETARY AND CONFIDENTIAL

THE INFORMATION CONTAINED IN THIS DRAWING IS THE SOLE PROPERTY OF C3 POWERSPORTS 2014 LTD. ANY REPRODUCTION IN PART OR AS A WHOLE WITHOUT THE WRITTEN PERMISSION OF C3 POWERSPORTS 2014 LTD IS PROHIBITED.



DWG. NO.

REV.

YADR1851 D2

DATE

JUNE 16 2017

WEIGHT: 3.584



2

1

ITEM NO.	PART NUMBER	DESCRIPTION	QTY.
1	YPDR1050D2	BEARING HOLDER, JACK SHAFT	1
2	YPDR1051D17	BEARING HOLDER, JACK SHAFT, DRIVE PLATE WITH TENSIONER SLOT	1
3	YPHW1048LBD1	BOLT, M8-1.25 X 20mm FLAT HEAD 5mm SOCKET DRIVE, Ti	7
4	YPDR1724D1	SPROCKET, 16 TOOTH, 520 CHAIN, 25.2mm X 15 SPLINE	1
5	YPHW1034LBD1	BOLT, M12-1.25 X 20mm, FLANGE HEAD SPRING, 17mm HEX DRIVE, Ti	2
6	YPHW1897LBD1	BOLT, M8-1.25 X 25mm, FLANGE HEAD 12mm HEX DRIVE, Ti	4
7	YPDR1260	BEARING, 6205, 25MM X 52MM X 15MM	1
8	YPDR1259	BEARING, 6304, 20MM X 52MM X 15MM	1
9	YPDR2060D2	JACK SHAFT, 1 INCH 15 OUTPUT SPLINE, 25.2MM INPUT SPLINE, Ti	1
10	YPHW1657	SNAP RING , EXTERNAL 1" (RING#100)	2
11	YPHW1282	RING, INTERNAL SNAP, 2.00"	2
12	YPHW1057D1	WASHER, SHAFT GEAR SPACER, 1ID X 1.5OD X .125"TH	1
13	YPDR1923D3	NUT PLATE, TUNNEL PLATE, LH, STEEL	1
14	YPDR1818D2	NUT PLATE, DRIVE PLATE, STEEL	1
15	YPDR2110D2	COVER, TENSIONER BOLT	1

## JACKSHAFT ASSEMBLY

### C3 POWERSPORTS 2014 LTD

#1 - 17 RENAULT CRESENT,  
ST. ALBERT, AB. T8N 4B7  
PH 780 419-2040 888 267-5554 www.c3powersports.com

#### PROPRIETARY AND CONFIDENTIAL

THE INFORMATION CONTAINED IN THIS DRAWING IS THE SOLE PROPERTY OF C3 POWERSPORTS 2014 LTD. ANY REPRODUCTION IN PART OR AS A WHOLE WITHOUT THE WRITTEN PERMISSION OF C3 POWERSPORTS 2014 LTD IS PROHIBITED.



DWG. NO.

REV.

YADR1851 D2

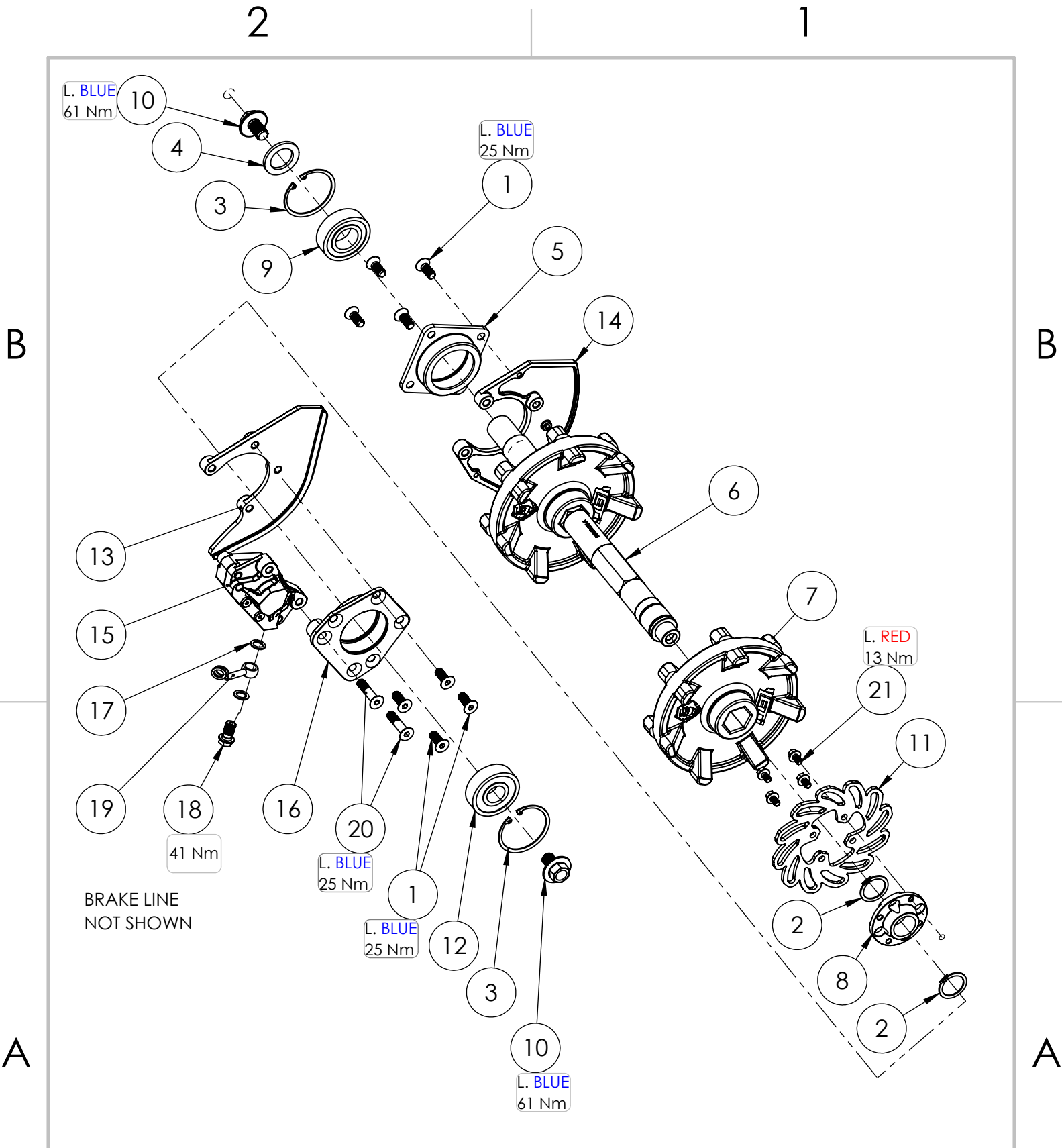
DATE

JUNE 16 2017

WEIGHT: 3.584

2

1



## DRIVESHAFT ASSEMBLY

### C3 POWERSPORTS 2014 LTD

#1 - 17 RENAULT CRESENT,  
ST. ALBERT, AB. T8N 4B7  
PH 780 419-2040 888 267-5554 www.c3powersports.com

#### PROPRIETARY AND CONFIDENTIAL

THE INFORMATION CONTAINED IN THIS DRAWING IS THE SOLE PROPERTY OF C3 POWERSPORTS 2014 LTD. ANY REPRODUCTION IN PART OR AS A WHOLE WITHOUT THE WRITTEN PERMISSION OF C3 POWERSPORTS 2014 LTD IS PROHIBITED.



DWG. NO.

REV.

YADR1852 D4

DATE

JUNE 16 2017

WEIGHT: 6.814



2

1

ITEM NO.	PART NUMBER	DESCRIPTION	QTY.
1	YPHW1048LBD1	BOLT, M8-1.25 X 20mm FLAT HEAD 5mm SOCKET DRIVE, Ti	8
2	YPHW1342	RING, EXTERNAL SNAP, 1-1/16"	2
3	YPHW1282	RING, INTERNAL SNAP, 2.00"	2
4	YPHW1057D1	WASHER, SHAFT GEAR SPACER, 1ID X 1.5OD X .125"TH	1
5	YPDR1049D4	BEARING HOLDER, DRIVE SHAFT, LH	1
6	YPDR1893	DRIVE SHAFT, 1 1/16" HEX, Ti	1
7	YPDR1919D1	DRIVER, Yeti 7 Tooth 2.86 Pitch Involute, 1.063 HEX	2
8	YPDR1976D1	HUB, BRAKE ROTOR, INTERLOCKING, 7075 ALUMINUM	1
9	YPDR1260	BEARING, 6205, 25MM X 52MM X 15MM	1
10	YPHW1034LBD1	BOLT, M12-1.25 X 20mm, FLANGE HEAD SPRING, 17mm HEX DRIVE, Ti	2
11	YPDR1781D8	BRAKE ROTOR, REDUCED SURFACE 2.0, 4 BOLT MOUNT, .150" TH	1
12	YPDR1259	BEARING, 6304, 20MM X 52MM X 15MM	1
13	YPDR1227D6	NUT PLATE, BRAKE	1
14	YPDR2109D1	NUT PLATE, DRIVE SHAFT, 1.1	1
15	YADR2394D3	BRAKE CALIPER ASSEMBLY	1
16	YPDR1040D3	BEARING AND BRAKE HOLDER, WITH BRAKE MOUNT	1
17	YPDR1564	WASHER, BRAKE, COPPER	4
18	YPHW1844D1	BOLT, M10-1.25 X 18mm, BANJO, FLANGE HEAD 12mm HEX DRIVE, Ti	1
19	YPDR1349	80" Brake line - H692/0/H693 - Black line	1
20	YPHW1036LBD1	BOLT, M8-1.25 X 35mm FLAT HEAD 5mm SOCKET DRIVE, Ti	2
21	YPHW2634LRD1	BOLT, M6-1.0 X 10mm, FLANGE HEAD 8mm HEX DRIVE, Ti	4

## DRIVESHAFT ASSEMBLY

### C3 POWERSPORTS 2014 LTD

#1 - 17 RENAULT CRESENT,  
ST. ALBERT, AB. T8N 4B7  
PH 780 419-2040 888 267-5554 www.c3powersports.com

#### PROPRIETARY AND CONFIDENTIAL

THE INFORMATION CONTAINED IN THIS DRAWING IS THE SOLE PROPERTY OF C3 POWERSPORTS 2014 LTD. ANY REPRODUCTION IN PART OR AS A WHOLE WITHOUT THE WRITTEN PERMISSION OF C3 POWERSPORTS 2014 LTD IS PROHIBITED.



DWG. NO.

REV.

YADR1852 D4

DATE

JUNE 16 2017

WEIGHT: 6.814

2

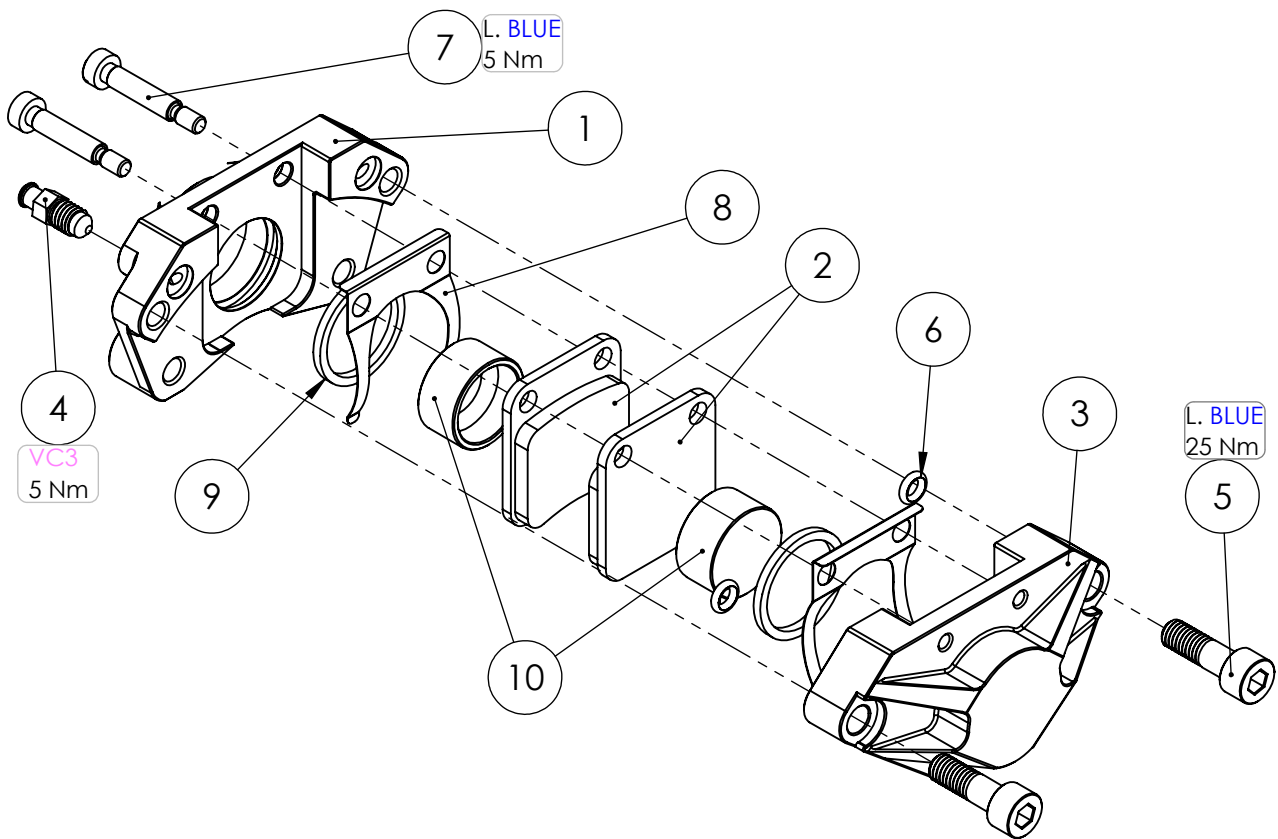
1

2

1

B

B



ITEM NO.	PART NUMBER	DESCRIPTION	QTY.
1	YPDR2390D3.5	CALIPER, MOUNTING HALF, 1.050" Piston	1
2	YPDR2395	Brake Pad, Square	2
3	YPDR2391D3.5	CALIPER, OUTER HALF, 1.050" Piston	1
4	YPDR2558	BLEEDER, BRAKE, M8-1.25	1
5	YPHW1008LBD1	BOLT, M8-1.25 X 25mm, SOCKET HEAD 6mm DRIVE, Ti	2
6	YPHW2398	Oring, #106, 3/16 ID X 3/32 C.S. X 3/8 OD	2
7	YPHW2397LB	BOLT, M5-.8 SHCS, 6MM X 25MM SHOULDER	2
8	YPDR2396D2.2	Spring, Brake Pad	2
9	YPHW2393	Oring, Brake Caliper Piston, #122 Epdm Square 70 Duro	2
10	YPDR2392D3	Caliper, Piston, 1.050" OD	2

A

A

## BRAKE CALIPER ASSEMBLY

### C3 POWERSPORTS 2014 LTD

#1 - 17 RENAULT CRESENT,  
ST. ALBERT, AB. T8N 4B7  
PH 780 419-2040 / 888 267-5554 www.c3powersports.com

#### PROPRIETARY AND CONFIDENTIAL

THE INFORMATION CONTAINED IN THIS DRAWING IS THE SOLE PROPERTY OF C3 POWERSPORTS 2014 LTD. ANY REPRODUCTION IN PART OR AS A WHOLE WITHOUT THE WRITTEN PERMISSION OF C3 POWERSPORTS 2014 LTD IS PROHIBITED.



DWG. NO.

REV.

YADR2394 D3

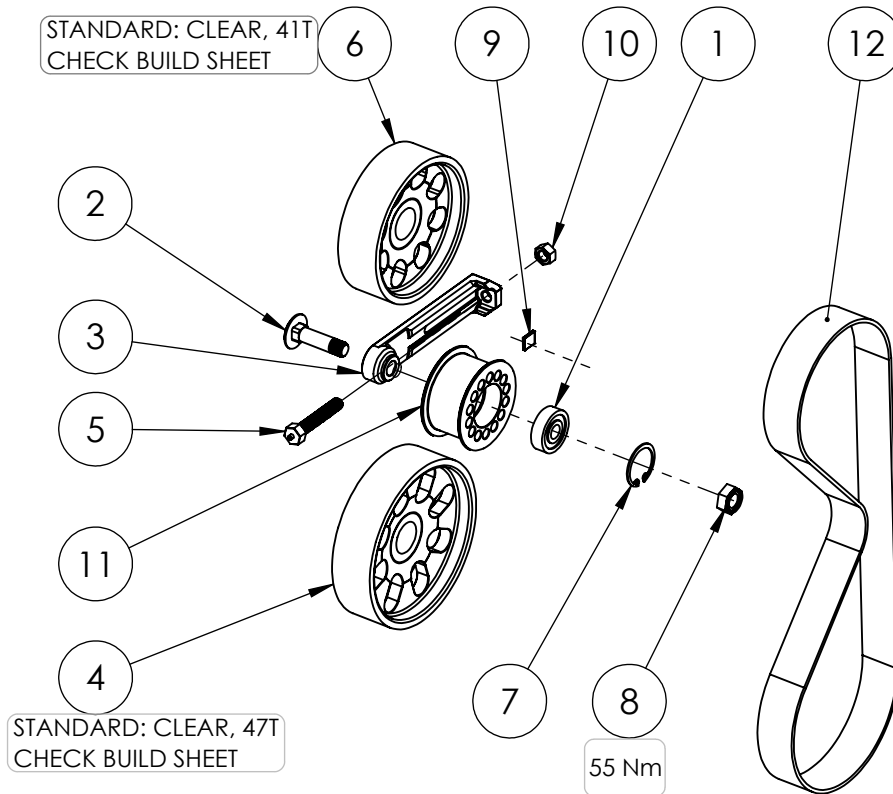
DATE

AUG 22 2017

WEIGHT:

2

1



ITEM NO.	PART NUMBER	DESCRIPTION	QTY.
1	YPDR1566	BEARING, 6200, 30MM OD X 10MM ID X 9MM WIDE	1
2	YPHW1591D1	BOLT, M10-1.25 x 45mm Carriage Bolt, Ti	1
3	YPDR1319D7	BELT TENSIONER ARM	1
4	YPDR2147CLD1	GEAR, 47 TOOTH, 28MM WIDE	1
5	YPHW1043D1	BOLT, M8-1.25 X 45mm, HEX HEAD 12mm HEX DRIVE, Ti	1
6	YPDR2141CLD1	GEAR, 41 TOOTH, 28MM WIDE	1
7	YPHW1418	RING, INTERNAL SNAP, 1-1/8 ID, FOR TENSIONER WHEEL	1
8	YPHW1059	NUT, M10-1.25, ALL METAL SELF LOCKING	1
9	YPDR1615D8	BELT DEFLECTION GAUGE	1
10	YPHW1760	NUT, M8-1.25 12MM HEX ZINC	1
11	YPDR1838D1	WHEEL, 2" IDLER FLANGED, 28MM WIDE	1
12	YPDR1792	BELT, 896MM LONG X 28MM WIDE, MITSUBOSHI GIGA TORQUE	1

## 2018 SYNCRODRIVE ASSEMBLY

### C3 POWERSPORTS 2014 LTD

#1 - 17 RENAULT CRESENT,  
ST. ALBERT, AB. T8N 4B7  
PH 780 419-2040 888 267-5554 www.c3powersports.com

#### PROPRIETARY AND CONFIDENTIAL

THE INFORMATION CONTAINED IN THIS DRAWING IS THE SOLE PROPERTY OF C3 POWERSPORTS 2014 LTD. ANY REPRODUCTION IN PART OR AS A WHOLE WITHOUT THE WRITTEN PERMISSION OF C3 POWERSPORTS 2014 LTD IS PROHIBITED.



DWG. NO.

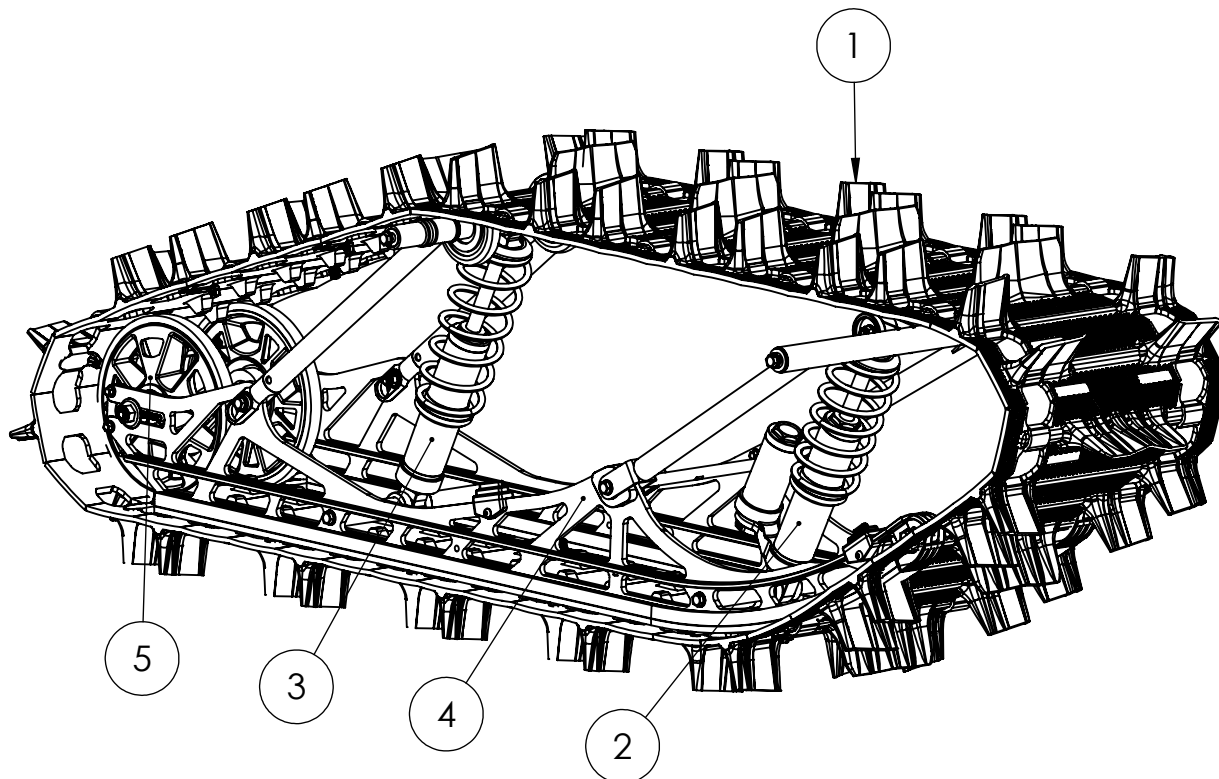
REV.

YADR1853 D1

DATE

JUNE 20 2017

WEIGHT: 2.137



ITEM NO.	PART NUMBER	DESCRIPTION	QTY
1	YPSU1983	MAXTRAK II 2.5, 12.5 WIDE, 129 LONG	1
2	YASU1805D2	SUSPENSION, FRONT ARM ASSEMBLY	1
3	YASU1814D3	SUSPENSION, REAR ARM ASSEMBLY	1
4	YASU1803D3	SUSPENSION, COMPLETE 129" LH & RH RAIL ASSEMBLY INC CROSS SHAFT	1
5	YASU1813D2	SUSPENSION, AXLE ASSEMBLY	1

129" SHOWN.

FOR 120", ITEM 1 (TRACK) IS YPSU1982. SUBASSY 4 IS DIFFERENT  
 FOR 137", ITEM 1 (TRACK) IS YPSU1984. SUBASSY'S 2, 3, 4 ARE DIFFERENT

## SUSPENSION ASSEMBLY

### C3 POWERSPORTS 2014 LTD

#1 - 17 RENAULT CRESENT,  
 ST. ALBERT, AB. T8N 4B7  
 PH 780 419-2040 / 888 267-5554 www.c3powersports.com

#### PROPRIETARY AND CONFIDENTIAL

THE INFORMATION CONTAINED IN THIS DRAWING IS THE SOLE PROPERTY OF C3 POWERSPORTS 2014 LTD. ANY REPRODUCTION IN PART OR AS A WHOLE WITHOUT THE WRITTEN PERMISSION OF C3 POWERSPORTS 2014 LTD IS PROHIBITED.



DWG. NO.

REV.

YASU1802 D4

DATE

AUG 23 2017

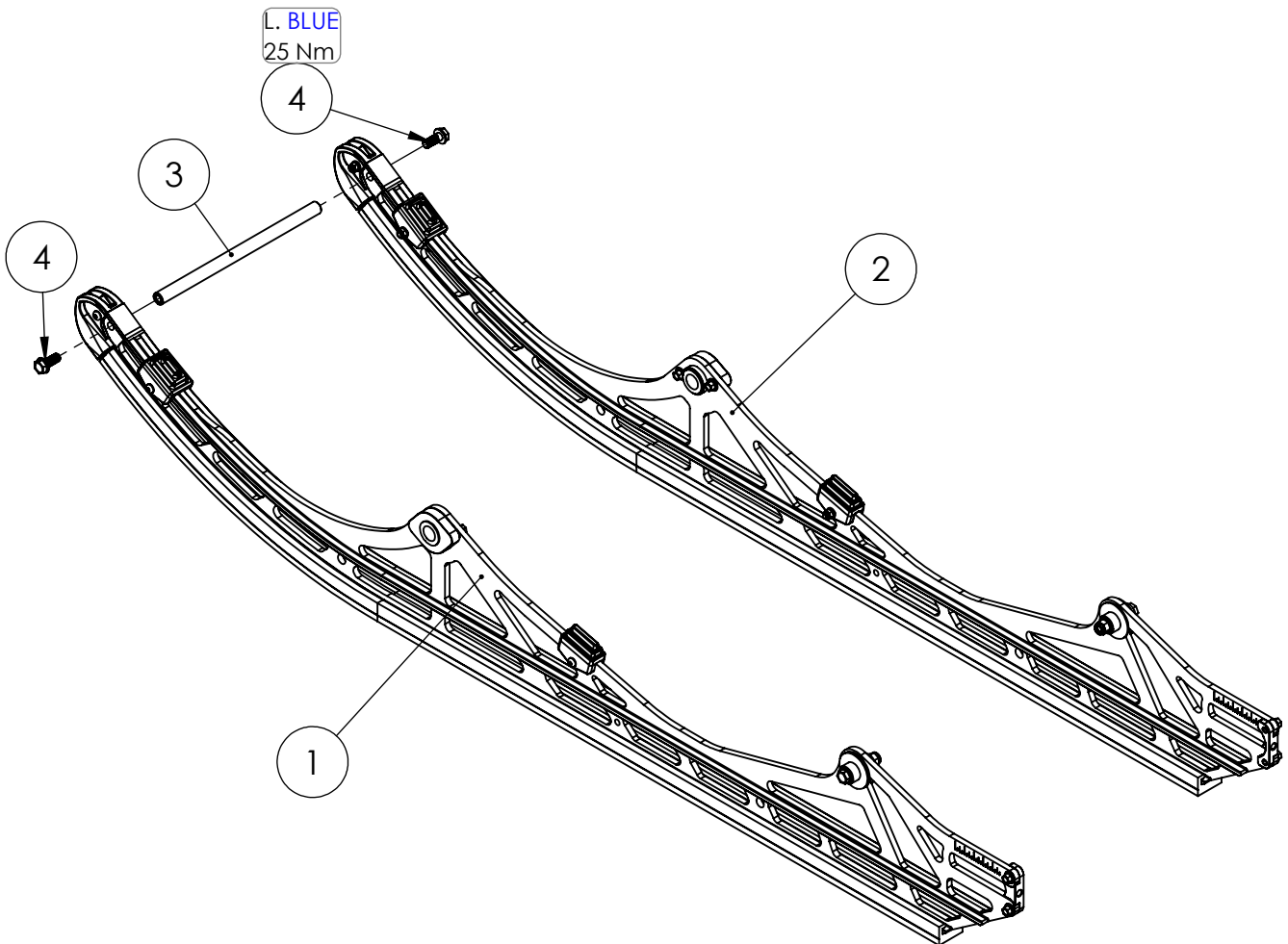
WEIGHT: 49.935

2

1

B

B



A

A

ITEM NO.	PART NUMBER	DESCRIPTION	QTY.
1	YASU1804D2LH	SUSPENSION, RAIL ASSEMBLY, 129", LH	1
2	YASU1804D2RH	SUSPENSION, RAIL ASSEMBLY, 129", RH	1
3	YPSU1862D1	SHAFT, RAIL CROSS TIES	1
4	YPHW1001LBD1	BOLT, M8-1.25 X 20mm, FLANGE HEAD 12mm HEX DRIVE, Ti	2

*129" SHOWN. RAIL SUBASSY'S DIFFERENT FOR 120", 137"*

## SKID ASSEMBLY

### C3 POWERSPORTS 2014 LTD

#1 - 17 RENAULT CRESENT,  
ST. ALBERT, AB. T8N 4B7  
PH 780 419-2040 888 267-5554 www.c3powersports.com

#### PROPRIETARY AND CONFIDENTIAL

THE INFORMATION CONTAINED IN THIS DRAWING IS THE SOLE PROPERTY OF C3 POWERSPORTS 2014 LTD. ANY REPRODUCTION IN PART OR AS A WHOLE WITHOUT THE WRITTEN PERMISSION OF C3 POWERSPORTS 2014 LTD IS PROHIBITED.



DWG. NO.

REV.

YASU1803 D3

DATE

JULY 18 2017

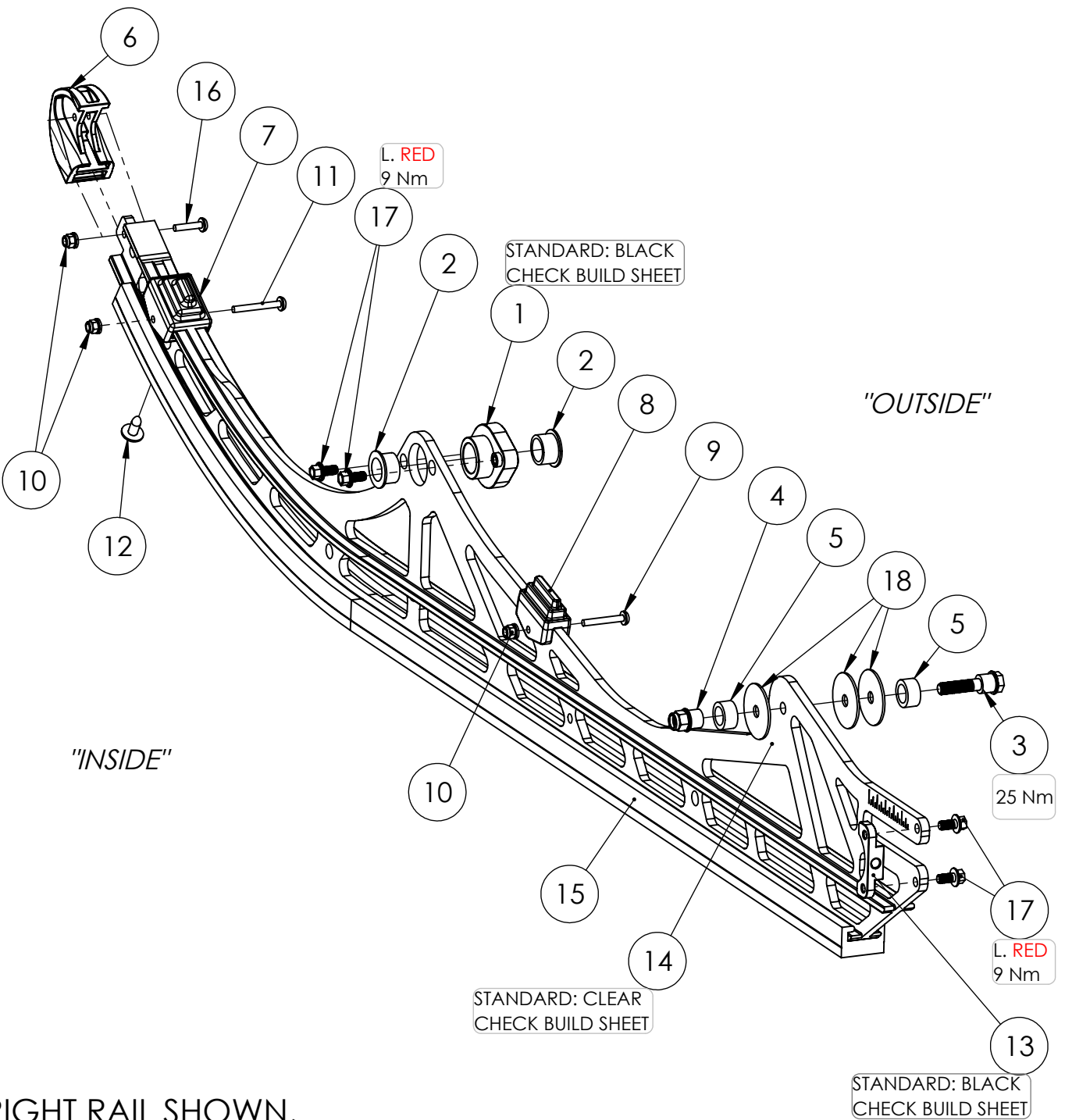
WEIGHT: 10.830

2

1

B

B



A

A

RIGHT RAIL SHOWN,  
COMPONENTS AND FASTENERS MIRRORED  
ON LEFT HAND SIDE

## SUSPENSION, RAIL ASSEMBLY, 129", RH

### C3 POWERSPORTS 2014 LTD

#1 - 17 RENAULT CRESENT,  
ST. ALBERT, AB. T8N 4B7  
PH 780 419-2040 / 888 267-5554 www.c3powersports.com

#### PROPRIETARY AND CONFIDENTIAL

THE INFORMATION CONTAINED IN THIS DRAWING IS THE SOLE PROPERTY OF C3  
POWERSPORTS 2014 LTD. ANY REPRODUCTION IN PART OR AS A WHOLE WITHOUT THE  
WRITTEN PERMISSION OF C3 POWERSPORTS 2014 LTD IS PROHIBITED.



DWG. NO.

YASU1804 D2

REV.

DATE

JULY 18 2017

WEIGHT: 5.341



ITEM	PART NUMBER	DESCRIPTION	QTY.
1	YPSU1806BKD3	MOUNT, RAIL, FRONT ARM	1
2	YPSU1370	FRONT ARM LOWER NYLON BUSHING (IN RAIL)	2
3	YPHW1392D2	BOLT, M8-1.25 X 40mm, REACTOR ARM, Ti	1
4	YPHW1393D1	NUT, M8-1.25, REACTOR ARM INNER, Ti	1
5	YPSU1391	SL2 REACTOR TRANSFER ADJUSTER STYLE 3	2
6	YPSU2443D1.5	RAIL TIP, LOW PROFILE	1
7	YPSU1877D2	BUMPER, FRONT BOTTOMING	1
8	YPSU1878D3	BUMPER, REAR BOTTOMING	1
9	YPHW1596	SCREW, M5-.8 X 30mm, BUTTON HEAD SOCKET CAP	2
10	YPHW1597	NUT, M5-.8, FLANGE NYLOCK, ZP	3
11	YPHW1617	SCREW, M5-.8 X 35mm, BUTTON HEAD SOCKET CAP	1
12	YPHW1254	SCREW, M6.3-1.81 X 16MM, PHILLIPS	1
13	YPSU1808BKD4	PLATE, REAR AXLE ADJUSTER	1
14	YPSU1829CLD6	RAIL, 129" ALUMINUM, 1.1	1
15	YPSU1328D4	SLIDER, 129" RAIL, GRAPHITE, 46.75" LONG, POLARIS PROFILE 26	1
16	YPHW2265	SCREW, M5-.8 X 20mm, BUTTON HEAD SOCKET CAP	1
17	YPHW1067LRD1	BOLT, M6-1.0 X 12mm, FLANGE HEAD 8mm HEX DRIVE, Ti	4
18	YPHW2366	Washer, White Flat Plastic .315X1.5X.062	3

*129" SHOWN.*

*FOR 120", ITEM 15 (RAIL) IS YPSU1820 & ITEM 16 (SLIDER) IS YPSU1327  
FOR 137", ITEM 15 (RAIL) IS YPSU1837 & ITEM 16 (SLIDER) IS YPSU1329*

## SUSPENSION, RAIL ASSEMBLY, 129", RH

### C3 POWERSPORTS 2014 LTD

#1 - 17 RENAULT CRESENT,  
ST. ALBERT, AB. T8N 4B7  
PH 780 419-2040 / 888 267-5554 www.c3powersports.com

#### PROPRIETARY AND CONFIDENTIAL

THE INFORMATION CONTAINED IN THIS DRAWING IS THE SOLE PROPERTY OF C3 POWERSPORTS 2014 LTD. ANY REPRODUCTION IN PART OR AS A WHOLE WITHOUT THE WRITTEN PERMISSION OF C3 POWERSPORTS 2014 LTD IS PROHIBITED.



DWG. NO.

YASU1804 D2

REV.

DATE

JULY 18 2017

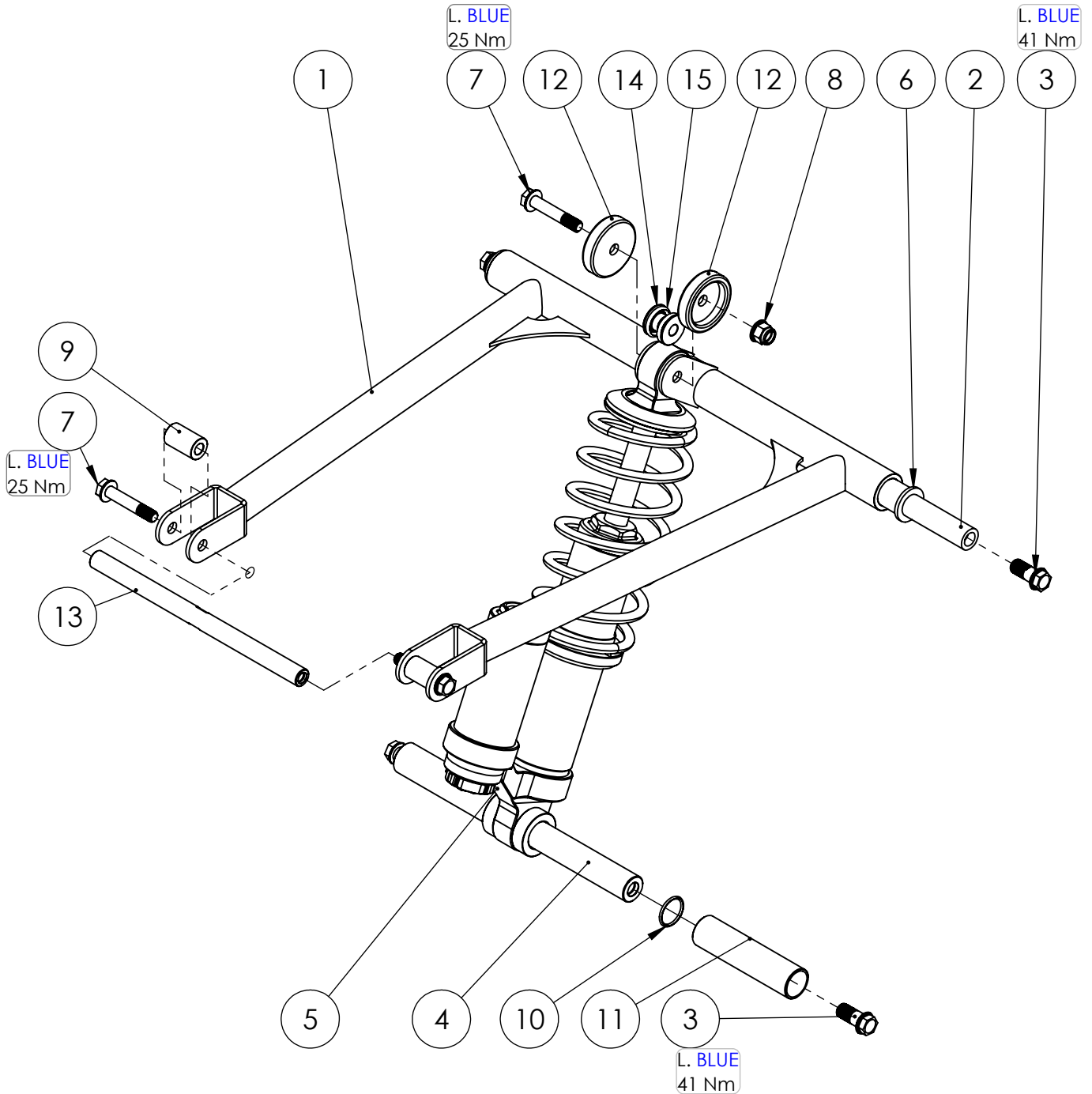
WEIGHT: 5.341

2

1

B

B



A

A

## 2018 SUSPENSION, FRONT ARM ASSEMBLY

### C3 POWERSPORTS 2014 LTD

#1 - 17 RENAULT CRESENT,  
ST. ALBERT, AB. T8N 4B7  
PH 780 419-2040 888 267-5554 www.c3powersports.com

#### PROPRIETARY AND CONFIDENTIAL

THE INFORMATION CONTAINED IN THIS DRAWING IS THE SOLE PROPERTY OF C3 POWERSPORTS 2014 LTD. ANY REPRODUCTION IN PART OR AS A WHOLE WITHOUT THE WRITTEN PERMISSION OF C3 POWERSPORTS 2014 LTD IS PROHIBITED.



DWG. NO.

REV.

YASU1805D2

DATE

JUNE 15 2017

WEIGHT: 6.110

2

1

ITEM NO.	PART NUMBER	DESCRIPTION	QTY.
1	YPSU1620D5	FRONT ARM TITANIUM WELDED GR 9, 14.45 INCH CROSS SHAFT	1
2	YPSU2556D1	SHAFT, FRONT ARM UPPER, 7075 ALUMINUM, 10MM	1
3	YPHW1894LBD1	BOLT, M10-1.25 X 22mm, FLANGE HEAD 12mm HEX DRIVE, Ti	4
4	YPSU1861D3	SHAFT, LOWER SHOCK, TI, 3/4"	1
5	YPSU1900D1	SHOCK, RAPTOR, FRONT, 90 DEGREE RESERVOIR	1
6	YPSU1369	FRONT ARM UPPER NYLON BUSHING	2
7	YPHW1376LBD1	BOLT, M8-1.25 X 43mm, FLANGE HEAD 12mm HEX DRIVE, Ti	3
8	YPHW1377D1	NUT, M8-1.25, NYLOCK, TI	1
9	YPSU1371D1	PIN, FRONT ARM LOWER, 7075 HARD ANODIZED	2
10	YPHW1987	ORING, #018, 3/4 ID X 1/16 C.S. X 7/8 OD	2
11	YPSU1863D1	COLLAR, LOWER SHOCK SHAFTS, RAPTOR	2
12	YPSU1375	UPPER FRONT ARM RUB PROTECTOR GF NYLON	2
13	YPSU2574D1	SHAFT, FRONT ARM, RAIL MOUNT CROSS TIE	1
14	YPSU2407	Bushing, Center Shock Upper, Raptor, .75 X M8	2
15	YPHW1886	ORING, #208, 5/8 ID X 1/8 C.S. X 7/8 OD, SHOCK BUSHINGS	2

*SAME FOR 120" AND 129", AS SHOWN.*

*SHOCK CAN BE UPGRADED TO YPSU2495, CHECK BUILD SHEET.*

*FOR 137" WITH FOX SHOX, ITEM 5 (SHOCK) IS YPSU1414,  
ITEM 11 (COLLARS) IS YPSU2164, & ITEM 14 (BUSHINGS) IS NOT NEEDED*

## 2018 SUSPENSION, FRONT ARM ASSEMBLY

### C3 POWERSPORTS 2014 LTD

#1 - 17 RENAULT CRESENT,  
ST. ALBERT, AB. T8N 4B7  
PH 780 419-2040 888 267-5554 www.c3powersports.com

#### PROPRIETARY AND CONFIDENTIAL

THE INFORMATION CONTAINED IN THIS DRAWING IS THE SOLE PROPERTY OF C3 POWERSPORTS 2014 LTD. ANY REPRODUCTION IN PART OR AS A WHOLE WITHOUT THE WRITTEN PERMISSION OF C3 POWERSPORTS 2014 LTD IS PROHIBITED.



DWG. NO.

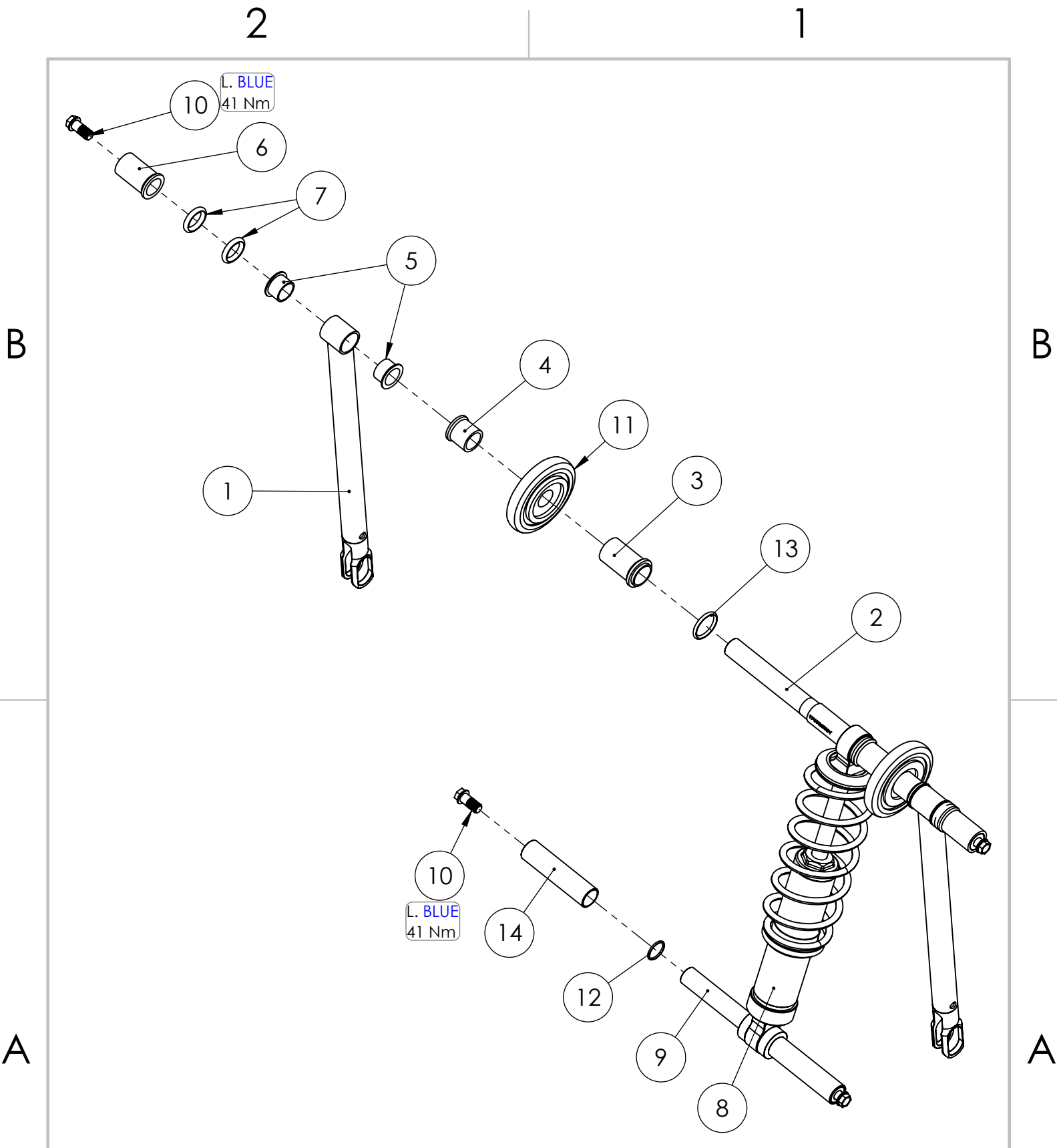
REV.

YASU1805D2

DATE

JUNE 15 2017

WEIGHT: 6.110



## 2018 SUSPENSION, REAR ARM ASSEMBLY

### C3 POWERSPORTS 2014 LTD

#1 - 17 RENAULT CRESENT,  
ST. ALBERT, AB. T8N 4B7  
PH 780 419-2040 888 267-5554 www.c3powersports.com

#### PROPRIETARY AND CONFIDENTIAL

THE INFORMATION CONTAINED IN THIS DRAWING IS THE SOLE PROPERTY OF C3 POWERSPORTS 2014 LTD. ANY REPRODUCTION IN PART OR AS A WHOLE WITHOUT THE WRITTEN PERMISSION OF C3 POWERSPORTS 2014 LTD IS PROHIBITED.



DWG. NO.

REV.

YASU1814 D3

DATE

JUNE 20 2017

WEIGHT: 4.461

ITEM NO.	PART NUMBER	DESCRIPTION	QTY.
1	YPSU2438D3	REACTOR AM, Ti	2
2	YPSU2555D1	SHAFT, REAR UPPER, TI, 10MM	1
3	YPSU1381	SPACER, REAR UPPER SHAFT INNER, PLASTIC	2
4	YPSU1382	SPACER, REAR UPPER SHAFT MIDDLE, PLASTIC	2
5	YPSU1387	BUSHING, UPPER SHAFT REACTOR, NYLON	4
6	YPSU1383	SPACER, REAR UPPER SHAFT OUTER, PLASTIC	2
7	YPSU1385	ORING, UPPER SHAFT OUTER & MID SEAL	4
8	YPSU1898D1	SHOCK, YETI RT MONO	1
9	YPSU1861D3	SHAFT, LOWER SHOCK, TI, 3/4"	1
10	YPHW1894LBD1	BOLT, M10-1.25 X 22mm, FLANGE HEAD 12mm HEX DRIVE, Ti	4
11	YPSU1217	WHEEL, 3.35" OD, 20MM ID BEARING	2
12	YPHW1987	ORING, #018, 3/4 ID X 1/16 C.S. X 7/8 OD	2
13	YPSU1384	ORING, UPPER SHAFT INNER SEAL	2
14	YPSU1863D1	COLLAR, LOWER SHOCK SHAFTS, RAPTOR	2

*SAME FOR 120" AND 129", AS SHOWN*

*SHOCK CAN BE UPGRADED TO YPSU1899 OR YPSU2494, CHECK BUILD SHEET*

*FOR 137" WITH FOX SHOX, ITEM 8 (SHOCK) IS YPSU1416,  
& ITEM 14 (COLLARS) IS YPSU2164*

## 2018 SUSPENSION, REAR ARM ASSEMBLY

### C3 POWERSPORTS 2014 LTD

#1 - 17 RENAULT CRESENT,  
ST. ALBERT, AB. T8N 4B7  
PH 780 419-2040 888 267-5554 www.c3powersports.com

#### PROPRIETARY AND CONFIDENTIAL

THE INFORMATION CONTAINED IN THIS DRAWING IS THE SOLE PROPERTY OF C3 POWERSPORTS 2014 LTD. ANY REPRODUCTION IN PART OR AS A WHOLE WITHOUT THE WRITTEN PERMISSION OF C3 POWERSPORTS 2014 LTD IS PROHIBITED.



DWG. NO.

REV.

YASU1814 D3

DATE

JUNE 20 2017

WEIGHT: 4.461

2

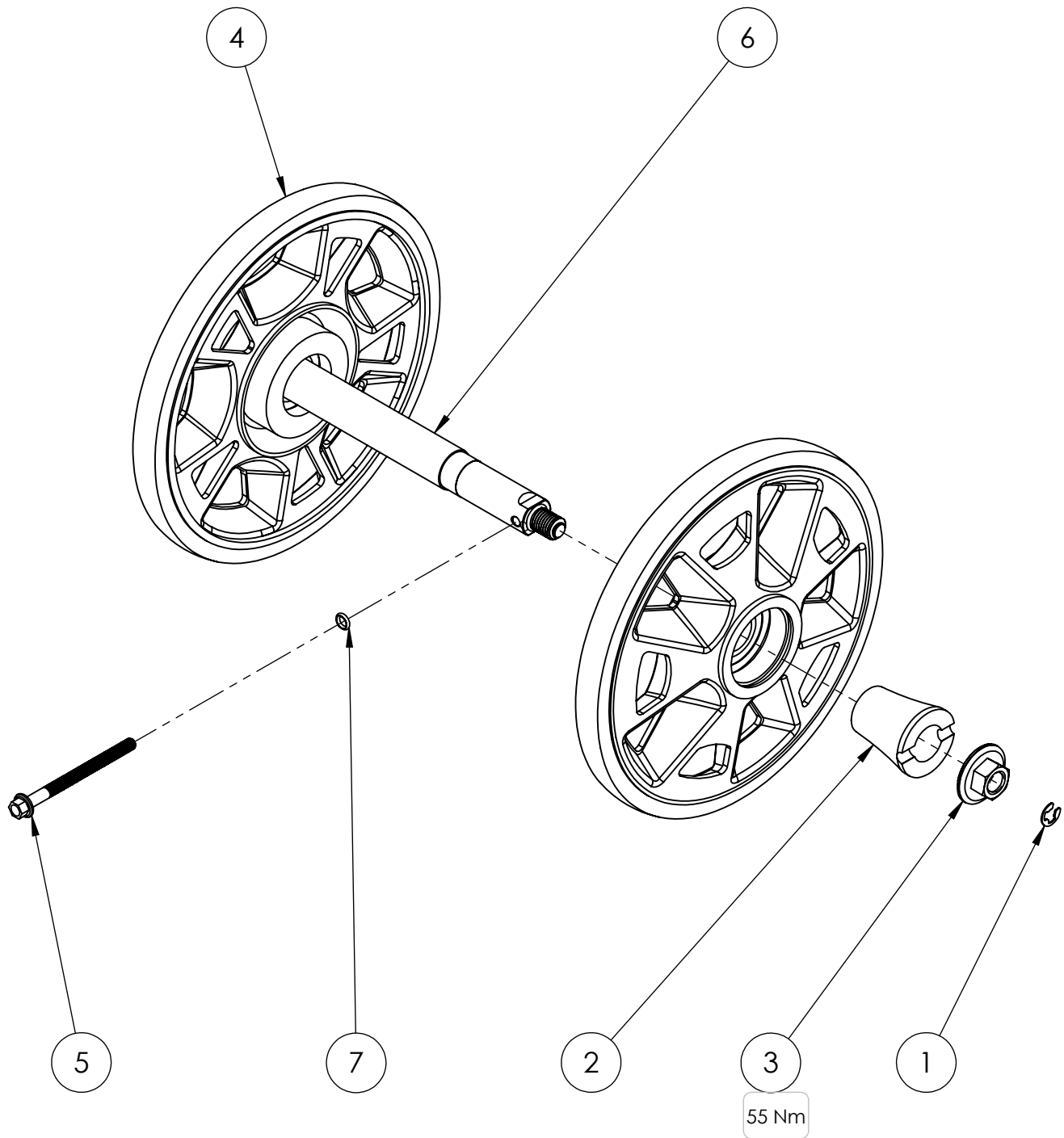
1

B

B

A

A



## SUSPENSION, AXLE ASSEMBLY

### C3 POWERSPORTS 2014 LTD

#1 - 17 RENAULT CRESENT,  
ST. ALBERT, AB. T8N 4B7  
PH 780 419-2040 888 267-5554 www.c3powersports.com

#### PROPRIETARY AND CONFIDENTIAL

THE INFORMATION CONTAINED IN THIS DRAWING IS THE SOLE PROPERTY OF C3 POWERSPORTS 2014 LTD. ANY REPRODUCTION IN PART OR AS A WHOLE WITHOUT THE WRITTEN PERMISSION OF C3 POWERSPORTS 2014 LTD IS PROHIBITED.



DWG. NO.

REV.

YASU1813D2

DATE

JUNE 13-2017

WEIGHT: 2.257

2

1



2

1

ITEM NO.	PART NUMBER	DESCRIPTION	QTY.
1	YPHW1928	EXTERNAL RETAINING RING	2
2	YPSU1362D1	COLLAR, REAR AXLE, FIBER REINFORCED PA	2
3	YPSU1361D1	NUT, M12-1.5, REAR AXLE, 17MM HEX	2
4	YPSU1901D1	WHEEL, REAR TRACK, 200MM	2
5	YPHW1640	BOLT, M6-1.0 X 75mm, FLANGE HEAD 8mm HEX DRIVE, Ti	2
6	YPSU1876D6	AXLE, REAR SUSPENSION, 7075	1
7	YPHW1695	ORING, #009 7/32 ID X 1/16 C.S. X 11/32 OD	2

## SUSPENSION, AXLE ASSEMBLY

**C3 POWERSPORTS 2014 LTD**

#1 - 17 RENAULT CRESENT,  
ST. ALBERT, AB. T8N 4B7  
PH 780 419-2040 888 267-5554 www.c3powersports.com

## PROPRIETARY AND CONFIDENTIAL

THE INFORMATION CONTAINED IN THIS DRAWING IS THE SOLE PROPERTY OF C3 POWERSPORTS 2014 LTD. ANY REPRODUCTION IN PART OR AS A WHOLE WITHOUT THE WRITTEN PERMISSION OF C3 POWERSPORTS 2014 LTD IS PROHIBITED.



DWG. NO.

REV.

YASU1813D2

DATE

JUNE 13-2017

WEIGHT: 2.257

2

1

2

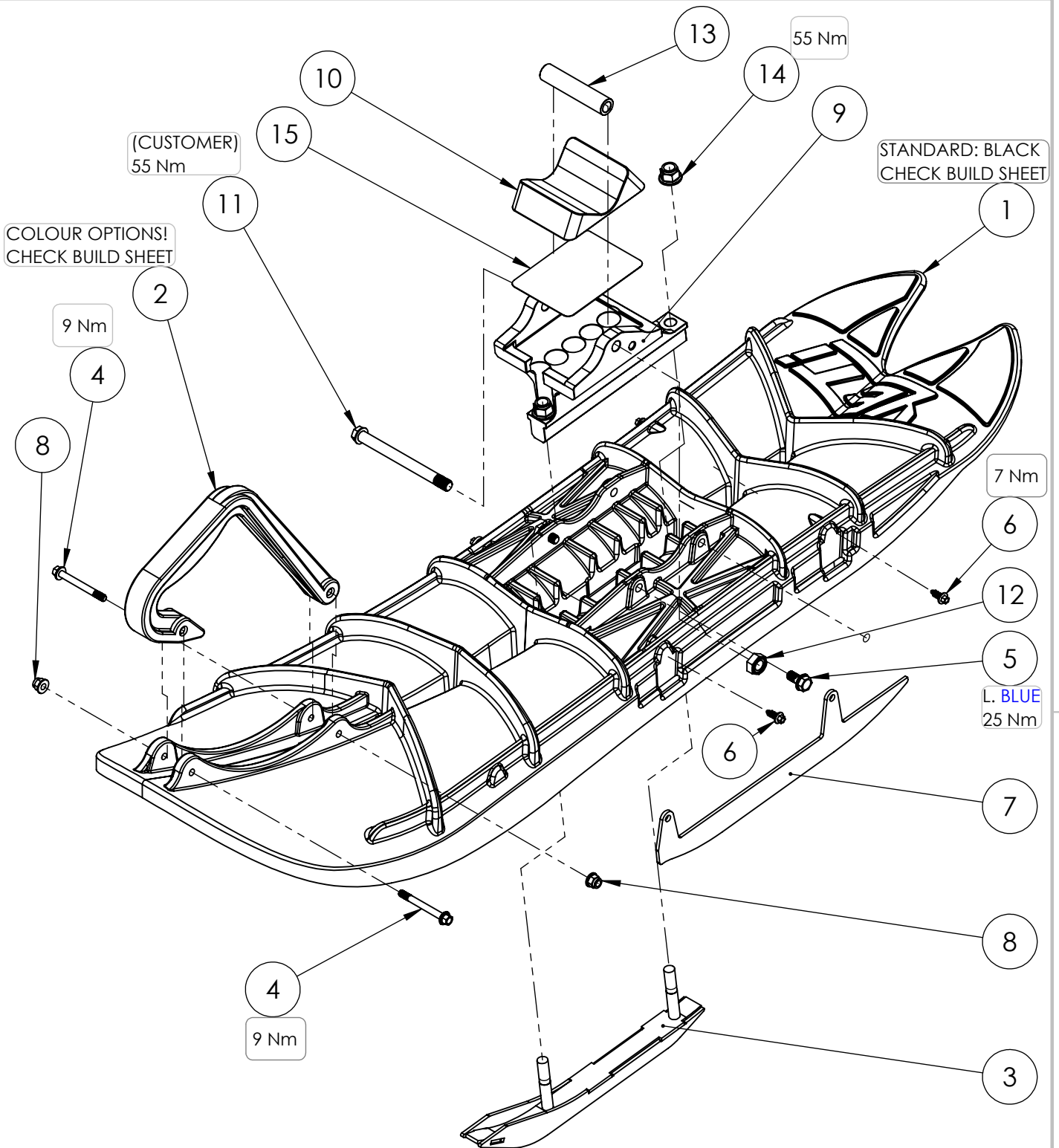
1

B

B

A

A



## SKI ASSEMBLY

### C3 POWERSPORTS 2014 LTD

#1 - 17 RENAULT CRESENT,  
ST. ALBERT, AB. T8N 4B7  
PH 780 419-2040 888 267-5554 www.c3powersports.com

#### PROPRIETARY AND CONFIDENTIAL

THE INFORMATION CONTAINED IN THIS DRAWING IS THE SOLE PROPERTY OF C3 POWERSPORTS 2014 LTD. ANY REPRODUCTION IN PART OR AS A WHOLE WITHOUT THE WRITTEN PERMISSION OF C3 POWERSPORTS 2014 LTD IS PROHIBITED.



DWG. NO.

REV.

YASK1188 D1

DATE

AUG 24 2017

WEIGHT: 11.646

2

1

2

1

ITEM NO.	PART NUMBER	DESCRIPTION	QTY.
1	YPSK1094BKD6	SKI, BLACK, 2018 REVISION	1
2	YPSK1195	SKI HANDLE, BLACK	1
3	YPSK2577D2	SKAG, HARDOX, WELDED, 2018	1
4	YPHW1030D1	BOLT, M6-1.0 X 50mm, FLANGE HEAD 8mm HEX DRIVE, Ti	2
5	YPHW1003LBD1	BOLT, M8-1.25 X 16mm, FLANGE HEAD 12mm HEX DRIVE, Ti	2
6	YPHW1066D2	SCREW, M6-2.75 x 14mm, FLANGE HEAD 6mm HEX DRIVE	4
7	YPSK1823D1	SKI, OUTSIDE RUNNER, 2017	2
8	YPHW1063D1	NUT, M6-1.0, FLANGE NYLOCK, Ti	2
9	YPSK2448D1	SKI RECIEVER, ONE PIECE, ASM, LIGHTEND	1
10	YPSK1171D4	BUMPER, SKI, YETI ASM	1
11	YPHW1599D1	BOLT, M10-1.25 x 110 FLANGE HEAD 12mm HEX DRIVE, Ti	1
12	YPHW1059	NUT, M10-1.25, ALL METAL SELF LOCKING	1
13	YPSK1172D2	BUSHING, ASM TO YETI SPINDLE, 10MM ID	1
14	YPHW1263	NUT, M10-1.5 FLANGED NYLON LOCK	2
15	YPSK1904D2	PLATE, SKI BUMPER, .020" TI	1

## SKI ASSEMBLY

**C3 POWERSPORTS 2014 LTD**

#1 - 17 RENAULT CRESENT,  
ST. ALBERT, AB. T8N 4B7  
PH 780 419-2040 888 267-5554 www.c3powersports.com

## PROPRIETARY AND CONFIDENTIAL

THE INFORMATION CONTAINED IN THIS DRAWING IS THE SOLE PROPERTY OF C3 POWERSPORTS 2014 LTD. ANY REPRODUCTION IN PART OR AS A WHOLE WITHOUT THE WRITTEN PERMISSION OF C3 POWERSPORTS 2014 LTD IS PROHIBITED.



DWG. NO.

REV.

YASK1188 D1

DATE

AUG 24 2017

WEIGHT:

2

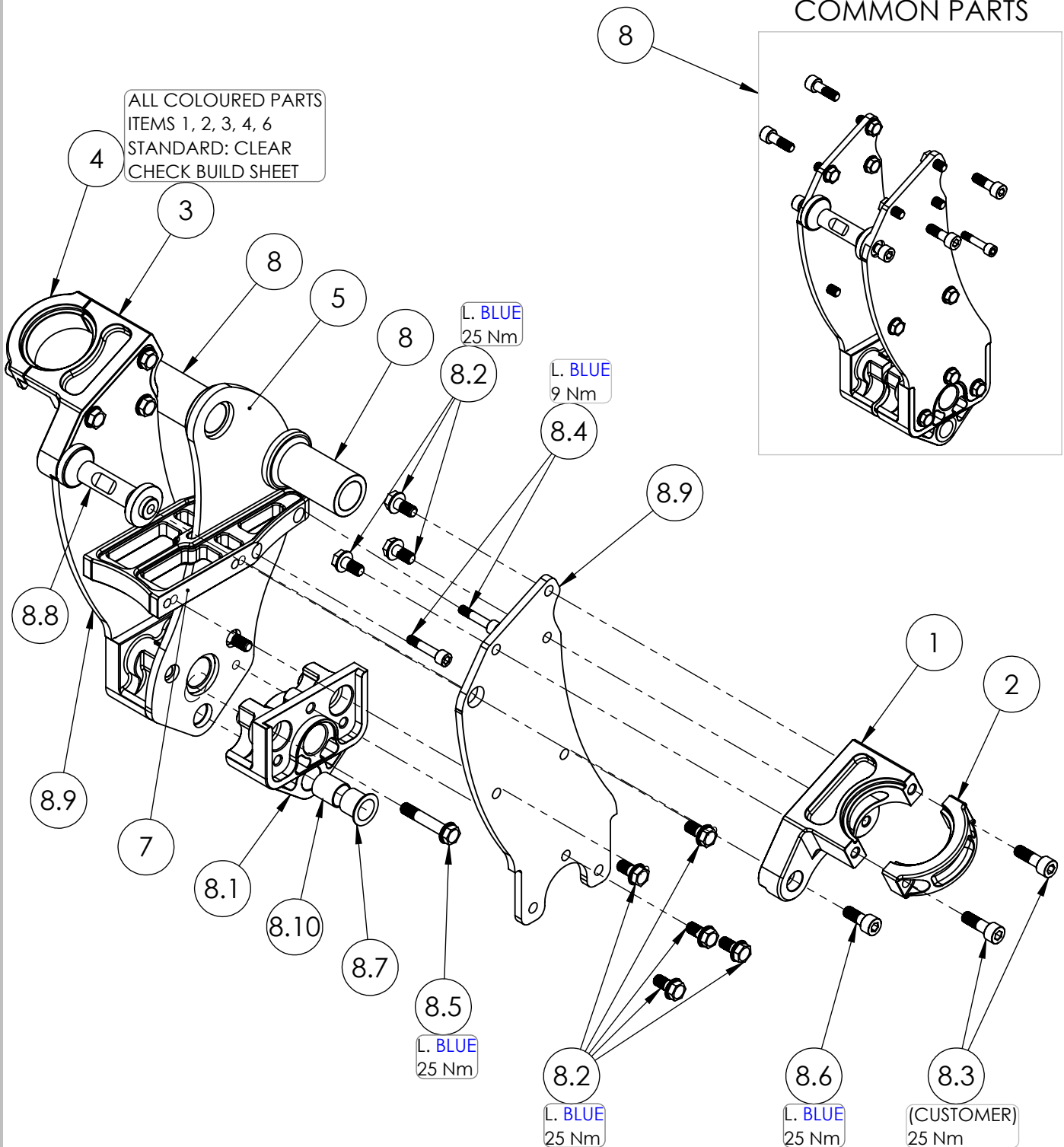
1

2

1

# YETI SPINDLE ASSEMBLY COMMON PARTS

ALL COLOURED PARTS  
ITEMS 1, 2, 3, 4, 6  
STANDARD: CLEAR  
CHECK BUILD SHEET



2018 Spindle Assembly, 33mm Offset, 48mm Drop, 48mm Fork, 190mm CL,  
15-Cur KTM & Husky 250, 300, 350, 450

## C3 POWERSPORTS 2014 LTD

#1 - 17 RENAULT CRESENT,  
ST. ALBERT, AB. T8N 4B7  
PH 780 419-2040 888 267-5554 www.c3powersports.com

### PROPRIETARY AND CONFIDENTIAL

THE INFORMATION CONTAINED IN THIS DRAWING IS THE SOLE PROPERTY OF C3  
POWERSPORTS 2014 LTD. ANY REPRODUCTION IN PART OR AS A WHOLE WITHOUT THE  
WRITTEN PERMISSION OF C3 POWERSPORTS 2014 LTD IS PROHIBITED.



DWG. NO.

REV.

YASP2467 D3

DATE

AUG 24 2017

WEIGHT: 5.74

2

1

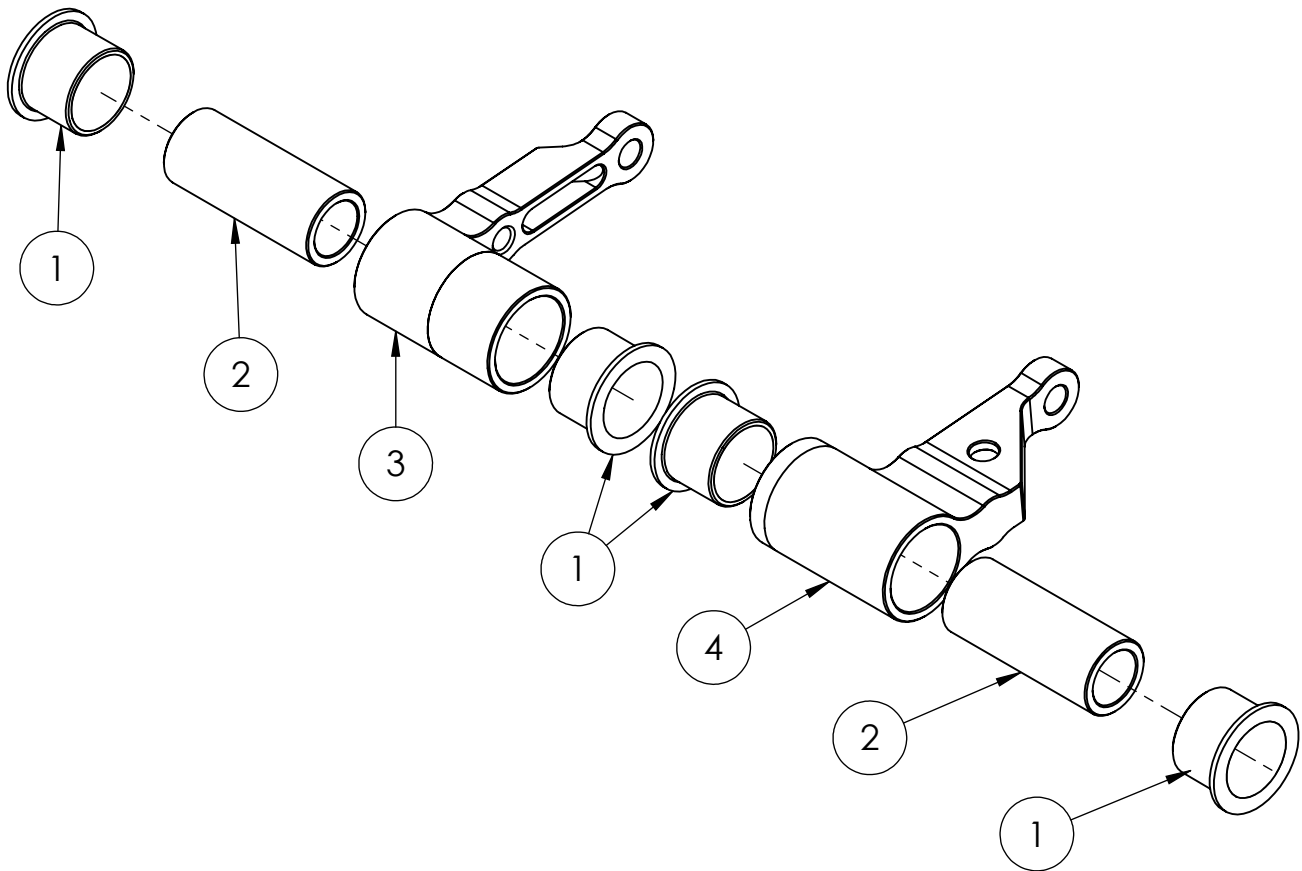
ITEM NO.	PART NUMBER	DESCRIPTION	QTY.
<b>SPINDLE BIKE-SPECIFIC PARTS</b> <b>THESE VARY BY BIKE - SEE COMPLETE ADAPTER KIT LIST</b>			
1	YPSP1432CLD1	SPINDLE FORK CLAMP, RH, 1/4" BLADE	1
2	YPSP1023CLD1	SPINDLE FORK CLAMP CAP, 48MM, RH	1
3	YPSP1431CLD1	SPINDLE FORK CLAMP, LH, 1/4" BLADE	1
4	YPSP1165CLD1	SPINDLE FORK CLAMP CAP, 48MM, LH	1
5	YPSP2401	SPINDLE BLADE, CENTER, 2018, 14.5, 33MM OFFSET, 48MM DROP, KTM/HUSKY 15-CURRENT 22MM AXLE	1
7	YPSP1079CLD1	SPINDLE BLADE SPACER	1
8	YPSP1174D2	SPINDLE AXLE SPACER, 22MM AXEL, 2.55" LONG	2
-			
8	YASP2505D1	2018 SPINDLE COMMON PART	1
8.1	YPSP1430D4	SPINDLE 1/2 BLOCK, ASM, 1/4" BLADE	2
8.2	YPHW1003LBD1	BOLT, M8-1.25 X 16mm, FLANGE HEAD 12mm HEX DRIVE, Ti	16
8.3	YPHW1008D1	BOLT, M8-1.25 X 25mm, SOCKET HEAD 6mm DRIVE, Ti	4
8.4	YPHW1594D1	BOLT, M6-1.0 X 30mm, SOCKET HEAD 5mm DRIVE, Ti	2
8.5	YPHW1376LBD1	BOLT, M8-1.25 X 43mm, FLANGE HEAD 12mm HEX DRIVE, Ti	2
8.6	YPHW1009D1	BOLT, M8-1.25 X 20mm, SOCKET HEAD 6mm DRIVE, Ti	2
8.7	YPHW1611	BEARING, IGLIDE Q2-EXTREME LOAD, 16MM ID X 18MM OD X 17MM LONG, 2MM FLANGE	2
8.8	YPSP1028D1	SPINDLE FORK CLAMP SPACER	1
8.9	YPSP2400D2	SPINDLE BLADE OUTSIDE, 2018, LH, RH, 14.5, 1/4" BLADE	2
8.10	YPSP2511	BEARING, Q2 SLEEVE	2
SPINDLE GOES IN COMPLETE ADAPTOR KIT BOX, YPBX2604 14.25x11.75x9.75			
2018 Spindle Assembly, 33mm Offset, 48mm Drop, 48mm Fork, 190mm CL, 15-Cur KTM & Husky 250, 300, 350, 450			
<b>C3 POWERSPORTS 2014 LTD</b> #1 - 17 RENAULT CRESENT, ST. ALBERT, AB. T8N 4B7 PH 780 419-2040 888 267-5554 www.c3powersports.com			DWG. NO. <b>YASP2467</b>
PROPRIETARY AND CONFIDENTIAL <small>THE INFORMATION CONTAINED IN THIS DRAWING IS THE SOLE PROPERTY OF C3 POWERSPORTS 2014 LTD. ANY REPRODUCTION IN PART OR AS A WHOLE WITHOUT THE WRITTEN PERMISSION OF C3 POWERSPORTS 2014 LTD IS PROHIBITED.</small>		DATE <b>AUG 24 2017</b>	REV. <b>D3</b> WEIGHT:

2

1

B

B



**THESE ASSEMBLIES VARY BY BIKE - SEE COMPLETE ADAPTER KIT LIST**

ITEM NO.	PART NUMBER	DESCRIPTION	QTY
1	YPBM1746	BEARING, BIKE MOUNT 2.1	4
2	YPBM2234D1	BUSHING, BIKE MOUNT 2.1, 54MM, 15-16 TM 450, LH, RH	2
3	YPBM2232D1	BIKE MOUNT, TM, RH	1
4	YPBM2231D1	BIKE MOUNT, TM, LH	1

**BIKE MOUNT ADAPTER ASSEMBLY FOR 2.2 PLATES, 14-16 TM 450**

### C3 POWERSPORTS 2014 LTD

#1 - 17 RENAULT CRESENT,  
ST. ALBERT, AB. T8N 4B7  
PH 780 419-2040 888 267-5554 www.c3powersports.com

#### PROPRIETARY AND CONFIDENTIAL

THE INFORMATION CONTAINED IN THIS DRAWING IS THE SOLE PROPERTY OF C3 POWERSPORTS 2014 LTD. ANY REPRODUCTION IN PART OR AS A WHOLE WITHOUT THE WRITTEN PERMISSION OF C3 POWERSPORTS 2014 LTD IS PROHIBITED.



DWG. NO.

REV.

**YABM2199D1**

DATE

**SEPT 27-2016**

WEIGHT: 0.499

2

1

A

A

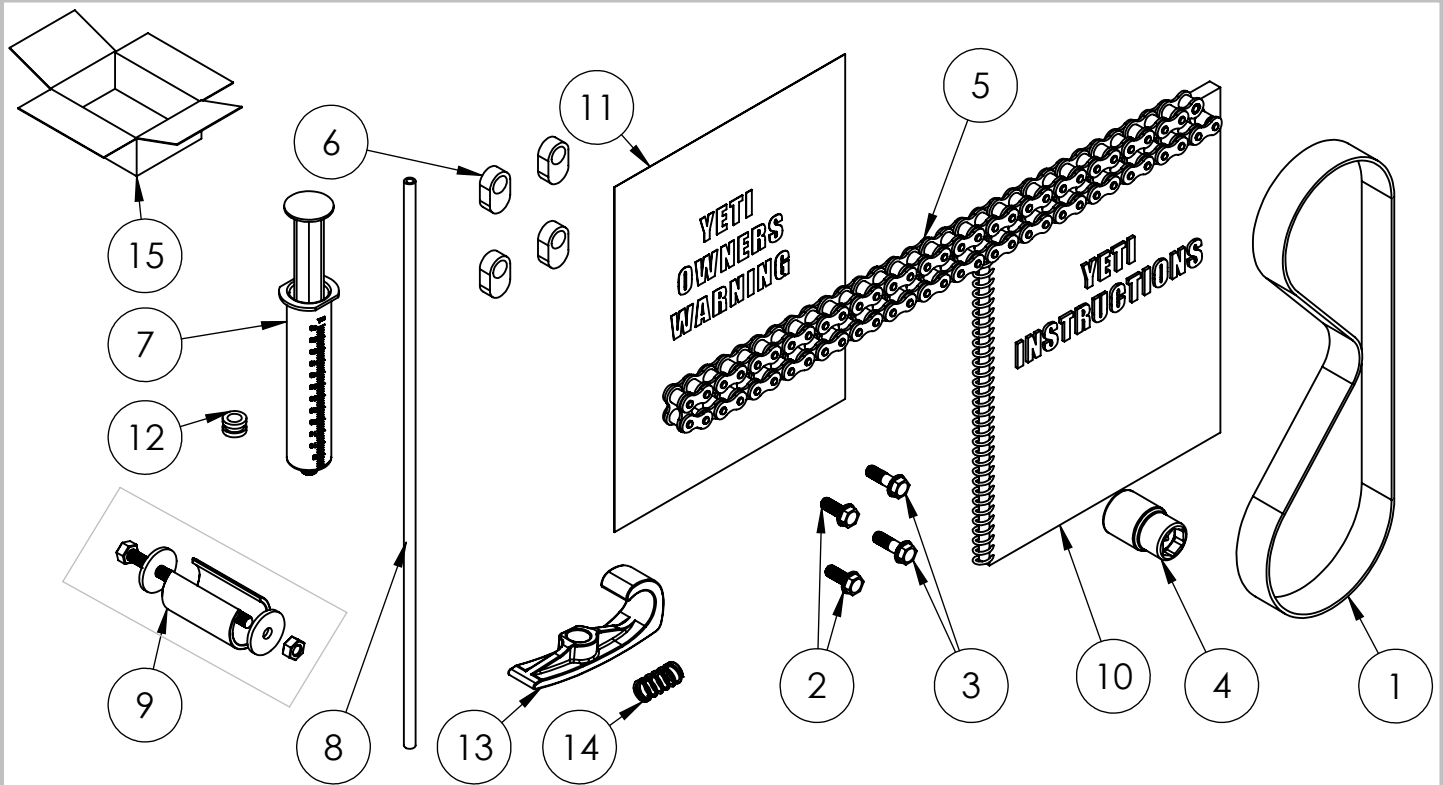


2

1

B

B



ITEM NO.	PART NUMBER	DESCRIPTION	QTY.
1	YPDR1792	BELT, 896MM LONG X 28MM WIDE, MITSUBOSHI GIGA TORQUE	1
2	YPHW1001LBD1	BOLT, M8-1.25 X 20mm, FLANGE HEAD 12mm HEX DRIVE, Ti	2
3	YPHW1897LBD1	BOLT, M8-1.25 X 25mm, FLANGE HEAD 12mm HEX DRIVE, Ti	2
4	YPHW1595D3	SOCKET, ECCENTRIC NUT, 22mm AND 19mm	1
5	YPDR1682	D.I.D. 62 LINK CHAIN 520 VX2	1
6	YPSU1389	SL2 REACTOR TRANSFER ADJUSTER STYLE 1	4
7	YPAC1710	SYRINGE, 60MM CATHETER TIP	1
8	YPAC1843	HOSE, BRAKE LINE BLEEDING 3/16" POLYURETHANE CLEAR 18" LONG	1
9	YAAC1986D1	TOOL, BIKE MOUNT INSTALL TOOL WORKS W/2.1 & 2.2 PLATES	1
10	YDIN9018	YETI 2018 INSTRUCTIONS	1
11	YDIN9005	YETI OWNERS WARNING SHEET	1
12	YPHW1683	RUBBER GROMMET 3/8"ID X 1/8" GROOVE 1/2" WIDE	1
13	YPBM1748D11	CHAIN PROTECTOR, BIKE ADAPTER, 2.1	1
14	YPHW1797	SPRING, CHAIN TENSIONER LIGHT	1
15	YPBX2603	Box, Fitment Components, 11.75x5.5x11.75	1

A

A

Common Fitment Components Parts Box 2018 12" wide 120" & 129" models

### C3 POWERSPORTS 2014 LTD

#1 - 17 RENAULT CRESENT,  
ST. ALBERT, AB. T8N 4B7  
PH 780 419-2040 888 267-5554 www.c3powersports.com

PROPRIETARY AND CONFIDENTIAL  
THE INFORMATION CONTAINED IN THIS DRAWING IS THE SOLE PROPERTY OF C3  
POWERSPORTS 2014 LTD. ANY REPRODUCTION IN PART OR AS A WHOLE WITHOUT THE  
WRITTEN PERMISSION OF C3 POWERSPORTS 2014 LTD IS PROHIBITED.



DWG. NO.

REV.

YAAK2586 D1

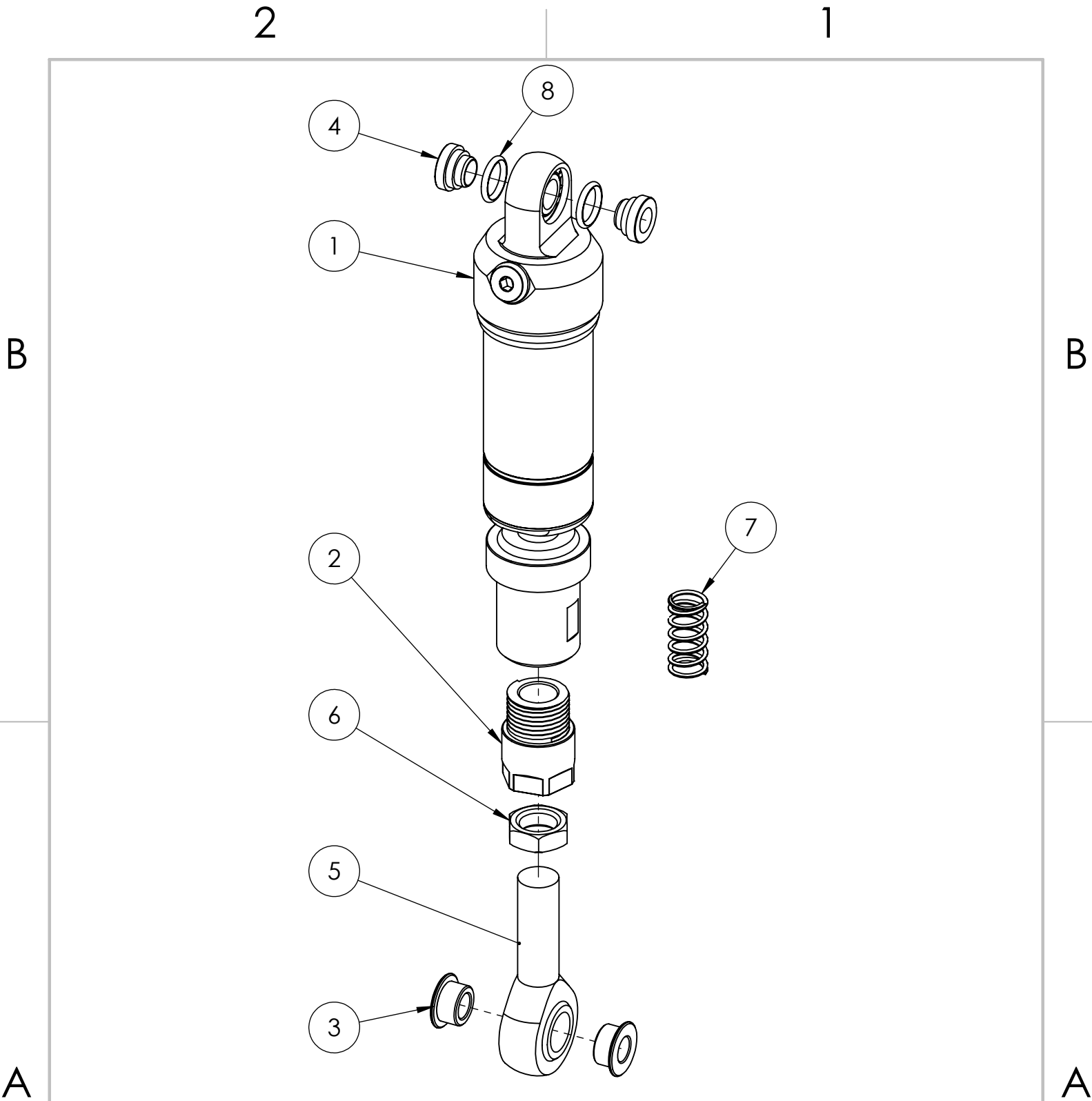
DATE

SEPT 21-2017

WEIGHT:

2

1



YSS Assembly, KTM/Husky Link

**C3 POWERSPORTS 2014 LTD**

#1 - 17 RENAULT CRESENT,  
ST. ALBERT, AB. T8N 4B7  
PH 780 419-2040 888 267-5554 www.c3powersports.com

**PROPRIETARY AND CONFIDENTIAL**

THE INFORMATION CONTAINED IN THIS DRAWING IS THE SOLE PROPERTY OF C3 POWERSPORTS 2014 LTD. ANY REPRODUCTION IN PART OR AS A WHOLE WITHOUT THE WRITTEN PERMISSION OF C3 POWERSPORTS 2014 LTD IS PROHIBITED.



DWG. NO.

REV.

**YASU2452 D1**

DATE **OCT 4 2017**

WEIGHT:

2

1

ITEM NO.	PART NUMBER	DESCRIPTION	QTY.
1	YPSU2419D1	STRUT, YSS	1
2	YPSU2427D2	STRUT, SOFT, ROD END CONNECTOR, .875"	1
3	YPBM1156	BUSHING, BETA/KXF/RMZ TOP .625 BALL END TO 10mm BOLT	2
4	YPSU2613D2	Bushing, Soft Strut Top, 24mm	2
5	YPHW1221	ROD END, RH, 5/8-18, 7075 BLACK ANODIZED	1
6	YPHW1062D1	NUT, 5/8 - 18, RH, LOCK	1
7	YPHW1798	SPRING, CHAIN TENSIONER HEAVY	1
8	YPHW2596	ORING, YSS TOP	2

### YSS Assembly, KTM/Husky Link

#### C3 POWERSPORTS 2014 LTD

#1 - 17 RENAULT CRESENT,  
ST. ALBERT, AB. T8N 4B7  
PH 780 419-2040 888 267-5554 www.c3powersports.com

#### PROPRIETARY AND CONFIDENTIAL

THE INFORMATION CONTAINED IN THIS DRAWING IS THE SOLE PROPERTY OF C3 POWERSPORTS 2014 LTD. ANY REPRODUCTION IN PART OR AS A WHOLE WITHOUT THE WRITTEN PERMISSION OF C3 POWERSPORTS 2014 LTD IS PROHIBITED.



DWG. NO.

REV.

YASU2452 D1

DATE

OCT 4 2017

WEIGHT:

2

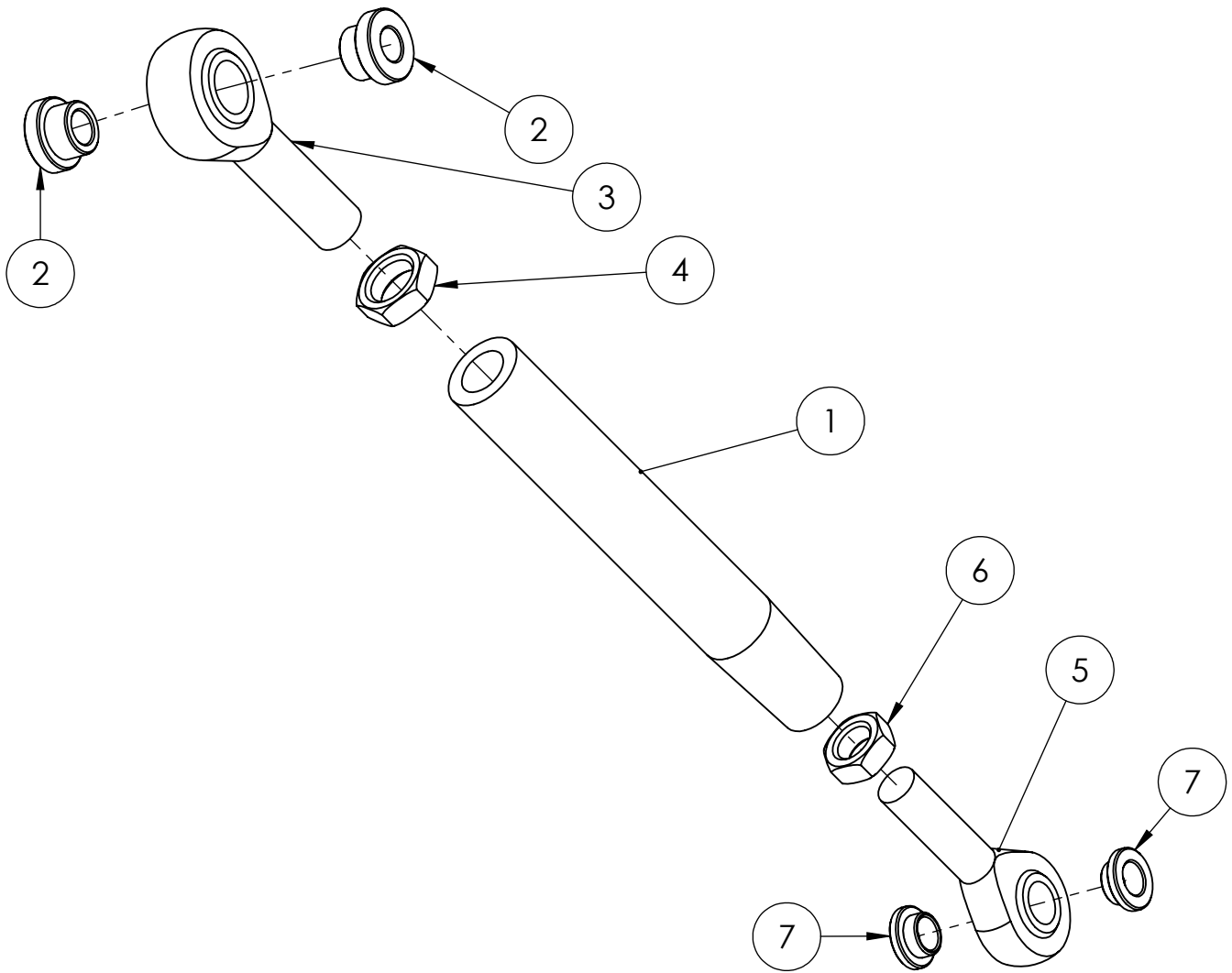
1

2

1

B

B



A

A

ITEM NO.	PART NUMBER	DESCRIPTION	QTY.
1	YPBM1240D1	STRUT, 6.5" LONG	1
2	YPBM1266D1	BUSHING, YAMAHA 450 TOP .625 BALL END TO 10mm BOLT	2
3	YPHW1221	ROD END, RH, 5/8-18, 7075 BLACK ANODIZED	1
4	YPHW1062D1	NUT, 5/8 - 18, RH, LOCK	1
5	YPHW1218	ROD END, LH, 1/2-20, 7075 BLACK ANODIZED	1
6	YPHW1061D1	NUT, 1/2-20, LH, LOCK	1
7	YPBM1134	BUSHING, .5 BALL END TO 10mm BOLT	2

**STRUT, RIGID, 8.875"-10.125" EYE TO EYE, YZF/YZFX/WR**

**C3 POWERSPORTS 2014 LTD**

#1 - 17 RENAULT CRESENT,  
ST. ALBERT, AB. T8N 4B7  
PH 780 419-2040 / 888 267-5554 www.c3powersports.com

**PROPRIETARY AND CONFIDENTIAL**

THE INFORMATION CONTAINED IN THIS DRAWING IS THE SOLE PROPERTY OF C3 POWERSPORTS 2014 LTD. ANY REPRODUCTION IN PART OR AS A WHOLE WITHOUT THE WRITTEN PERMISSION OF C3 POWERSPORTS 2014 LTD IS PROHIBITED.



DWG. NO.

REV.

**YABM1991D2**

DATE

**SEPT 21-2017**

WEIGHT:

2

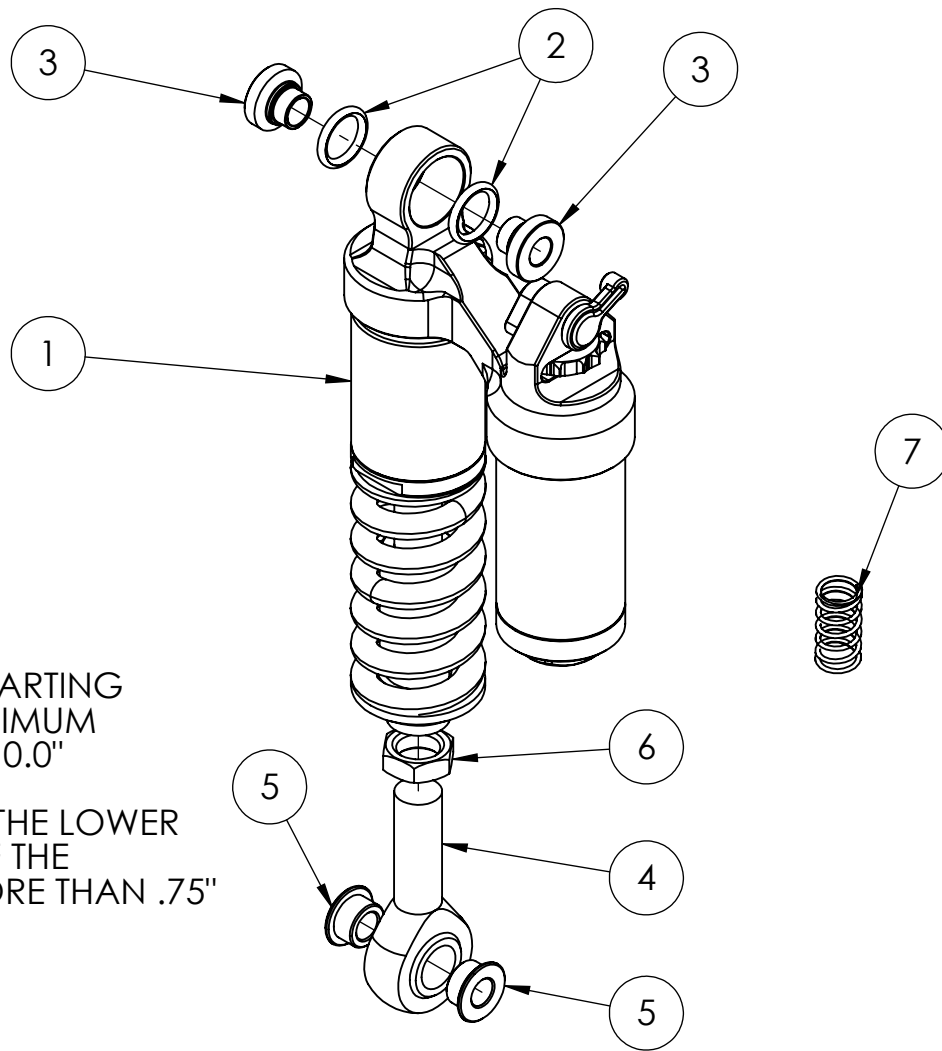
1

B

B

NOTE:  
RECOMENDED STARTING  
LENGTH AND MINIMUM  
STRUT LENGTH IS 10.0"

DO NOT EXTEND THE LOWER  
ROD END OUT OF THE  
CONNECTOR MORE THAN .75"



ITEM NO.	PART NUMBER	DESCRIPTION	QTY.
1	YPSU2181	RRS POW, SHORT, 10-10.75"	1
2	YPHW1886	ORING, #208, 5/8 ID X 1/8 C.S. X 7/8 OD, SHOCK BUSHINGS	2
3	YPSU2179	SPACER, UPPER SHOCK BUSHING FOR RRS 30mm (1.170"), 10 YAMAHA	2
4	YPHW1221	ROD END, RH, 5/8-18, 7075 BLACK ANODIZED	1
5	YPBM1156	BUSHING, BETA/KXF/RMZ TOP .625 BALL END TO 10mm BOLT	2
6	YPHW1062D1	NUT, 5/8 - 18, RH, LOCK	1
7	YPHW1798	SPRING, CHAIN TENSIONER HEAVY	1

## RRS POW ASSEMBLY, YAMAHA YZF/YZFX/WR

### C3 POWERSPORTS 2014 LTD

#1 - 17 RENAULT CRESENT,  
ST. ALBERT, AB. T8N 4B7  
PH 780 419-2040 / 888 267-5554 www.c3powersports.com

PROPRIETARY AND CONFIDENTIAL  
THE INFORMATION CONTAINED IN THIS DRAWING IS THE SOLE PROPERTY OF C3  
POWERSPORTS 2014 LTD. ANY REPRODUCTION IN PART OR AS A WHOLE WITHOUT THE  
WRITTEN PERMISSION OF C3 POWERSPORTS 2014 LTD IS PROHIBITED.



DWG. NO.

REV.

YASU2111D2

DATE

JAN 24-2017

WEIGHT:

A

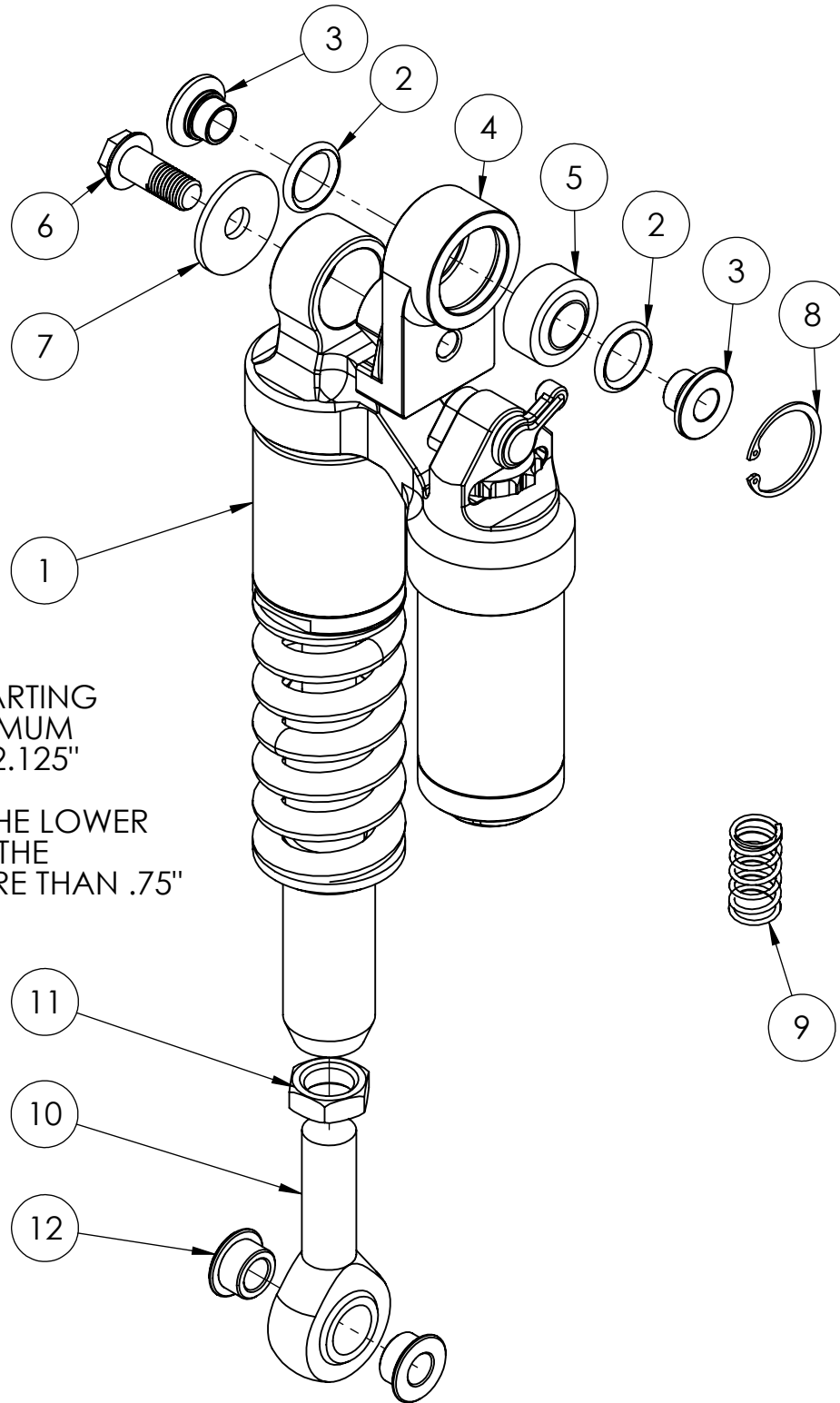
A

2

1

B

B



NOTE:  
RECOMENDED STARTING  
LENGTH AND MINIMUM  
STRUT LENGTH IS 12.125"

DO NOT EXTEND THE LOWER  
ROD END OUT OF THE  
CONNECTOR MORE THAN .75"

A

A

## RRS Pow Shock Assembly, KTM/Husky/Husa Pds

### C3 POWERSPORTS 2014 LTD

#1 - 17 RENAULT CRESENT,  
ST. ALBERT, AB. T8N 4B7  
PH 780 419-2040 / 888 267-5554 [www.c3powersports.com](http://www.c3powersports.com)

#### PROPRIETARY AND CONFIDENTIAL

THE INFORMATION CONTAINED IN THIS DRAWING IS THE SOLE PROPERTY OF C3  
POWERSPORTS 2014 LTD. ANY REPRODUCTION IN PART OR AS A WHOLE WITHOUT THE  
WRITTEN PERMISSION OF C3 POWERSPORTS 2014 LTD IS PROHIBITED.



DWG. NO.

REV.

YASU2116D2

DATE

OCT 3-2017

WEIGHT:

2

1

2

1

ITEM NO.	PART NUMBER	DESCRIPTION	QTY.
1	YPSU2183	RRS POW, LONG, 11.125-11.875"	1
2	YPHW1886	ORING, #208, 5/8 ID X 1/8 C.S. X 7/8 OD, SHOCK BUSHINGS	2
3	YPSU2180	SPACER, UPPER SHOCK BUSHING FOR RRS 24mm (.940"), 12 KTM	2
4	YPSU2132D1	ADAPTER, RSS MED SHOCK TO PDS	1
5	YPHW2405	BEARING, COM 9 SEPHERICAL	1
6	YPHW2312	BOLT, M10-1.25 X 25mm, FLANGE HEAD HEX DRIVE	1
7	YPHW2313	WASHER, SPRING. M10 ID X M22 OD	1
8	YPHW2406	SNAP RING, INTERNAL, COM 9	1
9	YPHW1798	SPRING, CHAIN TENSIONER HEAVY	1
10	YPHW1221	ROD END, RH, 5/8-18, 7075 BLACK ANODIZED	1
11	YPHW1062D1	NUT, 5/8 - 18, RH, LOCK	1
12	YPBM1156	BUSHING, BETA/KXF/RMZ TOP .625 BALL END TO 10mm BOLT	2

# C3 POWERSPORTS 2014 LTD

#1 - 17 RENAULT CRESENT,  
ST. ALBERT, AB. T8N 4B7  
PH 780 419-2040 / 888 267-5554 www.c3powersports.com

## PROPRIETARY AND CONFIDENTIAL

THE INFORMATION CONTAINED IN THIS DRAWING IS THE SOLE PROPERTY OF C3 POWERSPORTS 2014 LTD. ANY REPRODUCTION IN PART OR AS A WHOLE WITHOUT THE WRITTEN PERMISSION OF C3 POWERSPORTS 2014 LTD IS PROHIBITED.



DWG. NO.

REV.

YASU2116D2

DATE

OCT 3-2017

WEIGHT:

2

1

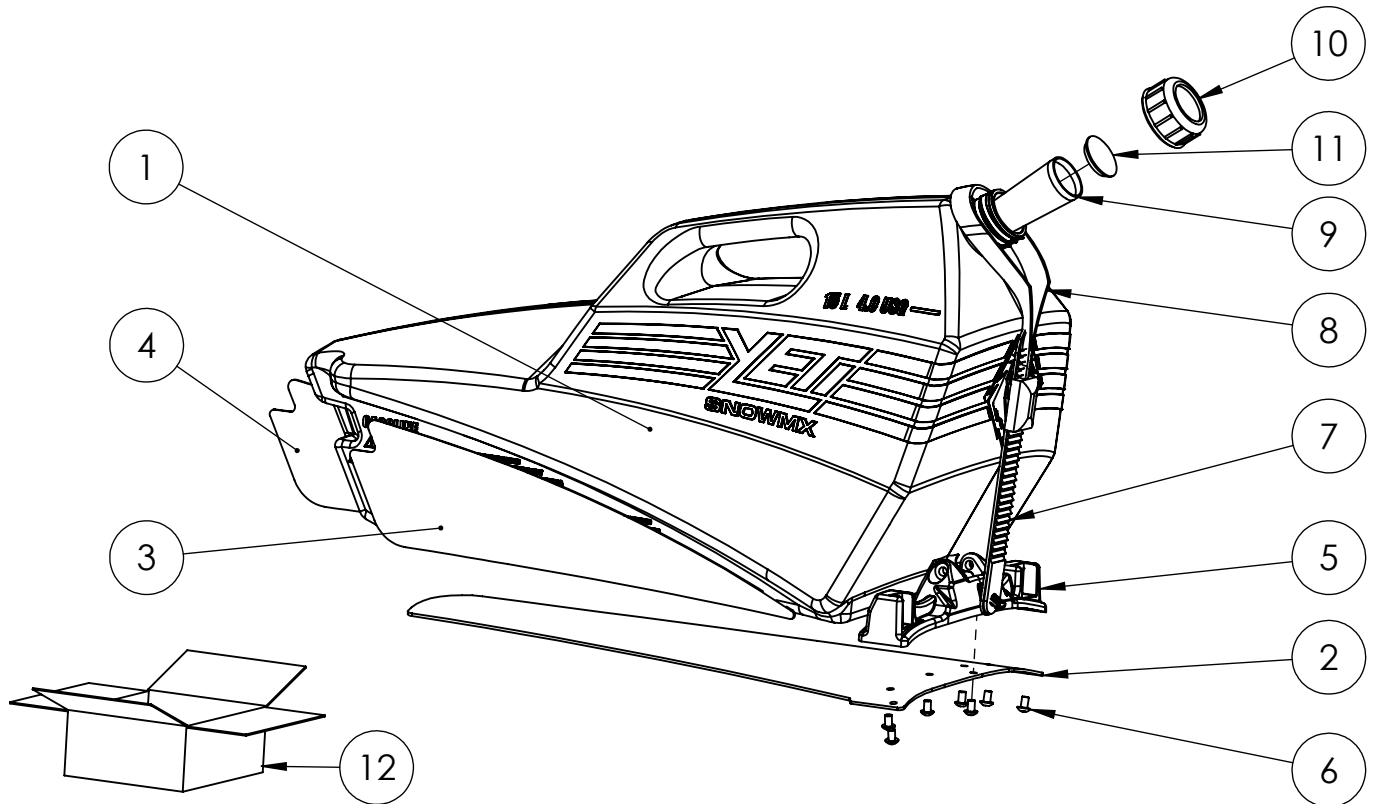


2

1

B

B



ITEM NO.	PART NUMBER	DESCRIPTION	QTY.
1	YPAC2154D1.8	YETI TANK, 15 LITER, RED	1
2	YPAC1733D8	Foam, YPAC1628 Utility Container Mount	1
3	YPAC1735D2	Foam, Utility Container Side, LH	1
4	YPAC1736D2	Foam, Utility Container Side, RH	1
5	YPAC1628D19.21	YETI Can Mount	1
6	YPHW1732LB	BOLT, M5-0.8 X 8MM BUTTON HEAD SOCKET CAP A4 S/S	7
7	YPAC2276	STRAP, 220MM LADDER	1
8	YPAC2278	Buckle, PS1-H Ratcheting/Strap	1
9	YPAC1738	SPOUT, UTILITY CAN	1
10	YPAC1739	CAP, UTILITY CAN	1
11	YPAC1740	STOPPER, UTILITY CAN	1
12	YPBX2605	Box, Utility Container, 22x11.75x11.75	1

A

A

## CONTAINER, YETI UTILITY ASSEMBLY

### C3 POWERSPORTS 2014 LTD

#1 - 17 RENAULT CRESENT,  
ST. ALBERT, AB. T8N 4B7  
PH 780 419-2040 / 888 267-5554 www.c3powersports.com

#### PROPRIETARY AND CONFIDENTIAL

THE INFORMATION CONTAINED IN THIS DRAWING IS THE SOLE PROPERTY OF C3 POWERSPORTS 2014 LTD. ANY REPRODUCTION IN PART OR AS A WHOLE WITHOUT THE WRITTEN PERMISSION OF C3 POWERSPORTS 2014 LTD IS PROHIBITED.



DWG. NO.

YAAC1768

REV.

DATE

NOV 20-2016

WEIGHT:

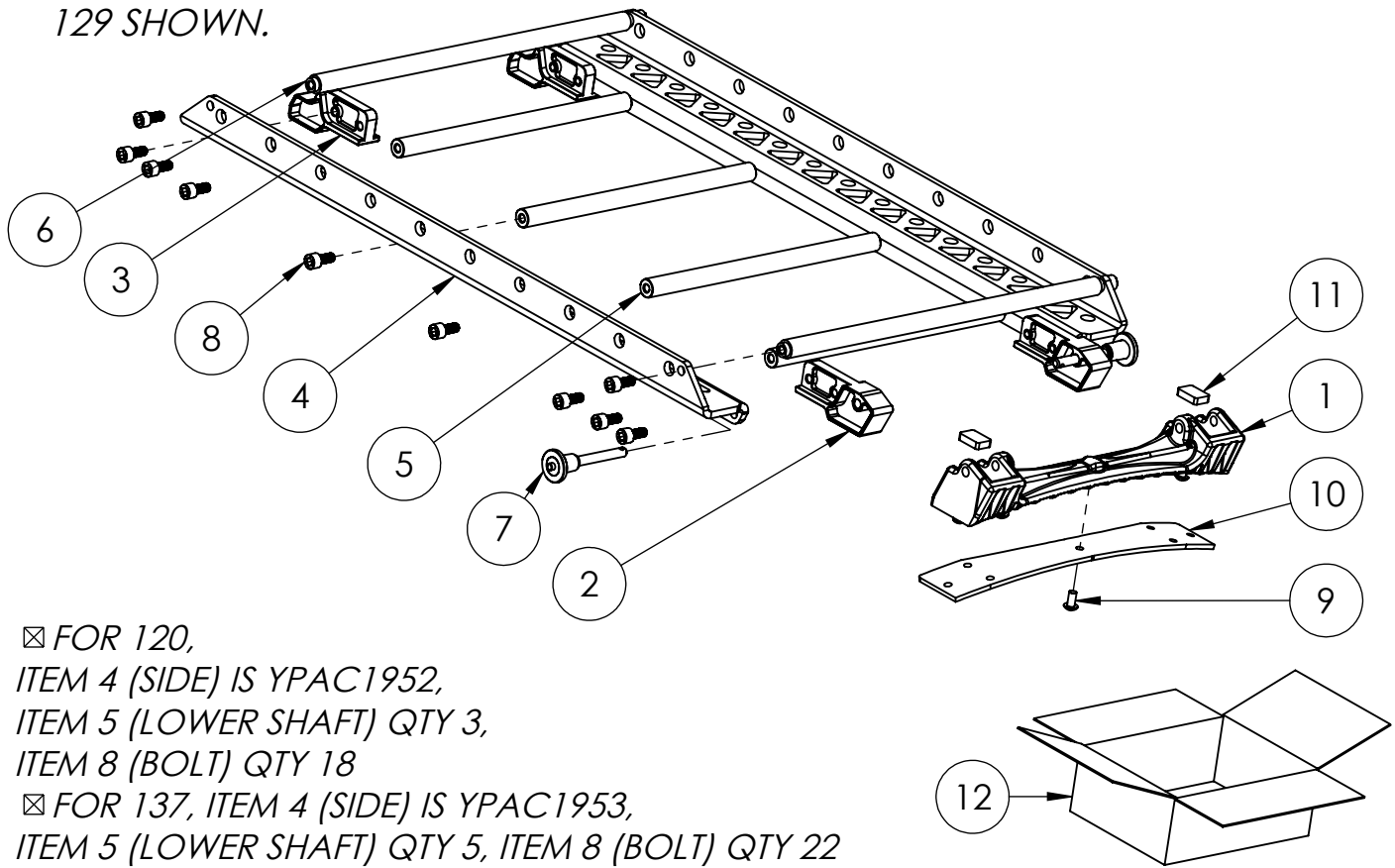
2

1

2

1

129 SHOWN.



☒ FOR 120,  
 ITEM 4 (SIDE) IS YPAC1952,  
 ITEM 5 (LOWER SHAFT) QTY 3,  
 ITEM 8 (BOLT) QTY 18  
 ☒ FOR 137, ITEM 4 (SIDE) IS YPAC1953,  
 ITEM 5 (LOWER SHAFT) QTY 5, ITEM 8 (BOLT) QTY 22

BOM Table

ITEM NO.	PART NUMBER	DESCRIPTION	QTY.
1	YPAC1666D6	MOUNT, REAR CARGO RACK	1
2	YPAC2230D4	BRACKET, REAR CARGO MOUNT	2
3	YPAC2229D4	BRACKET, FRONT CARGO MOUNT	2
4	YPAC1949D6	PLATE, 129" CARGO RACK	2
5	YPAC1950D1	SHAFT, CARGO RACK, LOWER	4
6	YPAC1951D2	SHAFT, CARGO RACK, UPPER	2
7	YPAC1753D1	PIN, QUICK, BUTTON HANDLE, 1.5" GRIP, .25" DIA	2
8	YPHW2298LB	BOLT, M6-1.0 X 14mm, SOCKET HEAD 5mm DRIVE, Ti	20
9	YPHW2302LB	BOLT, M5-0.8 X 10MM BUTTON HEAD SOCKET CAP A4 S/S	7
10	YPAC1734D2	FOAM, YPAC1666 CARGO MOUNT	1
11	YPAC1713D2	FOAM, CARGO PADS	2
12	YPBX2609	Box, Rack, 42.5x3.75x2.25	1

## CARGO, RACK, 129 YETI ASSEMBLY COMPLETE

## C3 POWERSPORTS 2014 LTD

#1 - 17 RENAULT CRESENT,  
 ST. ALBERT, AB. T8N 4B7  
 PH 780 419-2040 / 888 267-5554 www.c3powersports.com

## PROPRIETARY AND CONFIDENTIAL

THE INFORMATION CONTAINED IN THIS DRAWING IS THE SOLE PROPERTY OF C3  
 POWERSPORTS 2014 LTD. ANY REPRODUCTION IN PART OR AS A WHOLE WITHOUT THE  
 WRITTEN PERMISSION OF C3 POWERSPORTS 2014 LTD IS PROHIBITED.



DWG. NO.

YAAC2268D2

REV.

DATE

NOV 20-2016

WEIGHT:

2

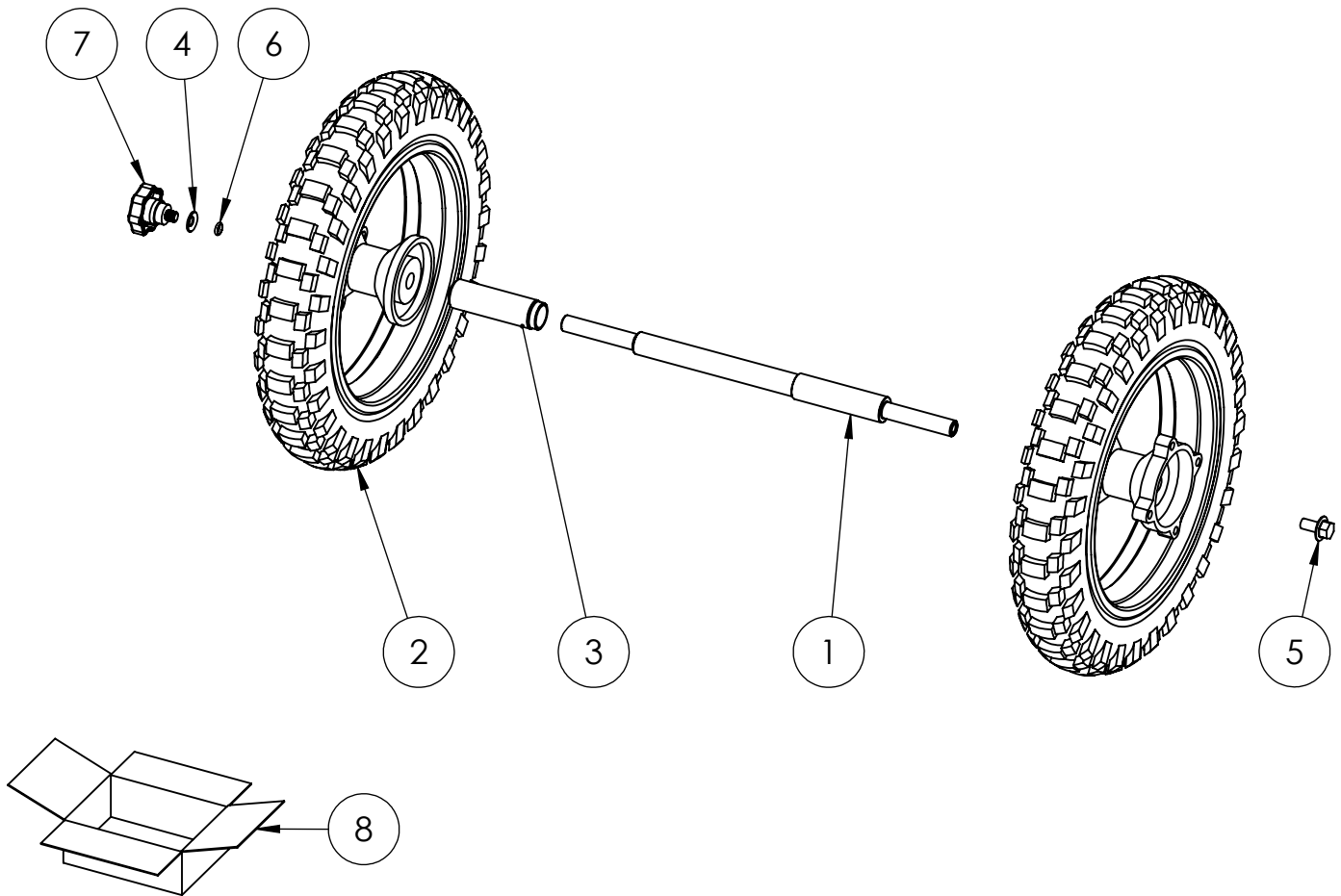
1

2

1

B

B



A

A

ITEM NO.	PART NUMBER	DESCRIPTION	QTY.
1	YPAC1242	FREEWHEEL AXLE, MACHINED, IMPERIAL	1
2	YPAC1146	WHEEL, 10 INCH	2
3	YPAC1587	SPACER, FREEWHEEL AXLE	1
4	YPHW1651	BELLEVILLE WASHER 20MMOD X 10.2MM ID X 1.5MM TH	1
5	YPHW1419	BOLT, M10-1.5 X 20MM FLANGE BOLT 10.9 ZINC FOR FREEWHEEL	1
6	YPHW1661	O-RING, #011 - FOR FREEWHEEL	1
7	YPHW1420	STAR GRIP BOLT M10-1.5	1
8	YPBX2607	Box, Freewheel, 32.25x17x3.75	1

## FREEWHEEL KIT, YETI

### C3 POWERSPORTS 2014 LTD

#1 - 17 RENAULT CRESENT,  
ST. ALBERT, AB. T8N 4B7  
PH 780 419-2040 888 267-5554 www.c3powersports.com

#### PROPRIETARY AND CONFIDENTIAL

THE INFORMATION CONTAINED IN THIS DRAWING IS THE SOLE PROPERTY OF C3 POWERSPORTS 2014 LTD. ANY REPRODUCTION IN PART OR AS A WHOLE WITHOUT THE WRITTEN PERMISSION OF C3 POWERSPORTS 2014 LTD IS PROHIBITED.



DWG. NO.

YAAC1281 D2

REV.

DATE

AUG 28-2015

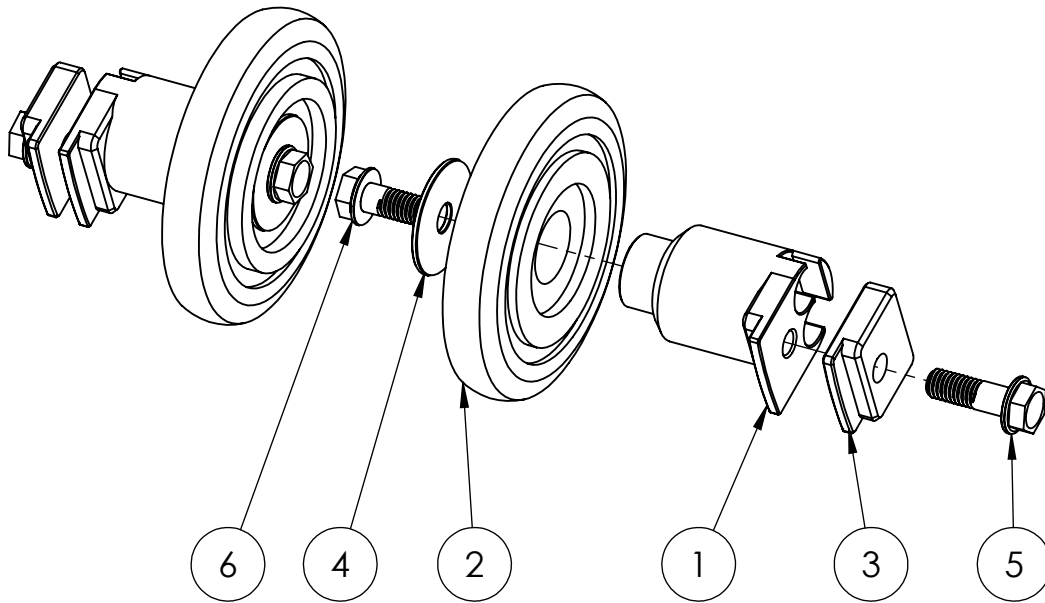
WEIGHT:

2

1

2

1



ITEM NO.	PART NUMBER	DESCRIPTION	QTY.
1	YPSU1857D2	MOUNT, 3.375" RAIL WHEEL	2
2	YPSU1217	WHEEL, 3.35" OD, 20MM ID BEARING	2
3	YPSU1729D1	WASHER, 3.375" RAIL WHEEL	2
4	YPHW2153	Washer, 5/16, 1.25 OD, .062 Thick	2
5	YPHW1897LBD1	BOLT, M8-1.25 X 25mm, FLANGE HEAD 12mm HEX DRIVE, Ti, Loctite Blue	2
6	YPHW1003LBD1	BOLT, M8-1.25 X 16mm, FLANGE HEAD 12mm HEX DRIVE, Ti	2

## BOGIE WHEEL KIT (PAIR)

### C3 POWERSPORTS 2014 LTD

#1 - 17 RENAULT CRESENT,  
ST. ALBERT, AB. T8N 4B7  
PH 780 419-2040 888 267-5554 www.c3powersports.com

#### PROPRIETARY AND CONFIDENTIAL

THE INFORMATION CONTAINED IN THIS DRAWING IS THE SOLE PROPERTY OF C3 POWERSPORTS 2014 LTD. ANY REPRODUCTION IN PART OR AS A WHOLE WITHOUT THE WRITTEN PERMISSION OF C3 POWERSPORTS 2014 LTD IS PROHIBITED.



DWG. NO.

YAAC1859 D1

REV.

DATE

AUG 28-2017

WEIGHT:

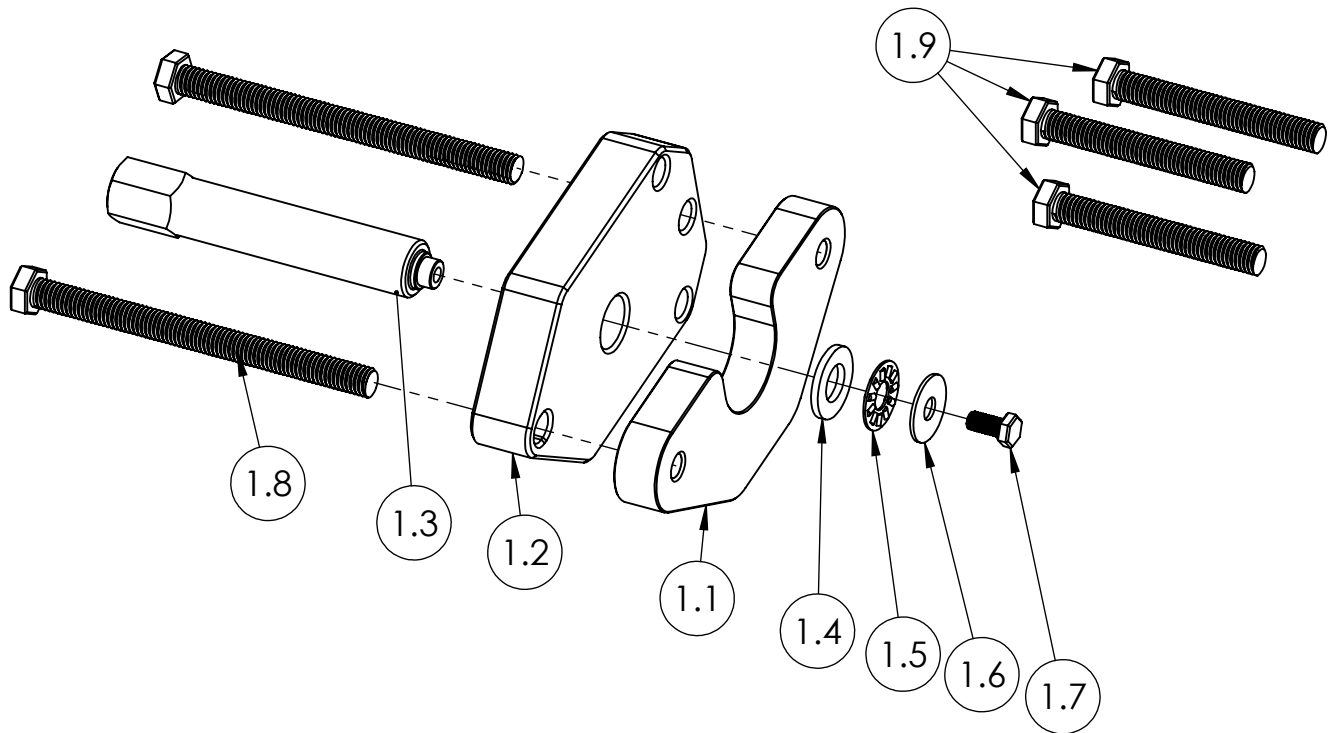
2

1

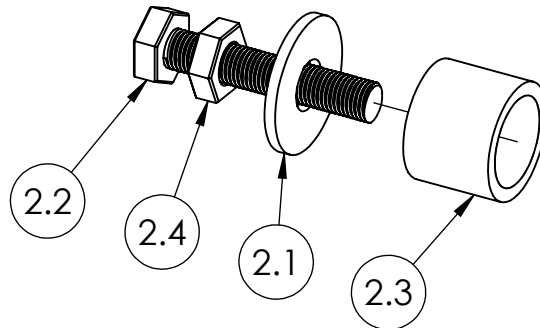
2

1

## 1: YAAC1785 BEARING PUSH TOOL



## 2: YAAC1945 SHAFT INSTALL TOOL



## Tool Kit, Jack Shaft / Bearing Tool KIT

**C3 POWERSPORTS 2014 LTD**

#1 - 17 RENAULT CRESENT,  
ST. ALBERT, AB. T8N 4B7  
PH 780 419-2040 888 267-5554 www.c3powersports.com

## PROPRIETARY AND CONFIDENTIAL

THE INFORMATION CONTAINED IN THIS DRAWING IS THE SOLE PROPERTY OF C3 POWERSPORTS 2014 LTD. ANY REPRODUCTION IN PART OR AS A WHOLE WITHOUT THE WRITTEN PERMISSION OF C3 POWERSPORTS 2014 LTD IS PROHIBITED.



DWG. NO.

REV.

YAAC1946 D1

DATE OCT 4 2017

WEIGHT:

2

1

2

1

ITEM NO.	PART NUMBER	DESCRIPTION	QTY.
1	YAAC1785	Tool, Bearing Puller Assembly	1
1.1	YPAC1850D1	TOOL, BEARING PULL PLATE	1
1.2	YPAC1232D4	Tool, Shaft Removal	1
1.3	YPAC1234D8	TOOL, SHAFT REMOVAL BOLT	1
1.4	YPHW1570	WASHER, M10X20X2, YLZN	1
1.5	YPHW2411	Bearing, Thrust Needle Roller, 5/16 X 3/4 X 5/64"	1
1.6	YPHW2415	Washer, 1/4" X .734 Yellow Zinc	1
1.7	YPHW2416	Bolt, M5-.08 X 10mm YL Zc Full Thread	1
1.8	YPHW1938	Bolt, M8X1.25 100mm, Class 8.8 Zinc	2
1.9	YPHW1939	Bolt, M8X1.25 60mm, Class 8.8 Zinc	3

2	YAAC1945	Tool, Shaft Install Tool Assembly	1
2.1	YPHW1943	Washer, 1/2" Fender 1/8" Thick	1
2.2	YPHW1942	Bolt, M12X1.25 - 60mm Z	1
2.3	YPHW1936D1	Collar, Install Tool Alu Sch 40 1.0" ID .15 Wall 1" Long	1
2.4	YPHW1944	NUT, M12-1.25 ZINC	1

### Tool Kit, Jack Shaft / Bearing Tool KIT

#### C3 POWERSPORTS 2014 LTD

#1 - 17 RENAULT CRESENT,  
ST. ALBERT, AB. T8N 4B7  
PH 780 419-2040 888 267-5554 www.c3powersports.com

#### PROPRIETARY AND CONFIDENTIAL

THE INFORMATION CONTAINED IN THIS DRAWING IS THE SOLE PROPERTY OF C3 POWERSPORTS 2014 LTD. ANY REPRODUCTION IN PART OR AS A WHOLE WITHOUT THE WRITTEN PERMISSION OF C3 POWERSPORTS 2014 LTD IS PROHIBITED.



DWG. NO.

REV.

YAAC1946 D1

DATE

OCT 4 2017

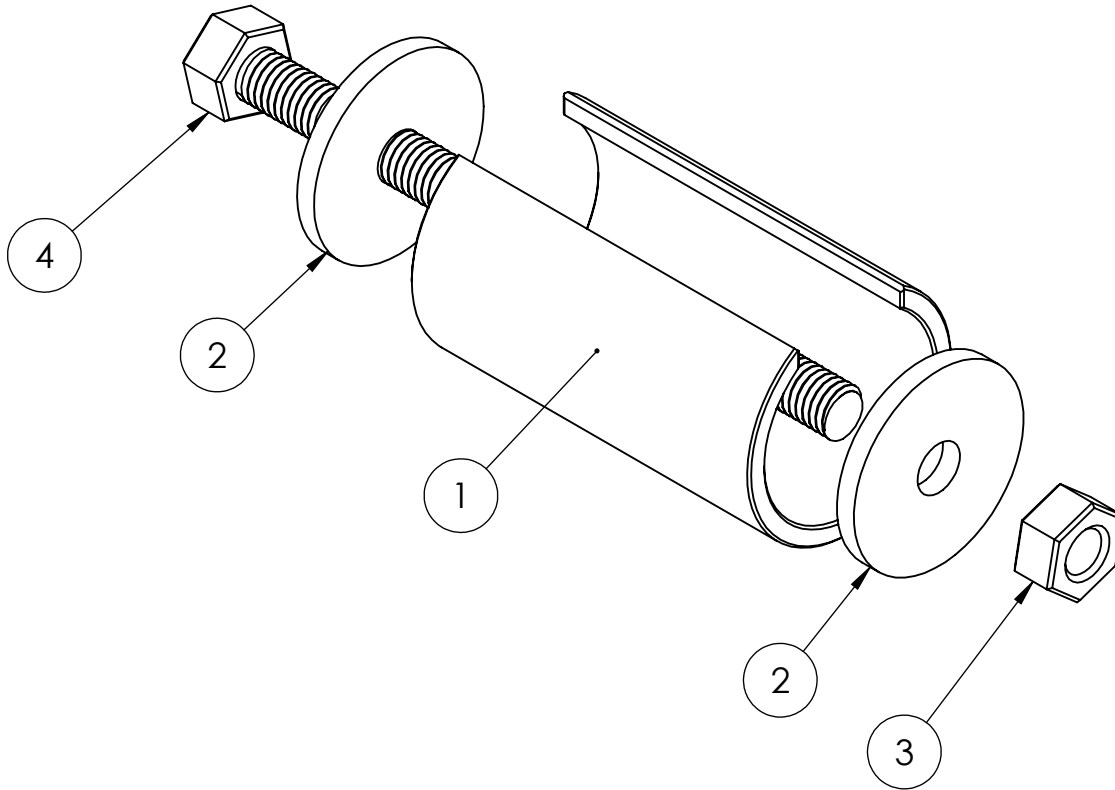
WEIGHT:

2

1

2

1



ITEM NO.	PART NUMBER	DESCRIPTION	QTY
1	YPHW1968D2	TOOL, BUSHING, BIKE MOUNT INSTALL AND REMOVE	1
2	YPHW1978	Washer, Fender 5/16 - M8, .125 Thick	2
3	YPHW1688	NUT, M8-1.25 ZINC	1
4	YPHW1709	BOLT, M8-1.25 X 110MM FULL THREAD	1

TOOL, BIKE MOUNT INSTALL TOOL WORKS W/2.1 & 2.2 PLATES

### C3 POWERSPORTS 2014 LTD

#1 - 17 RENAULT CRESENT,  
ST. ALBERT, AB. T8N 4B7  
PH 780 419-2040 888 267-5554 www.c3powersports.com

#### PROPRIETARY AND CONFIDENTIAL

THE INFORMATION CONTAINED IN THIS DRAWING IS THE SOLE PROPERTY OF C3 POWERSPORTS 2014 LTD. ANY REPRODUCTION IN PART OR AS A WHOLE WITHOUT THE WRITTEN PERMISSION OF C3 POWERSPORTS 2014 LTD IS PROHIBITED.



DWG. NO.

REV.

YAAC1986 D1

DATE OCT 4 2017

WEIGHT:

2

1