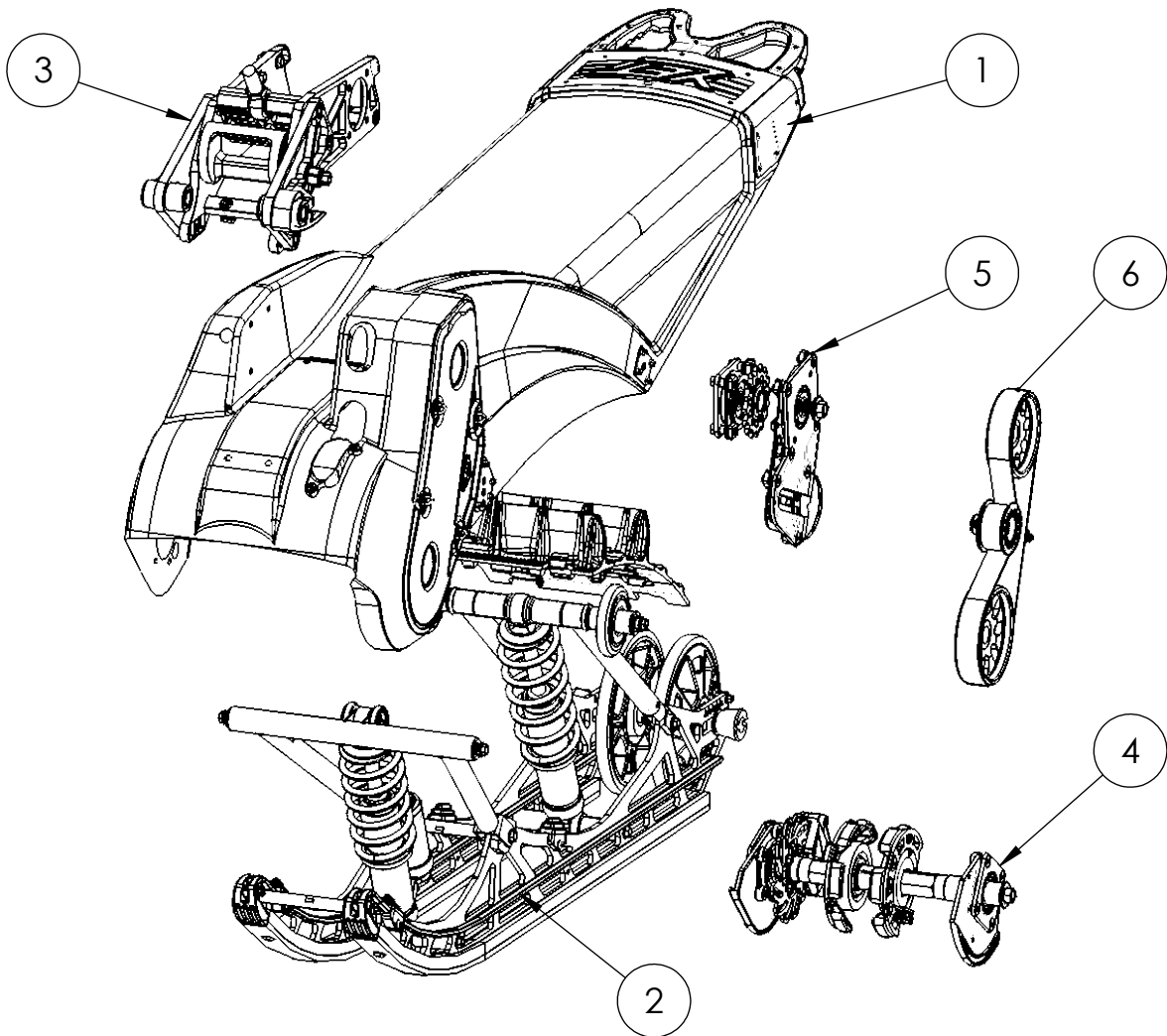


B

A

B

A



ITEM NO.	PART NUMBER	DESCRIPTION	QTY.
1	YACH2070D2	CHASSIS ASSEMBLY, 129 SS	1
2	YASU2440D2	SUSPENSION ASSEMBLY, 129", SS	1
3	YABM1809D4	BIKE MOUNT ASSEMBLY	1
4	YADR2496D2	DRIVE SHAFT ASSEMBLY, SS	1
5	YADR2497D1	JACK SHAFT ASSEMBLY, SS	1
6	YADR1853D1	SyncroDrive ASSEMBLY	1

YETI REAR ASSEMBLY, 129 SS

C3 POWERSPORTS 2014 LTD

#1 - 17 RENAULT CRESENT,
ST. ALBERT, AB. T8N 4B7
PH 780 419-2040 888 267-5554 www.c3powersports.com

PROPRIETARY AND CONFIDENTIAL

THE INFORMATION CONTAINED IN THIS DRAWING IS THE SOLE PROPERTY OF C3 POWERSPORTS 2014 LTD. ANY REPRODUCTION IN PART OR AS A WHOLE WITHOUT THE WRITTEN PERMISSION OF C3 POWERSPORTS 2014 LTD IS PROHIBITED.



DWG. NO.

YARA2499

REV.

DATE

AUG 23 2017

WEIGHT:

2

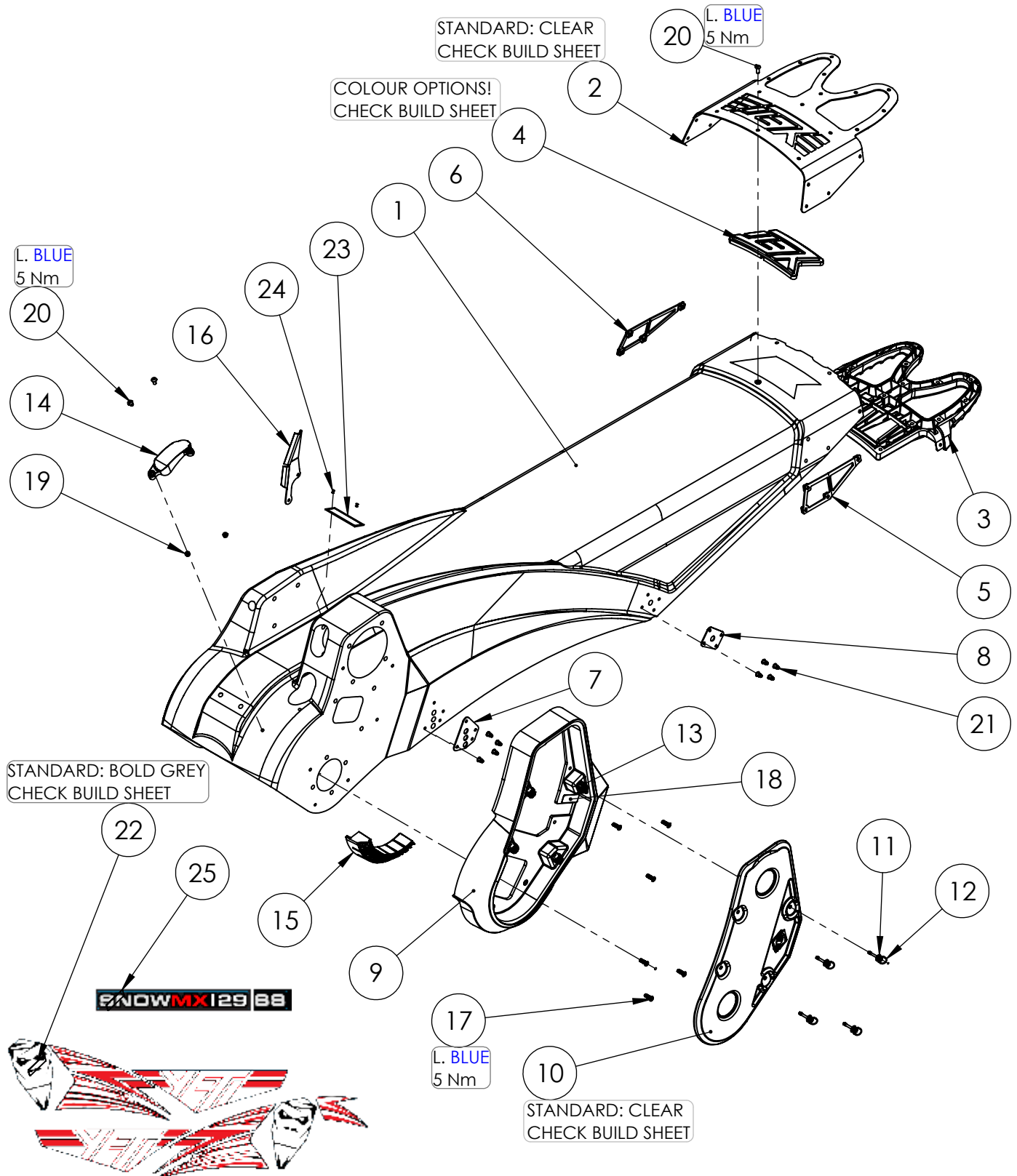
1

B

B

A

A



CHASSIS ASSEMBLY, 129, SS

C3 POWERSPORTS 2014 LTD

#1 - 17 RENAULT CRESENT,
ST. ALBERT, AB. T8N 4B7
PH 780 419-2040 888 267-5554 www.c3powersports.com

PROPRIETARY AND CONFIDENTIAL

THE INFORMATION CONTAINED IN THIS DRAWING IS THE SOLE PROPERTY OF C3
POWERSPORTS 2014 LTD. ANY REPRODUCTION IN PART OR AS A WHOLE WITHOUT THE
WRITTEN PERMISSION OF C3 POWERSPORTS 2014 LTD IS PROHIBITED.



DWG. NO.

REV.

YACH2070 D2

DATE

OCT 17 2017

WEIGHT: 5.213

2

1

ITEM NO.	PART NUMBER	DESCRIPTION	QTY.
1	YPCH2570D1.3	Chassis, 129, SS	1
2	YPCH2300CLD2	BUMPER, FORMED PLATE, SS	1
3	YPCH2301D1.5	Bumper, Molded Handle, SS	1
4	YPCH1179D1	BUMPER, YETI SILICONE INSERT, BLACK	1
5	YPCH1925D3	NUT PLATE, BUMPER, LH, STEEL	1
6	YPCH1926D3	NUT PLATE, BUMPER, RH, STEEL	1
7	YPCH2553D1	SUSPENSION MOUNT PLATE, FRONT, 3 HOLE	2
8	YPCH2554D1	SUSPENSION MOUNT PLATE, 10MM HOLE, REAR	2
9	YPCH1776SSD11	DEFECTOR, SyncroDrive, MACHINED FOR SS	1
10	YPCH1107CLD7	COVER, POLYCARBONATE SYNCRODRIVE CLEAR	1
11	YPHW1586	1/4 TURN FASTENER PUSH ON RETAINER S/S	4
12	YPHW1676	DZUS, 1/4 TURN FASTENER, 27MM	4
13	YPHW1348	RECEPTICLE, 1/4 TURN, DZUS	4
14	YPCH1578D13	CHAIN SLIDER, CHASSIS	1
15	YPCH1618D3	DEFLECTOR DAMPENER, SILICONE	1
16	YPCH1159D3	BRAKE LINE PROTECTOR, FORMED, SS	1
17	YPHW1769LBD1	SCREW, M5-.8 X 16MM, ULTRA LOW HEAD HEX SOCKET	6
18	YPCH1643D1	DECAL, SYNCRODRIVE INSTRUCTIONS	1
19	YPCH1598	THREADED INSERT, M5 X 9.4MM STL PLATED ZINC	2
20	YPHW1573LB	BOLT, M5-0.8 X 12MM BUTTON HEAD SOCKET CAP A4 S/S	26
21	YPHW2578	RIVET, 3/16 S/S GRIP RANGE .236-.335"	16
22	YPDC9547BGY	DECAL PKG 2018 129	1
23	YPCH2629	SERIAL NUMBER PLATE	1
24	YPHW1336	1/8" X 1/8" S/S Pop Rivet	2
25	YPDC9556	DECAL, "YETISNOWMX129SS"	2

129SS SHOWN.

FOR 120SS, ITEM 1 (CHASSIS) IS YPCH2299 & ITEM 22 (DECAL) IS YPDC9545BGY

CHASSIS ASSEMBLY, 129, SS

C3 POWERSPORTS 2014 LTD

#1 - 17 RENAULT CRESENT,
ST. ALBERT, AB. T8N 4B7
PH 780 419-2040 888 267-5554 www.c3powersports.com

PROPRIETARY AND CONFIDENTIAL

THE INFORMATION CONTAINED IN THIS DRAWING IS THE SOLE PROPERTY OF C3 POWERSPORTS 2014 LTD. ANY REPRODUCTION IN PART OR AS A WHOLE WITHOUT THE WRITTEN PERMISSION OF C3 POWERSPORTS 2014 LTD IS PROHIBITED.



DWG. NO.

REV.

YACH2070 D2

DATE

OCT 17 2017

WEIGHT: 5.213

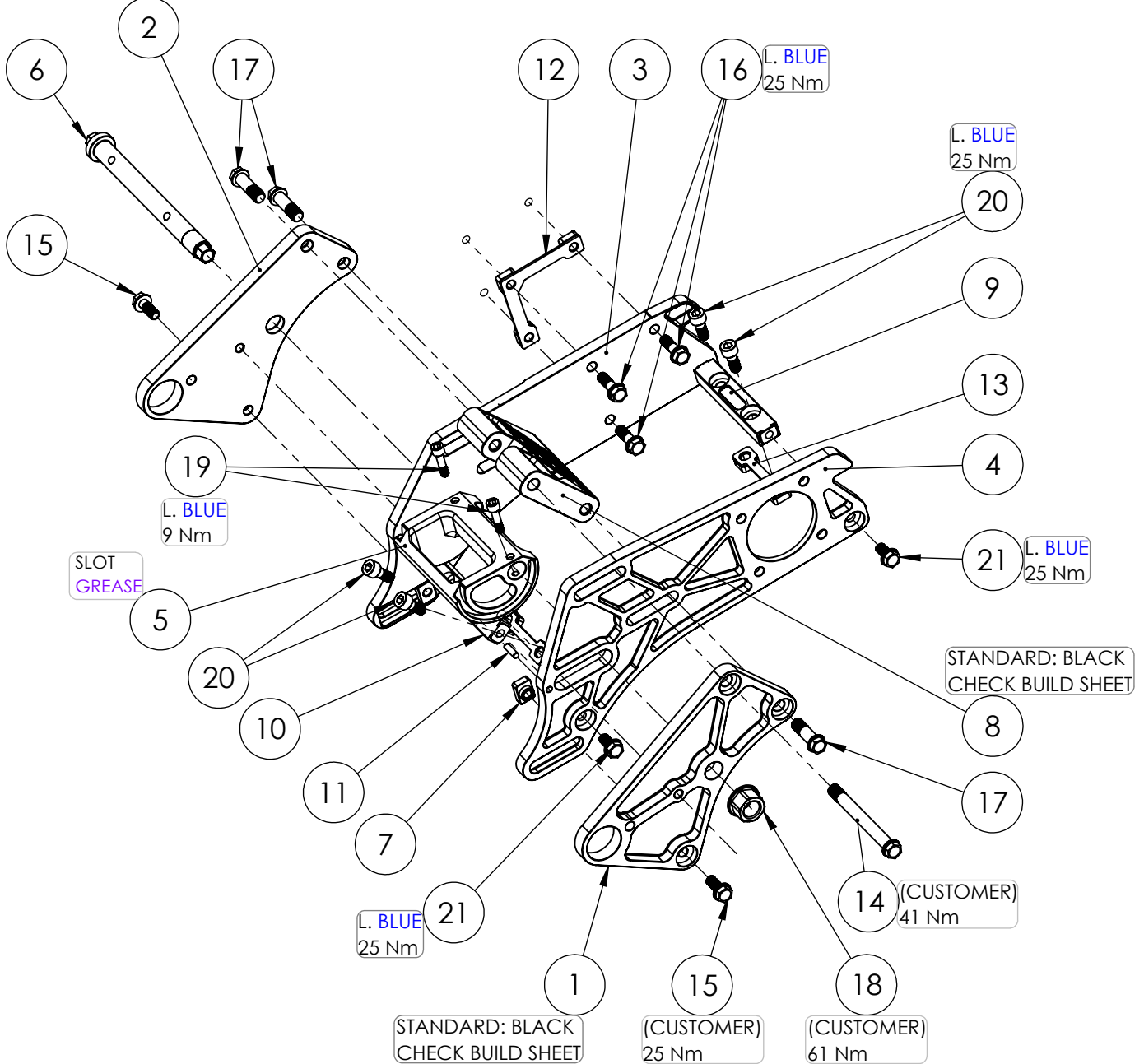
2

1

STANDARD: BLACK
CHECK BUILD SHEET

B

B



A

A

BIKE MOUNT ASSEMBLY

C3 POWERSPORTS 2014 LTD

#1 - 17 RENAULT CRESENT,
ST. ALBERT, AB. T8N 4B7
PH 780 419-2040 888 267-5554 www.c3powersports.com

PROPRIETARY AND CONFIDENTIAL

THE INFORMATION CONTAINED IN THIS DRAWING IS THE SOLE PROPERTY OF C3 POWERSPORTS 2014 LTD. ANY REPRODUCTION IN PART OR AS A WHOLE WITHOUT THE WRITTEN PERMISSION OF C3 POWERSPORTS 2014 LTD IS PROHIBITED.



DWG. NO.

YABM1809 D6

REV.

DATE

AUG 23 2017

WEIGHT: 5.440

2

1

2

1

ITEM NO.	PART NUMBER	DESCRIPTION	QTY
1	YPBM1833BKD4	BIKE MOUNT, SIDE PLATE 2.2, LH	1
2	YPBM1834BKD4	BIKE MOUNT, SIDE PLATE 2.2, RH	1
3	YPBM1832D3	PLATE, TUNNEL SIDE 2.2, RH	1
4	YPBM1831D3	PLATE, TUNNEL SIDE 2.2, LH	1
5	YPBM1137D8	ECCENTRIC CAM	1
6	YPHW1130D4	BOLT, ECCENTRIC CAM	1
7	YPHW1129D1	NUT, M8-1.25, T	2
8	YPBM1880BKD2	STRUT MOUNT BLOCK, M10	1
9	YPBM2172D1	CROSS BAR, TUNNEL SIDE PLATE, REAR, .060"	1
10	YPBM1108D6	CROSS BAR, TUNNEL SIDE PLATE	1
11	YPHW1712	Dowel Pin .1875 Dia x .75 Long	2
12	YPBM1924D3	NUT PLATE, TUNNEL PLATE, RH, STEEL	1
13	YPBM1920D3	NUT PLATE, CROSS BAR, STEEL	2
14	YPHW1035D1	BOLT, M10-1.25 x 95 FLANGE HEAD 12mm HEX DRIVE, LOWER ROD END, Ti	1
15	YPHW1001D1	BOLT, M8-1.25 X 20mm, FLANGE HEAD 12mm HEX DRIVE, Ti	2
16	YPHW1897LBD1	BOLT, M8-1.25 X 25mm, FLANGE HEAD 12mm HEX DRIVE, Ti	3
17	YPHW1895D1	BOLT, M10-1.25 X 32mm, FLANGE HEAD 12mm HEX DRIVE, Ti	3
18	YPBM1593D2	NUT, M16-1.5, 28.5mm DIA FLANGE, 22MM HEX	1
19	YPHW1012LBD1	BOLT, M6-1.0 X 25mm, SOCKET HEAD 5mm DRIVE, Ti	2
20	YPHW1009LBD1	BOLT, M8-1.25 X 20mm, SOCKET HEAD 6mm DRIVE, Ti	4
21	YPHW2628LBD1	BOLT, M8-1.25 X 16mm, FLANGE HEAD 12mm HEX DRIVE, 3mm Sholder, Ti	4

BIKE MOUNT ASSEMBLY

C3 POWERSPORTS 2014 LTD

#1 - 17 RENAULT CRESENT,
ST. ALBERT, AB. T8N 4B7
PH 780 419-2040 888 267-5554 www.c3powersports.com

PROPRIETARY AND CONFIDENTIAL

THE INFORMATION CONTAINED IN THIS DRAWING IS THE SOLE PROPERTY OF C3 POWERSPORTS 2014 LTD. ANY REPRODUCTION IN PART OR AS A WHOLE WITHOUT THE WRITTEN PERMISSION OF C3 POWERSPORTS 2014 LTD IS PROHIBITED.



DWG. NO.

REV.

YABM1809 D6

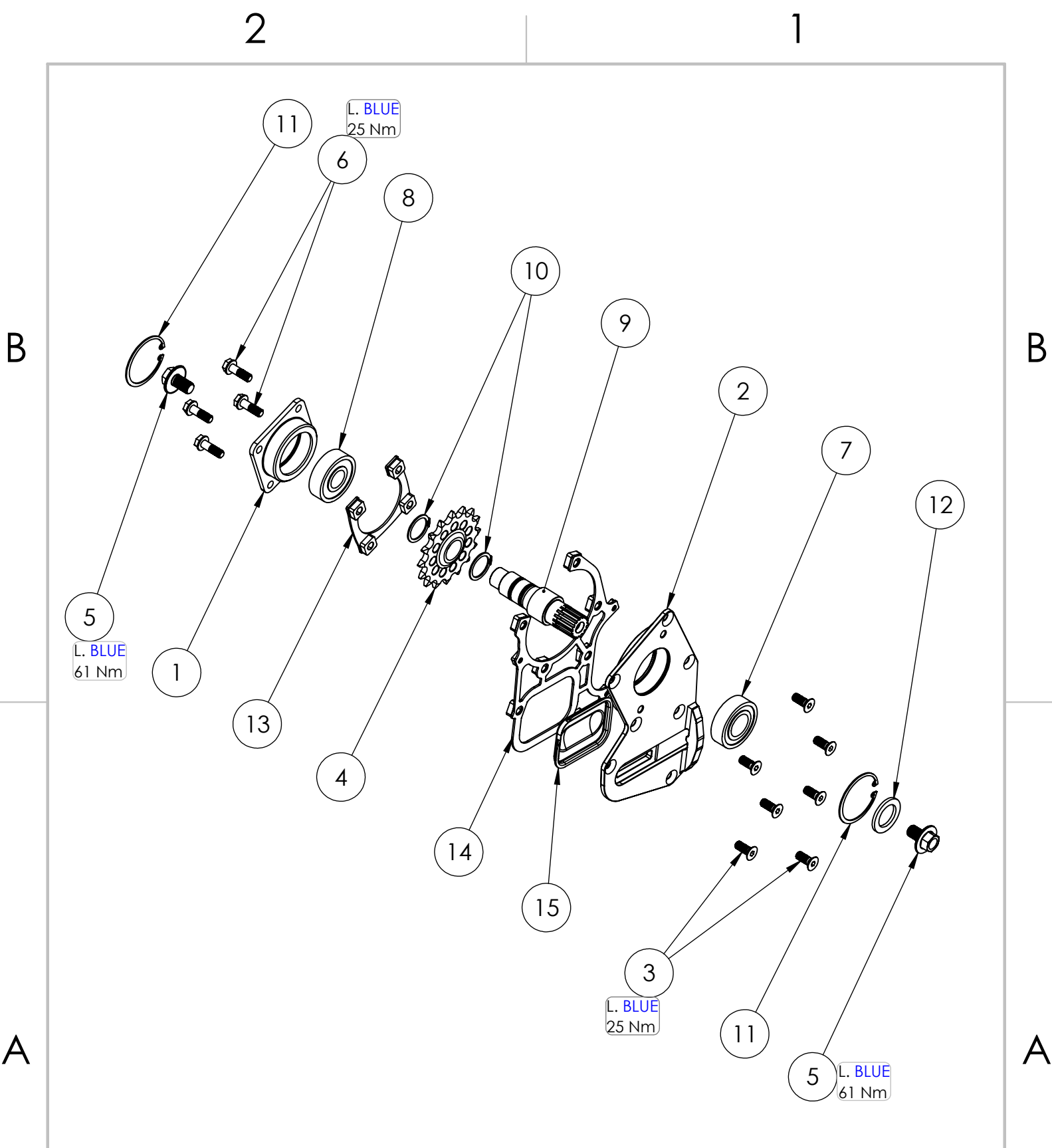
DATE

AUG 23 2017

WEIGHT: 5.440

2

1



JACK SHAFT ASSEMBLY, SS

C3 POWERSPORTS 2014 LTD

#1 - 17 RENAULT CRESENT,
ST. ALBERT, AB. T8N 4B7
PH 780 419-2040 888 267-5554 www.c3powersports.com

PROPRIETARY AND CONFIDENTIAL

THE INFORMATION CONTAINED IN THIS DRAWING IS THE SOLE PROPERTY OF C3 POWERSPORTS 2014 LTD. ANY REPRODUCTION IN PART OR AS A WHOLE WITHOUT THE WRITTEN PERMISSION OF C3 POWERSPORTS 2014 LTD IS PROHIBITED.



DWG. NO.

REV.

YADR2497 D1

DATE

JUNE 16 2017

WEIGHT: 3.797

2

1

ITEM NO.	PART NUMBER	DESCRIPTION	QTY.
1	YPDR1050D2	BEARING HOLDER, JACK SHAFT	1
2	YPDR1051D17	BEARING HOLDER, JACK SHAFT, DRIVE PLATE WITH TENSIONER SLOT	1
3	YPHW1048LBD1	BOLT, M8-1.25 X 20mm FLAT HEAD 5mm SOCKET DRIVE, Ti	7
4	YPDR2402D1	SPROCKET, 14 TOOTH, 520 CHAIN, 25.2mm X 15 SPLINE	1
5	YPHW1034LBD1	BOLT, M12-1.25 X 20mm, FLANGE HEAD SPRING, 17mm HEX DRIVE, Ti	2
6	YPHW1897LBD1	BOLT, M8-1.25 X 25mm, FLANGE HEAD 12mm HEX DRIVE, Ti	4
7	YPDR1260	BEARING, 6205, 25MM X 52MM X 15MM	1
8	YPDR1259	BEARING, 6304, 20MM X 52MM X 15MM	1
9	YPDR2362D1.1	JACK SHAFT, 1 INCH 15 OUTPUT SPLINE, 25.2MM INPUT SPLINE, NARROW STANCE, Ti	1
10	YPHW1657	SNAP RING , EXTERNAL 1" (RING#100)	2
11	YPHW1282	RING, INTERNAL SNAP, 2.00"	2
12	YPHW1057D1	WASHER, SHAFT GEAR SPACER, 1ID X 1.5OD X .125"TH	1
13	YPDR1923D3	NUT PLATE, TUNNEL PLATE, LH, STEEL	1
14	YPDR1818D2	NUT PLATE, DRIVE PLATE, STEEL	1
15	YPDR2110D2	COVER, TENSIONER BOLT	1

JACKSHAFT ASSEMBLY, SS

C3 POWERSPORTS 2014 LTD

#1 - 17 RENAULT CRESENT,
ST. ALBERT, AB. T8N 4B7
PH 780 419-2040 888 267-5554 www.c3powersports.com

PROPRIETARY AND CONFIDENTIAL

THE INFORMATION CONTAINED IN THIS DRAWING IS THE SOLE PROPERTY OF C3 POWERSPORTS 2014 LTD. ANY REPRODUCTION IN PART OR AS A WHOLE WITHOUT THE WRITTEN PERMISSION OF C3 POWERSPORTS 2014 LTD IS PROHIBITED.



DWG. NO.

REV.

YADR2497 D1

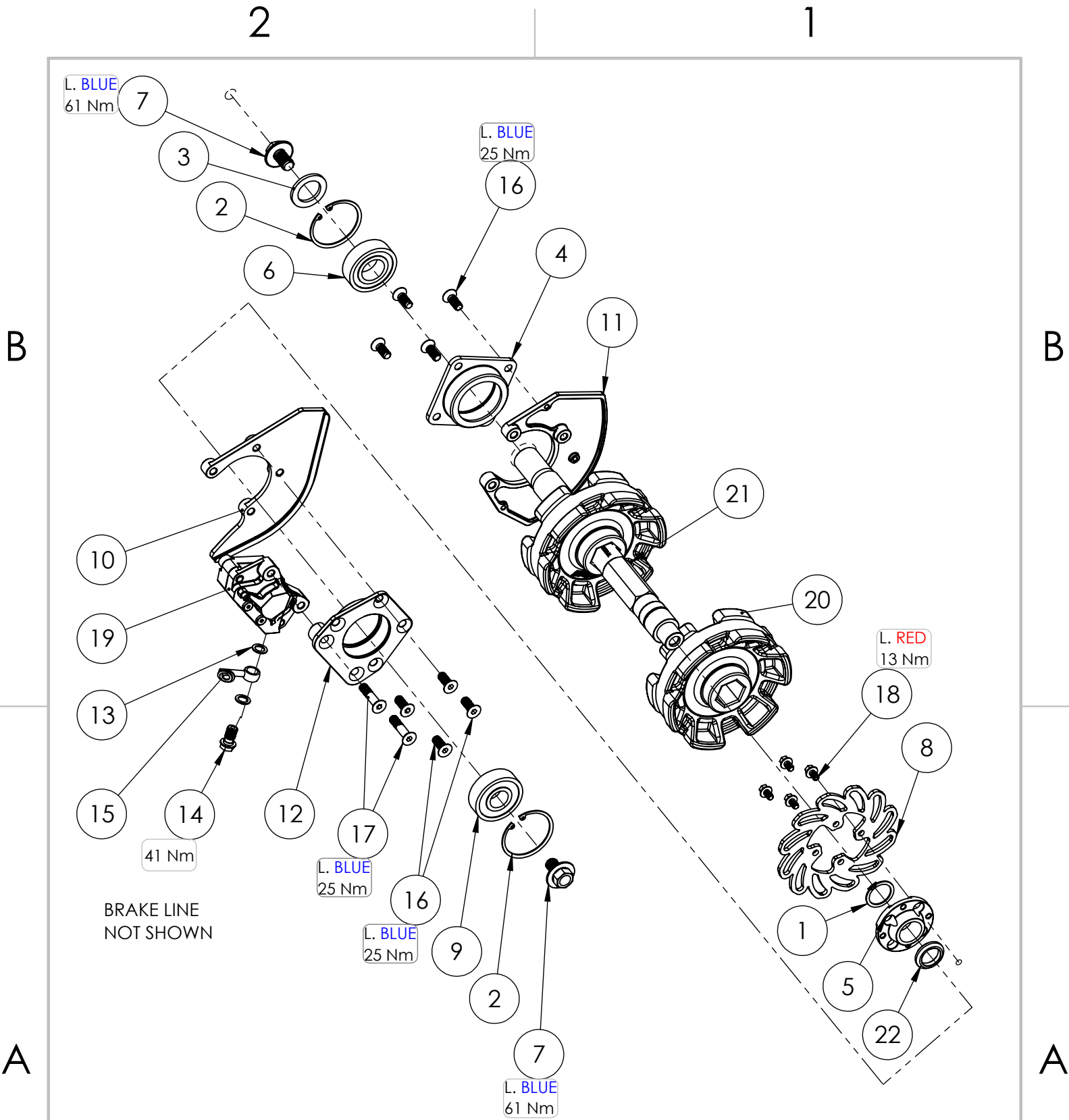
DATE

JUNE 16 2017

WEIGHT: 3.797

2

1



DRIVESHAFT ASSEMBLY, SS

C3 POWERSPORTS 2014 LTD

#1 - 17 RENAULT CRESENT,
ST. ALBERT, AB. T8N 4B7
PH 780 419-2040 888 267-5554 www.c3powersports.com

PROPRIETARY AND CONFIDENTIAL

THE INFORMATION CONTAINED IN THIS DRAWING IS THE SOLE PROPERTY OF C3 POWERSPORTS 2014 LTD. ANY REPRODUCTION IN PART OR AS A WHOLE WITHOUT THE WRITTEN PERMISSION OF C3 POWERSPORTS 2014 LTD IS PROHIBITED.



DWG. NO.

REV.

YADR2496 D2

DATE

OCT 16 2017

WEIGHT: 6.284

ITEM NO.	PART NUMBER	DESCRIPTION	QTY.
1	YPHW1342	RING, EXTERNAL SNAP, 1-1/16"	1
2	YPHW1282	RING, INTERNAL SNAP, 2.00"	2
3	YPHW1057D1	WASHER, SHAFT GEAR SPACER, 1ID X 1.5OD X .125"TH	1
4	YPDR1049D4	BEARING HOLDER, DRIVE SHAFT, LH	1
5	YPDR1976D1	HUB, BRAKE ROTOR, INTERLOCKING, 7075 ALUMINUM	1
6	YPDR1260	BEARING, 6205, 25MM X 52MM X 15MM	1
7	YPHW1034D1	BOLT, M12-1.25 X 20mm, FLANGE HEAD SPRING, 17mm HEX DRIVE, Ti	2
8	YPDR1781D8	BRAKE ROTOR, REDUCED SURFACE 2.0, 4 BOLT MOUNT, .150" TH	1
9	YPDR1259	BEARING, 6304, 20MM X 52MM X 15MM	1
10	YPDR1227D6	NUT PLATE, BRAKE	1
11	YPDR2109D1	NUT PLATE, DRIVE SHAFT, 1.1	1
12	YPDR1040D3	BEARING AND BRAKE HOLDER, WITH BRAKE MOUNT	1
13	YPDR1564	WASHER, BRAKE, COPPER	4
14	YPHW1844D1	BOLT, M10-1.25 X 18mm, BANJO, FLANGE HEAD 12mm HEX DRIVE, Ti	1
15	YPDR1349	80" Brake line - H692/0/H693 - Black line	1
16	YPHW1048LBD1	BOLT, M8-1.25 X 20mm FLAT HEAD 5mm SOCKET DRIVE, Ti	8
17	YPHW1036LBD1	BOLT, M8-1.25 X 35mm FLAT HEAD 5mm SOCKET DRIVE, Ti	2
18	YPHW2634LRD1	BOLT, M6-1.0 X 10mm, FLANGE HEAD 8mm HEX DRIVE, Ti	4
19	YADR2394D3	BRAKE CALIPER ASSEMBLY	1
20	YPDR2449D3.1	Driver, YETI 6 Tooth 2.86 Pitch Drive, 1 1/16" Hex	2
21	YPDR2318D4		1
22	YPDR2633D1	Spacer, Brake Hub, SS	1

129SS SHOWN.

FOR 120SS, ITEM 10 (DRIVERS) IS YPDR2450

DRIVESHAFT ASSEMBLY, SS

C3 POWERSPORTS 2014 LTD

#1 - 17 RENAULT CRESENT,
ST. ALBERT, AB. T8N 4B7
PH 780 419-2040 888 267-5554 www.c3powersports.com

PROPRIETARY AND CONFIDENTIAL

THE INFORMATION CONTAINED IN THIS DRAWING IS THE SOLE PROPERTY OF C3 POWERSPORTS 2014 LTD. ANY REPRODUCTION IN PART OR AS A WHOLE WITHOUT THE WRITTEN PERMISSION OF C3 POWERSPORTS 2014 LTD IS PROHIBITED.



DWG. NO.

REV.

YADR2496 D2

DATE

OCT 16 2017

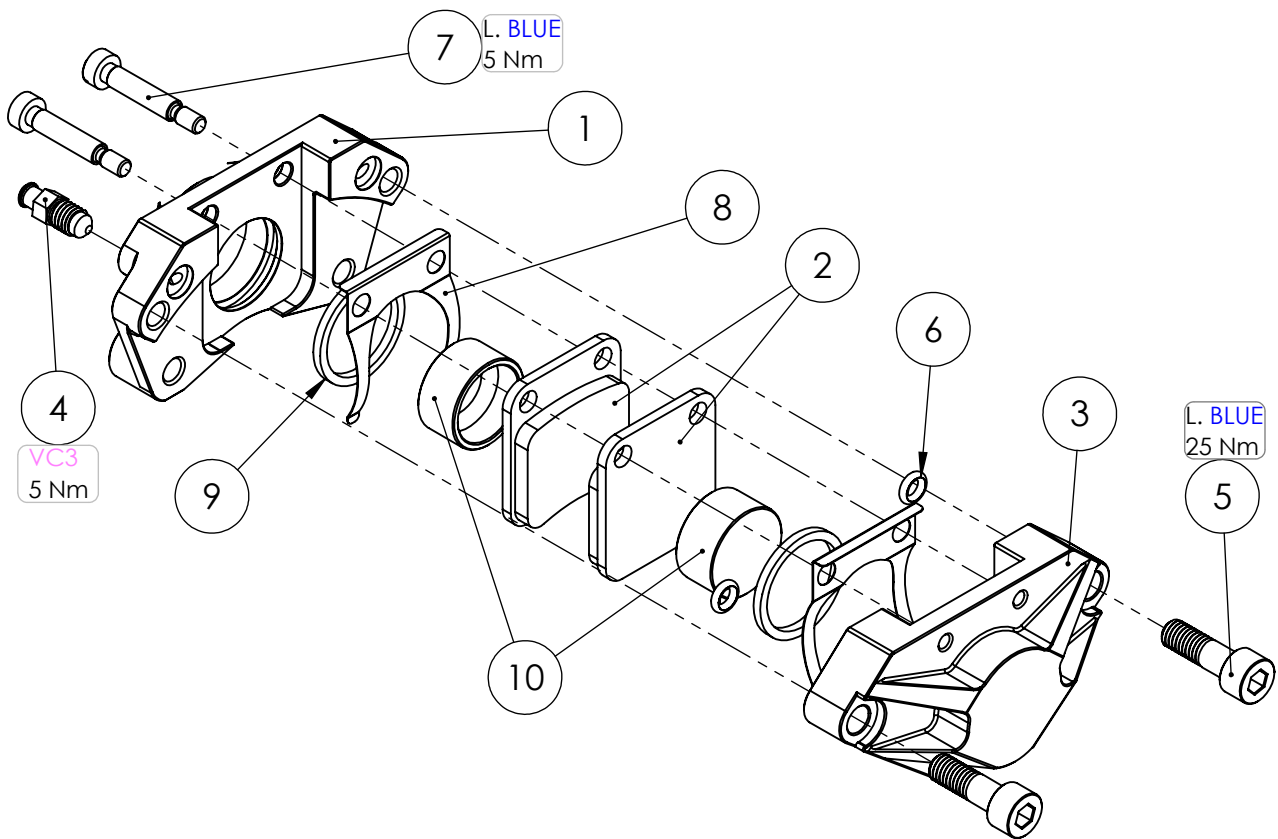
WEIGHT: 6.284

2

1

B

B



ITEM NO.	PART NUMBER	DESCRIPTION	QTY.
1	YPDR2390D3.5	CALIPER, MOUNTING HALF, 1.050" Piston	1
2	YPDR2395	Brake Pad, Square	2
3	YPDR2391D3.5	CALIPER, OUTER HALF, 1.050" Piston	1
4	YPDR2558	BLEEDER, BRAKE, M8-1.25	1
5	YPHW1008LBD1	BOLT, M8-1.25 X 25mm, SOCKET HEAD 6mm DRIVE, Ti	2
6	YPHW2398	Oring, #106, 3/16 ID X 3/32 C.S. X 3/8 OD	2
7	YPHW2397LB	BOLT, M5-.8 SHCS, 6MM X 25MM SHOULDER	2
8	YPDR2396D2.2	Spring, Brake Pad	2
9	YPHW2393	Oring, Brake Caliper Piston, #122 Epdm Square 70 Duro	2
10	YPDR2392D3	Caliper, Piston, 1.050" OD	2

A

A

BRAKE CALIPER ASSEMBLY

C3 POWERSPORTS 2014 LTD

#1 - 17 RENAULT CRESENT,
ST. ALBERT, AB. T8N 4B7
PH 780 419-2040 / 888 267-5554 www.c3powersports.com

PROPRIETARY AND CONFIDENTIAL
THE INFORMATION CONTAINED IN THIS DRAWING IS THE SOLE PROPERTY OF C3
POWERSPORTS 2014 LTD. ANY REPRODUCTION IN PART OR AS A WHOLE WITHOUT THE
WRITTEN PERMISSION OF C3 POWERSPORTS 2014 LTD IS PROHIBITED.



DWG. NO.

REV.

YADR2394 D3

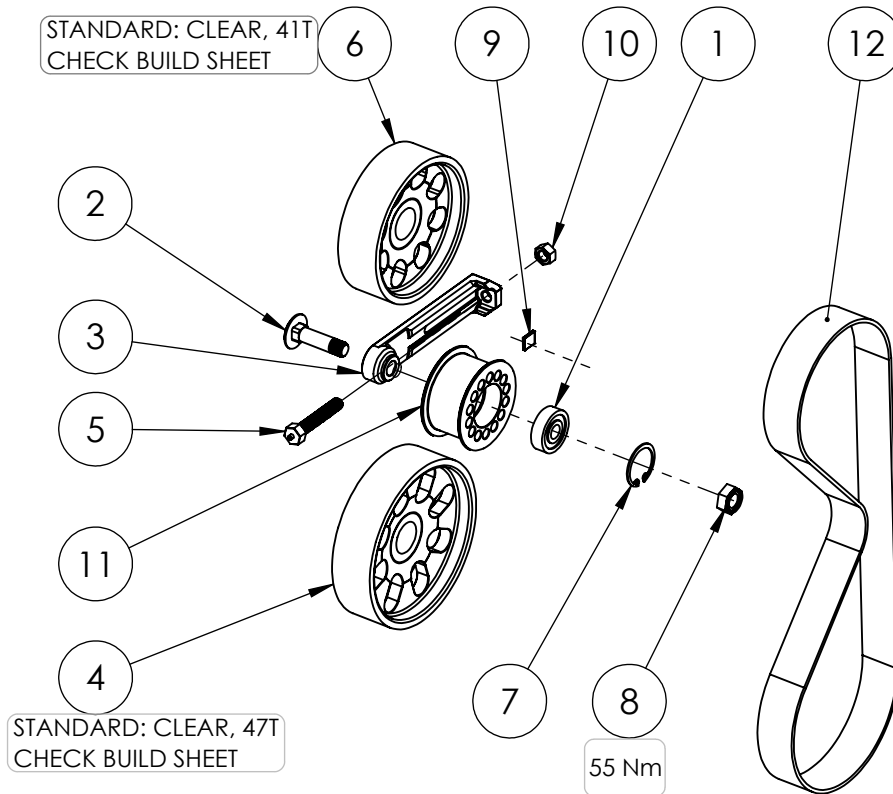
DATE

AUG 22 2017

WEIGHT:

2

1



ITEM NO.	PART NUMBER	DESCRIPTION	QTY.
1	YPDR1566	BEARING, 6200, 30MM OD X 10MM ID X 9MM WIDE	1
2	YPHW1591D1	BOLT, M10-1.25 x 45mm Carriage Bolt, Ti	1
3	YPDR1319D7	BELT TENSIONER ARM	1
4	YPDR2147CLD1	GEAR, 47 TOOTH, 28MM WIDE	1
5	YPHW1043D1	BOLT, M8-1.25 X 45mm, HEX HEAD 12mm HEX DRIVE, Ti	1
6	YPDR2141CLD1	GEAR, 41 TOOTH, 28MM WIDE	1
7	YPHW1418	RING, INTERNAL SNAP, 1-1/8 ID, FOR TENSIONER WHEEL	1
8	YPHW1059	NUT, M10-1.25, ALL METAL SELF LOCKING	1
9	YPDR1615D8	BELT DEFLECTION GAUGE	1
10	YPHW1760	NUT, M8-1.25 12MM HEX ZINC	1
11	YPDR1838D1	WHEEL, 2" IDLER FLANGED, 28MM WIDE	1
12	YPDR1792	BELT, 896MM LONG X 28MM WIDE, MITSUBOSHI GIGA TORQUE	1

2018 SYNCRODRIVE ASSEMBLY

C3 POWERSPORTS 2014 LTD

#1 - 17 RENAULT CRESENT,
ST. ALBERT, AB. T8N 4B7
PH 780 419-2040 888 267-5554 www.c3powersports.com

PROPRIETARY AND CONFIDENTIAL

THE INFORMATION CONTAINED IN THIS DRAWING IS THE SOLE PROPERTY OF C3 POWERSPORTS 2014 LTD. ANY REPRODUCTION IN PART OR AS A WHOLE WITHOUT THE WRITTEN PERMISSION OF C3 POWERSPORTS 2014 LTD IS PROHIBITED.



DWG. NO.

REV.

YADR1853 D1

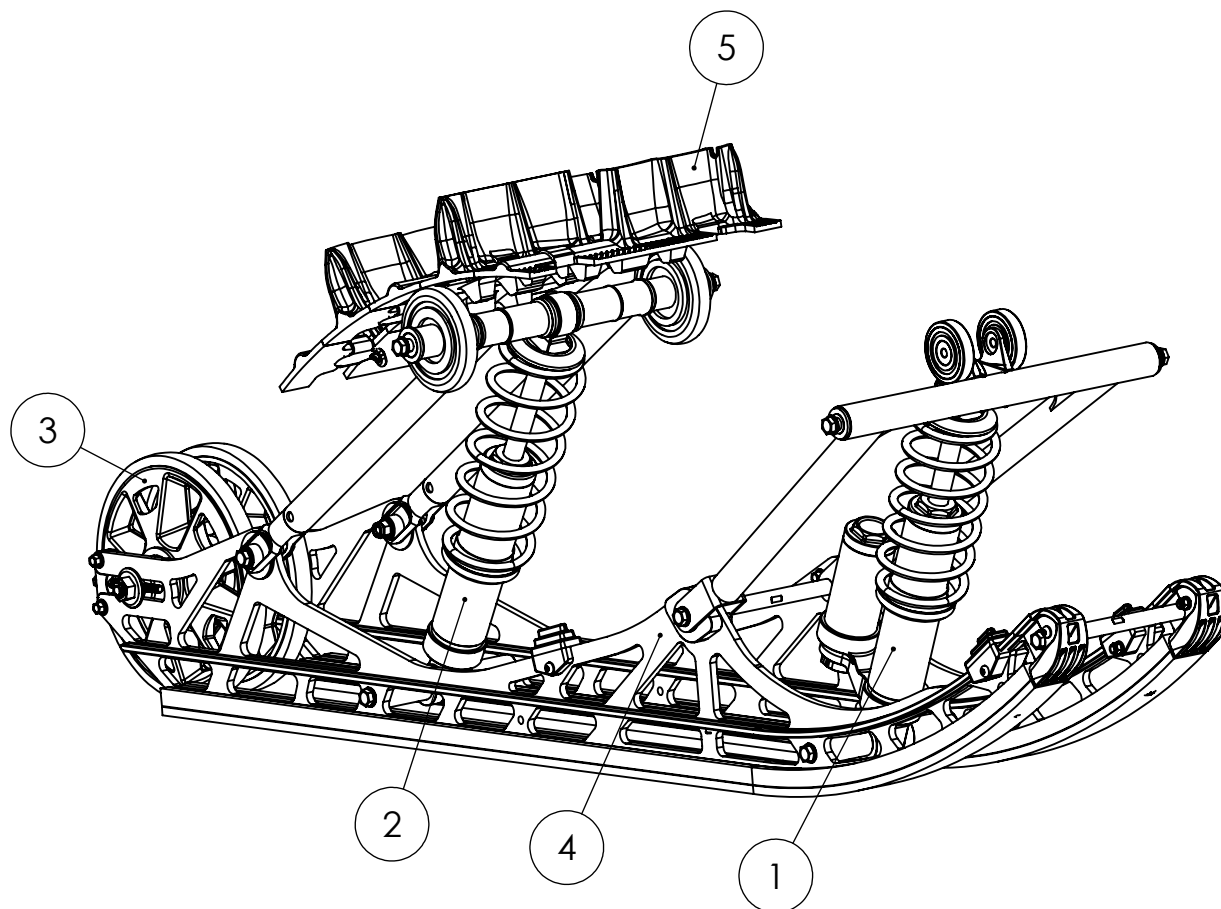
DATE

JUNE 20 2017

WEIGHT: 2.137

2

1



ITEM NO.	PART NUMBER	DESCRIPTION	QTY
1	YASU1927D4	SUSPENSION, FRONT ARM ASSEMBLY, SS, 5.5" WIDE OCL	1
2	YASU2442D2	2017 SUSPENSION, REAR ARM ASSEMBLY, NARROW	1
3	YASU2501D1	SUSPENSION, REAR AXLE ASSEMBLY, 5.5" OCL	1
4	YASU2160D1	SUSPENSION, RAIL ASSEMBLY, 129", LH, RH, INC FRONT CROSS SHAFT, 5.5" WIDE OCL	1
5	YPSU2492	Track, 129 Camso DTS 10"	1

SUSPENSION ASSEMBLY, 129 SS

C3 POWERSPORTS 2014 LTD

#1 - 17 RENAULT CRESENT,
ST. ALBERT, AB. T8N 4B7
PH 780 419-2040 / 888 267-5554 www.c3powersports.com

PROPRIETARY AND CONFIDENTIAL

THE INFORMATION CONTAINED IN THIS DRAWING IS THE SOLE PROPERTY OF C3 POWERSPORTS 2014 LTD. ANY REPRODUCTION IN PART OR AS A WHOLE WITHOUT THE WRITTEN PERMISSION OF C3 POWERSPORTS 2014 LTD IS PROHIBITED.



DWG. NO.

REV.

YASU2440 D2

DATE

AUG 23 2017

WEIGHT: 24.842

2

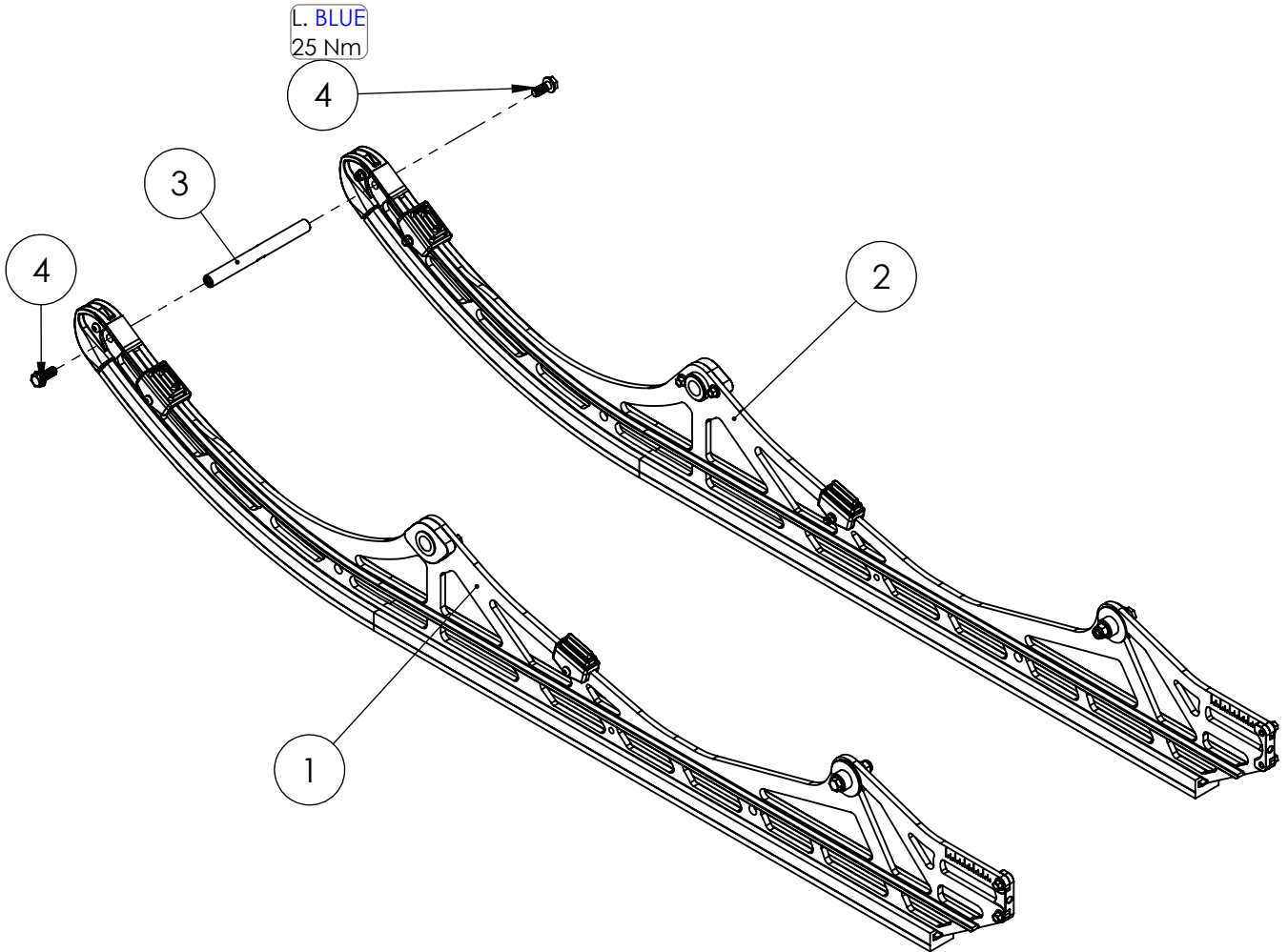
1

2

1

B

B



A

A

ITEM NO.	PART NUMBER	DESCRIPTION	QTY.
1	YASU1804D2LH	SUSPENSION, RAIL ASSEMBLY, 129", LH	1
2	YASU1804D2RH	SUSPENSION, RAIL ASSEMBLY, 129", RH	1
3	YPSU2441D2	Shaft, Rail Cross Ties, 5.5" OCL	1
4	YPHW1001LBD1	BOLT, M8-1.25 X 20mm, FLANGE HEAD 12mm HEX DRIVE, Ti	2

129SS SHOWN. RAIL SUBASSY'S DIFFERENT FOR 120SS.

SKID ASSEMBLY, SS

C3 POWERSPORTS 2014 LTD

#1 - 17 RENAULT CRESENT,
ST. ALBERT, AB. T8N 4B7
PH 780 419-2040 888 267-5554 www.c3powersports.com

PROPRIETARY AND CONFIDENTIAL

THE INFORMATION CONTAINED IN THIS DRAWING IS THE SOLE PROPERTY OF C3 POWERSPORTS 2014 LTD. ANY REPRODUCTION IN PART OR AS A WHOLE WITHOUT THE WRITTEN PERMISSION OF C3 POWERSPORTS 2014 LTD IS PROHIBITED.



DWG. NO.

YASU2160 D1

REV.

DATE

AUG 23 2017

WEIGHT: 10.772

2

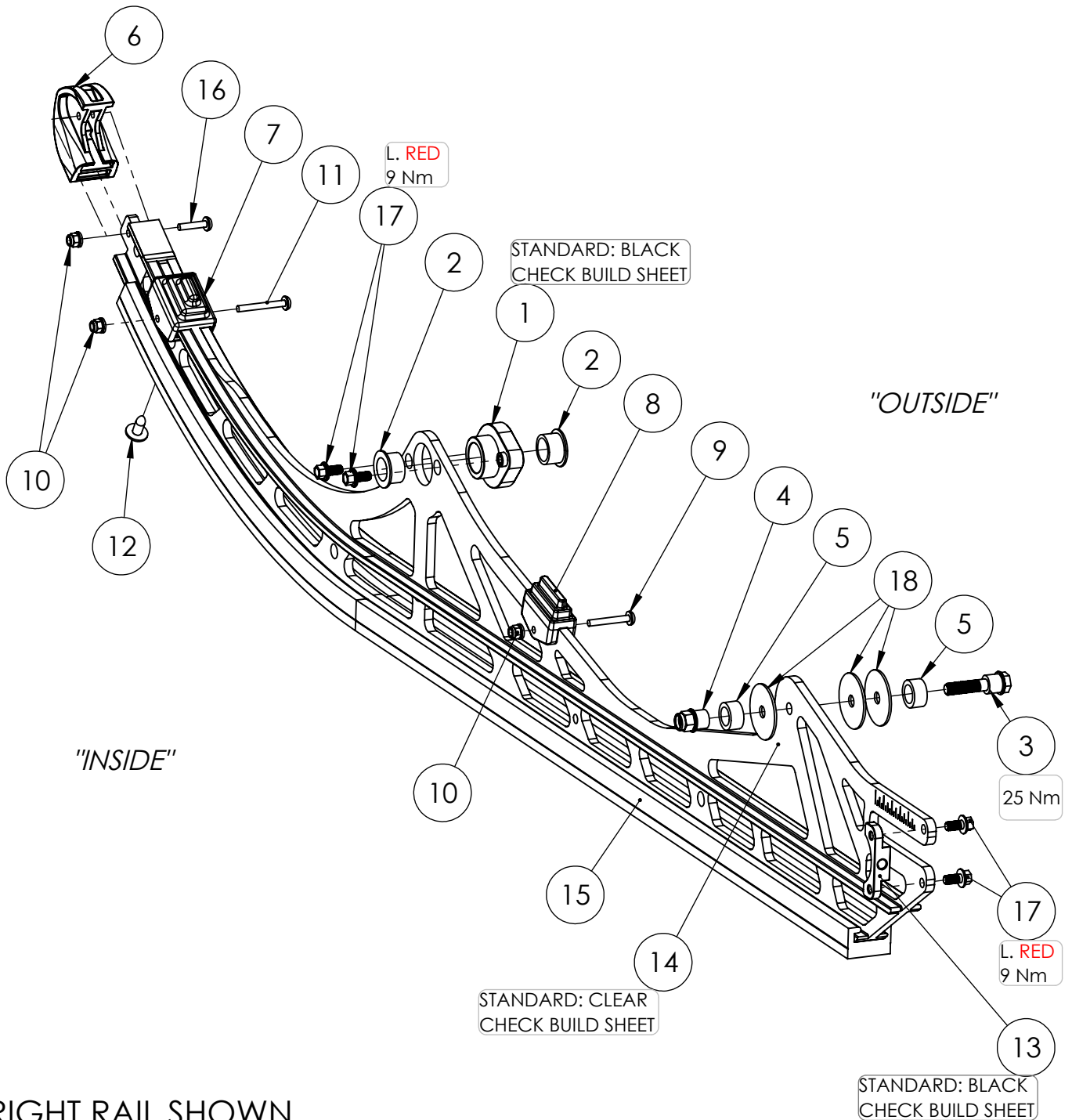
1

2

1

B

B



A

A

RIGHT RAIL SHOWN,
COMPONENTS AND FASTENERS MIRRORED
ON LEFT HAND SIDE

SUSPENSION, RAIL ASSEMBLY, 129", RH

C3 POWERSPORTS 2014 LTD

#1 - 17 RENAULT CRESENT,
ST. ALBERT, AB. T8N 4B7
PH 780 419-2040 / 888 267-5554 www.c3powersports.com

PROPRIETARY AND CONFIDENTIAL

THE INFORMATION CONTAINED IN THIS DRAWING IS THE SOLE PROPERTY OF C3 POWERSPORTS 2014 LTD. ANY REPRODUCTION IN PART OR AS A WHOLE WITHOUT THE WRITTEN PERMISSION OF C3 POWERSPORTS 2014 LTD IS PROHIBITED.



DWG. NO.

YASU1804 D2

REV.

DATE

JULY 18 2017

WEIGHT: 5.341

2

1

ITEM	PART NUMBER	DESCRIPTION	QTY.
1	YPSU1806BKD3	MOUNT, RAIL, FRONT ARM	1
2	YPSU1370	FRONT ARM LOWER NYLON BUSHING (IN RAIL)	2
3	YPHW1392D2	BOLT, M8-1.25 X 40mm, REACTOR ARM, Ti	1
4	YPHW1393D1	NUT, M8-1.25, REACTOR ARM INNER, Ti	1
5	YPSU1391	SL2 REACTOR TRANSFER ADJUSTER STYLE 3	2
6	YPSU2443D1.5	RAIL TIP, LOW PROFILE	1
7	YPSU1877D2	BUMPER, FRONT BOTTOMING	1
8	YPSU1878D3	BUMPER, REAR BOTTOMING	1
9	YPHW1596	SCREW, M5-.8 X 30mm, BUTTON HEAD SOCKET CAP	2
10	YPHW1597	NUT, M5-.8, FLANGE NYLOCK, ZP	3
11	YPHW1617	SCREW, M5-.8 X 35mm, BUTTON HEAD SOCKET CAP	1
12	YPHW1254	SCREW, M6.3-1.81 X 16MM, PHILLIPS	1
13	YPSU1808BKD4	PLATE, REAR AXLE ADJUSTER	1
14	YPSU1829CLD6	RAIL, 129" ALUMINUM, 1.1	1
15	YPSU1328D4	SLIDER, 129" RAIL, GRAPHITE, 46.75" LONG, POLARIS PROFILE 26	1
16	YPHW2265	SCREW, M5-.8 X 20mm, BUTTON HEAD SOCKET CAP	1
17	YPHW1067LRD1	BOLT, M6-1.0 X 12mm, FLANGE HEAD 8mm HEX DRIVE, Ti	4
18	YPHW2366	Washer, White Flat Plastic .315X1.5X.062	3

129" SHOWN.

*FOR 120", ITEM 15 (RAIL) IS YPSU1820 & ITEM 16 (SLIDER) IS YPSU1327
FOR 137", ITEM 15 (RAIL) IS YPSU1837 & ITEM 16 (SLIDER) IS YPSU1329*

SUSPENSION, RAIL ASSEMBLY, 129", RH

C3 POWERSPORTS 2014 LTD

#1 - 17 RENAULT CRESENT,
ST. ALBERT, AB. T8N 4B7
PH 780 419-2040 / 888 267-5554 www.c3powersports.com

PROPRIETARY AND CONFIDENTIAL

THE INFORMATION CONTAINED IN THIS DRAWING IS THE SOLE PROPERTY OF C3 POWERSPORTS 2014 LTD. ANY REPRODUCTION IN PART OR AS A WHOLE WITHOUT THE WRITTEN PERMISSION OF C3 POWERSPORTS 2014 LTD IS PROHIBITED.



DWG. NO.

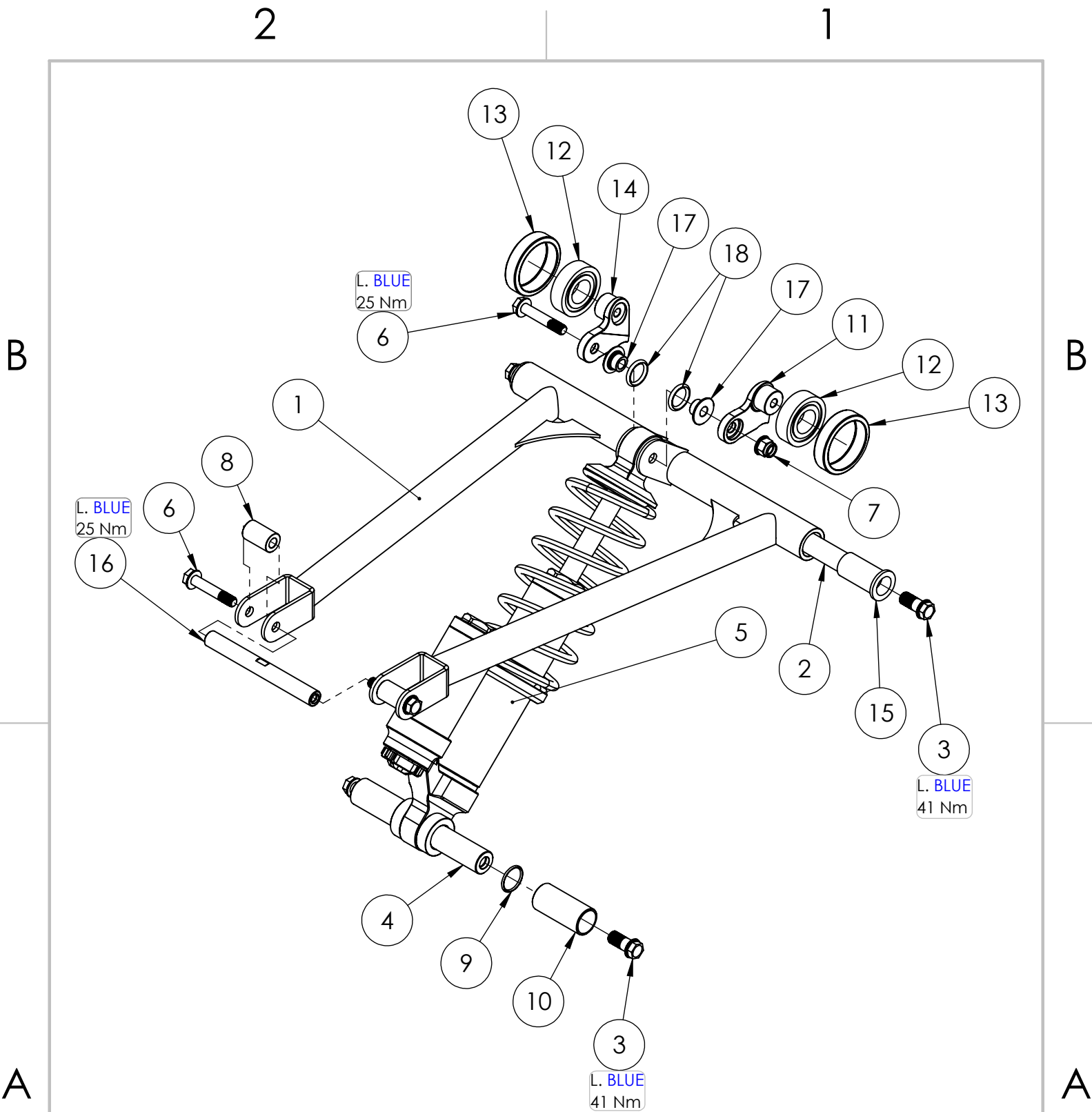
YASU1804D2

REV.

DATE

JULY 18 2017

WEIGHT: 5.341



2018 SUSPENSION, FRONT ARM ASSEMBLY, SS

C3 POWERSPORTS 2014 LTD #1 - 17 RENAULT CRESENT, ST. ALBERT, AB. T8N 4B7 PH 780 419-2040 888 267-5554 www.c3powersports.com		DWG. NO. YASU1927D2 REV.	
PROPRIETARY AND CONFIDENTIAL <small>THE INFORMATION CONTAINED IN THIS DRAWING IS THE SOLE PROPERTY OF C3 POWERSPORTS 2014 LTD. ANY REPRODUCTION IN PART OR AS A WHOLE WITHOUT THE WRITTEN PERMISSION OF C3 POWERSPORTS 2014 LTD IS PROHIBITED.</small>		DATE JUNE 15 2017	WEIGHT: 6.248

ITEM NO.	PART NUMBER	DESCRIPTION	QTY.
1	YPSU2270D3	FRONT ARM TITANIUM WELDED GR 9, 12.4" WIDE	1
2	YPSU2498D1	SHAFT, FRONT ARM UPPER, 7075 ALUMINUM, 10MM	1
3	YPHW1894LBD1	BOLT, M10-1.25 X 22mm, FLANGE HEAD 12mm HEX DRIVE, Ti	4
4	YPSU2380D1	SHAFT, LOWER SHOCK, Ti, 3/4", SS	1
5	YPSU1900D1	SHOCK, RAPTOR, FRONT, 90 DEGREE RESERVOIR	1
6	YPHW1376LBD1	BOLT, M8-1.25 X 43mm, FLANGE HEAD 12mm HEX DRIVE, Ti	3
7	YPHW1377D1	NUT, M8-1.25, NYLOCK, Ti	1
8	YPSU1371D1	PIN, FRONT ARM LOWER, 7075 HARD ANODIZED	2
9	YPHW1987	ORING, #018, 3/4 ID X 1/16 C.S. X 7/8 OD	2
10	YPSU2159D1	COLLAR, LOWER SHOCK SHAFTS, RAPTOR, 5.5 OCL	2
11	YPSU2637D1	Bracket, Track Rub Protector, RH	1
12	YPHW1074	BEARING 6004	2
13	YPSU2638D1	Sleeve, Track Rub Protector	2
14	YPSU2636D1	Bracket, Track Rub Protector, LH	1
15	YPSU1369	FRONT ARM UPPER NYLON BUSHING	2
16	YPSU2575D1	Shaft, Front Arm, Rail Mount Cross Tie, SS	1
17	YPSU2407	Bushing, Center Shock Upper, Raptor, .75 X M8	2
18	YPHW1886	ORING, #208, 5/8 ID X 1/8 C.S. X 7/8 OD, SHOCK BUSHINGS	2

129SS SHOWN.

FOR 120SS, ITEM 1 (ARM) IS YPSU1773, ITEM 15 (BUSHINGS) IS YPSU1972, & ITEM 2 (SHAFT) IS YPSU1971

SHOCK CAN BE UPGRADED TO YPSU2495, CHECK BUILD SHEET

2018 SUSPENSION, FRONT ARM ASSEMBLY, SS

C3 POWERSPORTS 2014 LTD

#1 - 17 RENAULT CRESENT,
ST. ALBERT, AB. T8N 4B7
PH 780 419-2040 888 267-5554 www.c3powersports.com

PROPRIETARY AND CONFIDENTIAL

THE INFORMATION CONTAINED IN THIS DRAWING IS THE SOLE PROPERTY OF C3 POWERSPORTS 2014 LTD. ANY REPRODUCTION IN PART OR AS A WHOLE WITHOUT THE WRITTEN PERMISSION OF C3 POWERSPORTS 2014 LTD IS PROHIBITED.



DWG. NO.

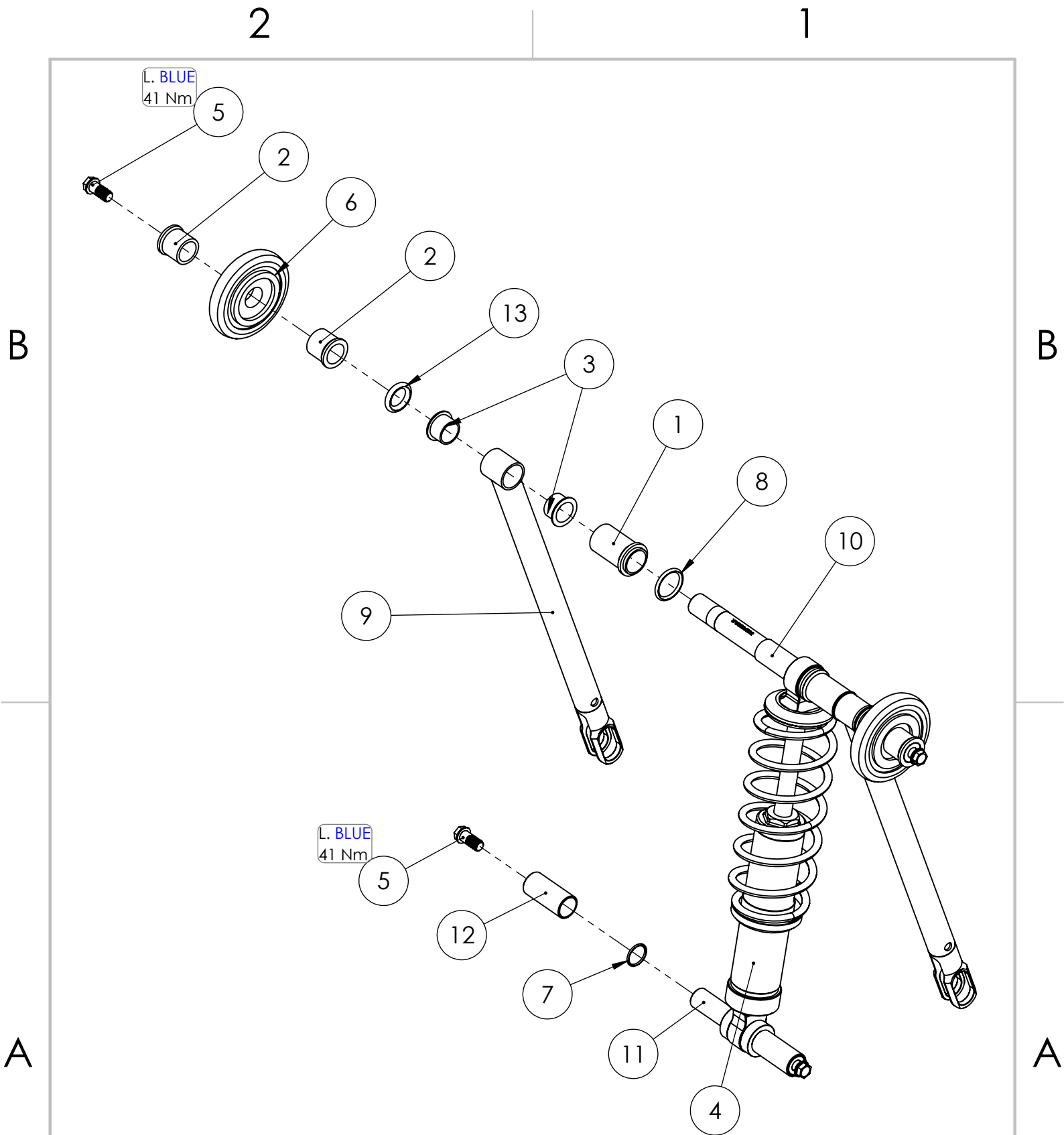
REV.

YASU1927D2

DATE

JUNE 15 2017

WEIGHT: 6.248



2018 SUSPENSION, REAR ARM ASSEMBLY, SS

C3 POWERSPORTS 2014 LTD

#1 - 17 RENAULT CRESENT,
ST. ALBERT, AB. T8N 4B7
PH 780 419-2040 888 267-5554 www.c3powersports.com

PROPRIETARY AND CONFIDENTIAL

THE INFORMATION CONTAINED IN THIS DRAWING IS THE SOLE PROPERTY OF C3 POWERSPORTS 2014 LTD. ANY REPRODUCTION IN PART OR AS A WHOLE WITHOUT THE WRITTEN PERMISSION OF C3 POWERSPORTS 2014 LTD IS PROHIBITED.



DWG. NO.

REV.

YASU2442 D2

DATE

JUNE 20 2017

WEIGHT: 3.637

2

1

ITEM NO.	PART NUMBER	DESCRIPTION	QTY.
1	YPSU1381	SPACER, REAR UPPER SHAFT INNER, PLASTIC	2
2	YPSU1382	SPACER, REAR UPPER SHAFT MIDDLE, PLASTIC	4
3	YPSU1387	BUSHING, UPPER SHAFT REACTOR, NYLON	4
4	YPSU1898D1	SHOCK, YETI RT MONO	1
5	YPHW1894LBD1	BOLT, M10-1.25 X 22mm, FLANGE HEAD 12mm HEX DRIVE, Ti	4
6	YPSU1217	WHEEL, 3.35" OD, 20MM ID BEARING	2
7	YPHW1987	ORING, #018, 3/4 ID X 1/16 C.S. X 7/8 OD	2
8	YPSU1384	ORING, UPPER SHAFT INNER SEAL	2
9	YPSU2438D3	REACTOR ARM, Ti	2
10	YPSU2386D3	SHAFT, REAR UPPER SHOCK, TI, NARROW	1
11	YPSU2380D1	SHAFT, LOWER SHOCK, TI, 3/4", SS	1
12	YPSU2159D1	COLLAR, LOWER SHOCK SHAFTS, RAPTOR, 5.5 OCL	2
13	YPSU1385	ORING, UPPER SHAFT OUTER & MID SEAL	2

SHOCK CAN BE UPGRADED TP YPSU1899 OR YPSU2494, CHECK BUILD SHEET

2018 SUSPENSION, REAR ARM ASSEMBLY, SS

C3 POWERSPORTS 2014 LTD

#1 - 17 RENAULT CRESENT,
ST. ALBERT, AB. T8N 4B7
PH 780 419-2040 888 267-5554 www.c3powersports.com

PROPRIETARY AND CONFIDENTIAL

THE INFORMATION CONTAINED IN THIS DRAWING IS THE SOLE PROPERTY OF C3 POWERSPORTS 2014 LTD. ANY REPRODUCTION IN PART OR AS A WHOLE WITHOUT THE WRITTEN PERMISSION OF C3 POWERSPORTS 2014 LTD IS PROHIBITED.



DWG. NO.

REV.

YASU2442 D2

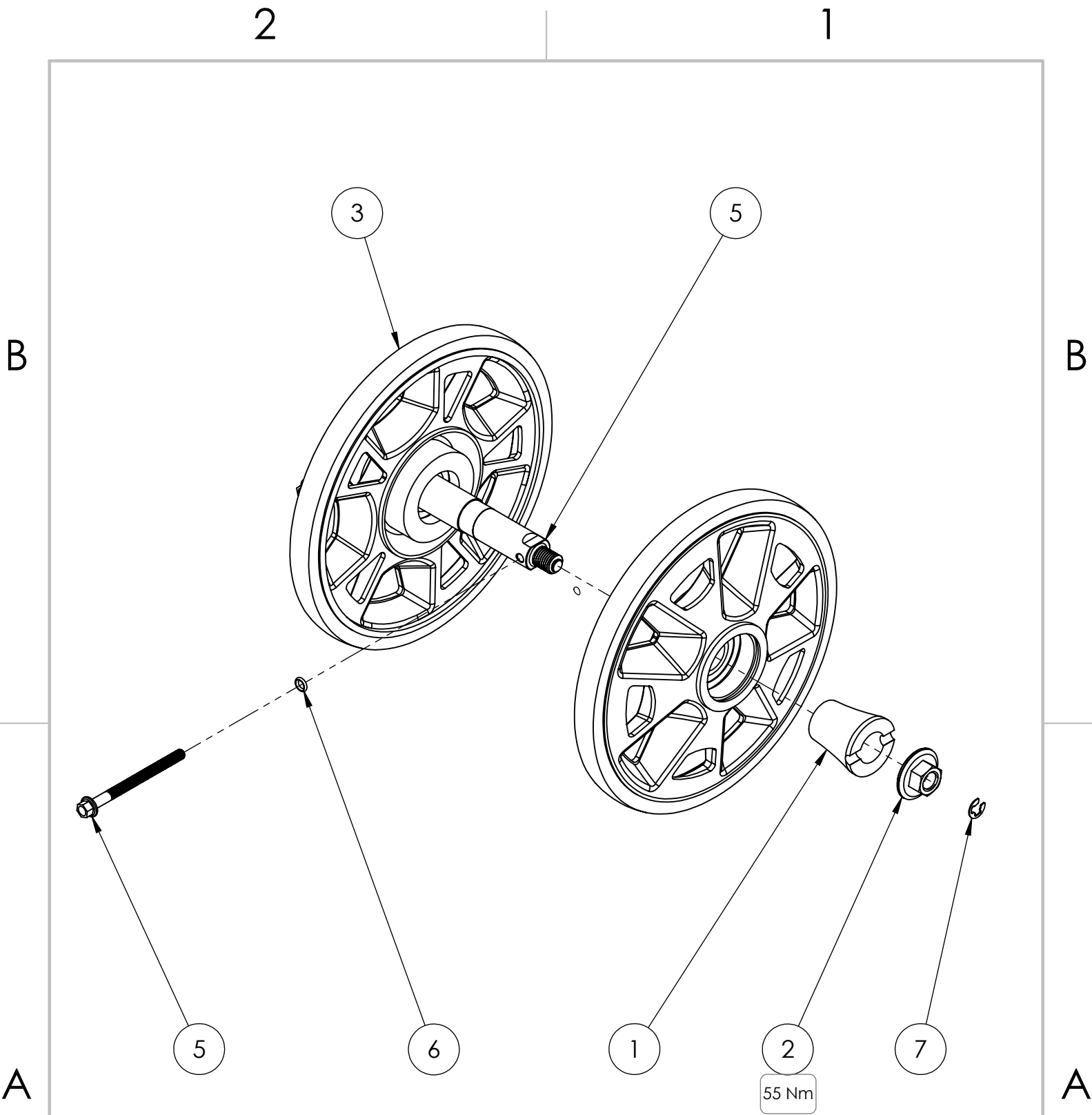
DATE

JUNE 20 2017

WEIGHT: 3.637

2

1



SUSPENSION, AXLE ASSEMBLY, 5.5" OCL

C3 POWERSPORTS 2014 LTD

#1 - 17 RENAULT CRESENT,
ST. ALBERT, AB. T8N 4B7
PH 780 419-2040 888 267-5554 www.c3powersports.com

PROPRIETARY AND CONFIDENTIAL

THE INFORMATION CONTAINED IN THIS DRAWING IS THE SOLE PROPERTY OF C3 POWERSPORTS 2014 LTD. ANY REPRODUCTION IN PART OR AS A WHOLE WITHOUT THE WRITTEN PERMISSION OF C3 POWERSPORTS 2014 LTD IS PROHIBITED.



DWG. NO.

REV.

YASU2501D1

DATE

JUNE 13-2017

WEIGHT: 2.069

2

1

ITEM NO.	PART NUMBER	DESCRIPTION	QTY.
1	YPSU2504D1	REAR AXLE FIBER REINFORCED PA COLLAR, 1.40" LONG	2
2	YPHW1361D2	NUT, REAR AXLE OUTER, M12X1.5, 17MM HEAD, TI	2
3	YPSU1901D1	WHEEL, REAR TRACK, 200MM	2
5	YPHW1640	BOLT, M6-1.0 X 75mm, FLANGE HEAD 8mm HEX DRIVE, Ti	2
5	YPSU2361D5	SUSPENSION, AXLE, 5.5" WIDE OCL, 7075	1
6	YPHW1695	ORING, #009 7/32 ID X 1/16 C.S. X 1 1/32 OD	2
7	YPHW1928	EXTERNAL RETAINING RING	2

SUSPENSION, AXLE ASSEMBLY, 5.5" OCL

C3 POWERSPORTS 2014 LTD

#1 - 17 RENAULT CRESENT,
ST. ALBERT, AB. T8N 4B7
PH 780 419-2040 888 267-5554 www.c3powersports.com

PROPRIETARY AND CONFIDENTIAL

THE INFORMATION CONTAINED IN THIS DRAWING IS THE SOLE PROPERTY OF C3 POWERSPORTS 2014 LTD. ANY REPRODUCTION IN PART OR AS A WHOLE WITHOUT THE WRITTEN PERMISSION OF C3 POWERSPORTS 2014 LTD IS PROHIBITED.



DWG. NO.

REV.

YASU2501D1

DATE

JUNE 13-2017

WEIGHT: 2.069

2

1

2

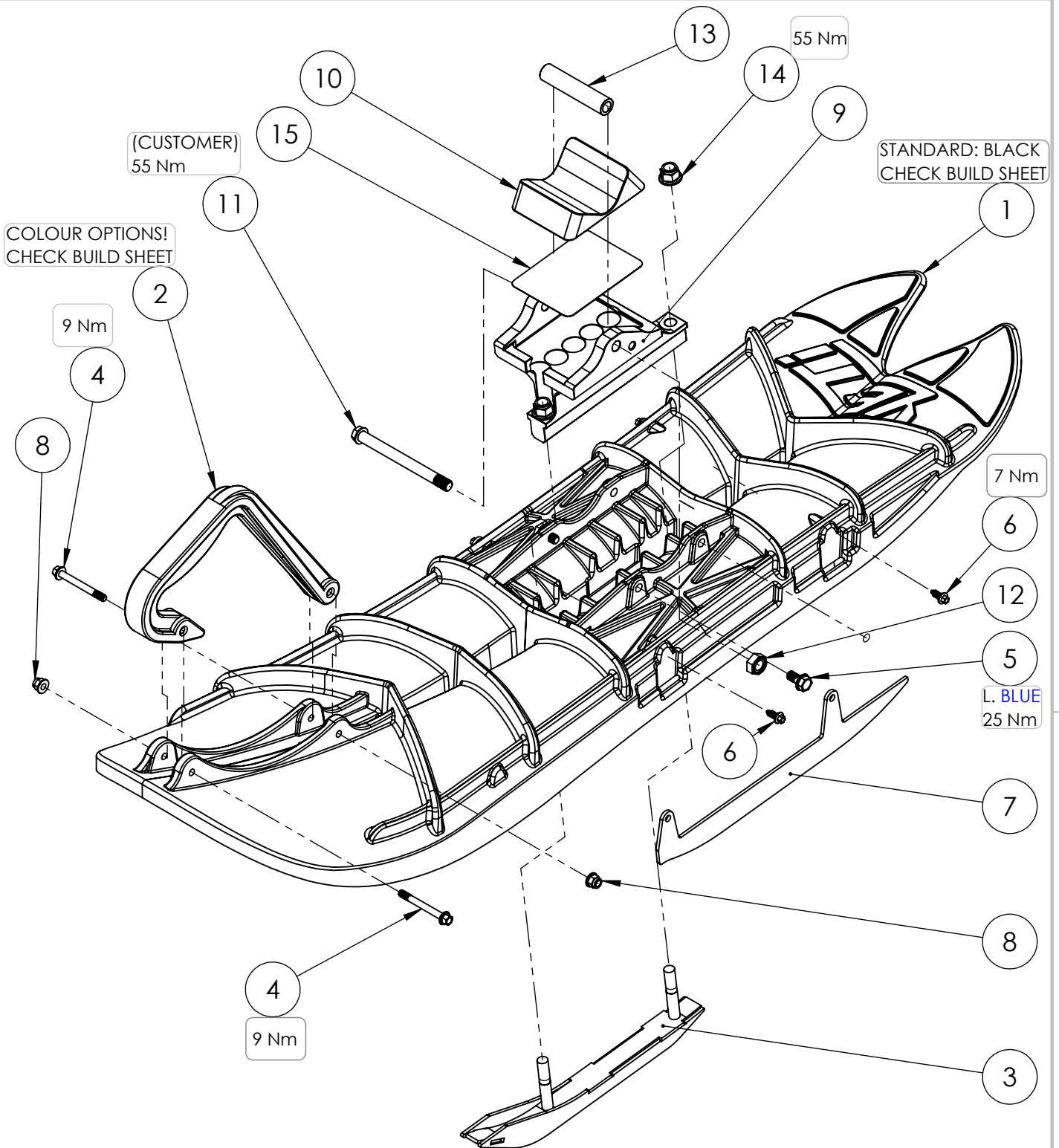
1

B

B

A

A



SKI ASSEMBLY

C3 POWERSPORTS 2014 LTD

#1 - 17 RENAULT CRESENT,
ST. ALBERT, AB. T8N 4B7
PH 780 419-2040 888 267-5554 www.c3powersports.com

PROPRIETARY AND CONFIDENTIAL

THE INFORMATION CONTAINED IN THIS DRAWING IS THE SOLE PROPERTY OF C3 POWERSPORTS 2014 LTD. ANY REPRODUCTION IN PART OR AS A WHOLE WITHOUT THE WRITTEN PERMISSION OF C3 POWERSPORTS 2014 LTD IS PROHIBITED.



DWG. NO.

YASK1188 D1

REV.

DATE AUG 24 2017

WEIGHT: 11.646

2

1

2

1

ITEM NO.	PART NUMBER	DESCRIPTION	QTY.
1	YPSK1094BKD6	SKI, BLACK, 2018 REVISION	1
2	YPSK1195	SKI HANDLE, BLACK	1
3	YPSK2577D2	SKAG, HARDOX, WELDED, 2018	1
4	YPHW1030D1	BOLT, M6-1.0 X 50mm, FLANGE HEAD 8mm HEX DRIVE, Ti	2
5	YPHW1003LBD1	BOLT, M8-1.25 X 16mm, FLANGE HEAD 12mm HEX DRIVE, Ti	2
6	YPHW1066D2	SCREW, M6-2.75 x 14mm, FLANGE HEAD 6mm HEX DRIVE	4
7	YPSK1823D1	SKI, OUTSIDE RUNNER, 2017	2
8	YPHW1063D1	NUT, M6-1.0, FLANGE NYLOCK, Ti	2
9	YPSK2448D1	SKI RECIEVER, ONE PIECE, ASM, LIGHTEND	1
10	YPSK1171D4	BUMPER, SKI, YETI ASM	1
11	YPHW1599D1	BOLT, M10-1.25 x 110 FLANGE HEAD 12mm HEX DRIVE, Ti	1
12	YPHW1059	NUT, M10-1.25, ALL METAL SELF LOCKING	1
13	YPSK1172D2	BUSHING, ASM TO YETI SPINDLE, 10MM ID	1
14	YPHW1263	NUT, M10-1.5 FLANGED NYLON LOCK	2
15	YPSK1904D2	PLATE, SKI BUMPER, .020" TI	1

SKI ASSEMBLY

C3 POWERSPORTS 2014 LTD

#1 - 17 RENAULT CRESENT,
ST. ALBERT, AB. T8N 4B7
PH 780 419-2040 888 267-5554 www.c3powersports.com

PROPRIETARY AND CONFIDENTIAL

THE INFORMATION CONTAINED IN THIS DRAWING IS THE SOLE PROPERTY OF C3 POWERSPORTS 2014 LTD. ANY REPRODUCTION IN PART OR AS A WHOLE WITHOUT THE WRITTEN PERMISSION OF C3 POWERSPORTS 2014 LTD IS PROHIBITED.



DWG. NO.

REV.

YASK1188 D1

DATE

AUG 24 2017

WEIGHT:

2

1

2

1

YETI SPINDLE ASSEMBLY COMMON PARTS

ALL COLOURED PARTS
ITEMS 1, 2, 3, 4, 6
STANDARD: CLEAR
CHECK BUILD SHEET

8

4

3

8

5

8

L. BLUE
25 Nm

8.2

L. BLUE
9 Nm

8.4

8.9

8.8

8.9

7

8.1

8.10

8.7

8.5

L. BLUE
25 Nm

8.2

L. BLUE
25 Nm

8.6

L. BLUE
25 Nm

8.3

(CUSTOMER)
25 Nm

2018 Spindle Assembly, 33mm Offset, 48mm Drop, 48mm Fork, 190mm CL,
15-Cur KTM & Husky 250, 300, 350, 450

C3 POWERSPORTS 2014 LTD

#1 - 17 RENAULT CRESENT,
ST. ALBERT, AB. T8N 4B7
PH 780 419-2040 888 267-5554 www.c3powersports.com

PROPRIETARY AND CONFIDENTIAL

THE INFORMATION CONTAINED IN THIS DRAWING IS THE SOLE PROPERTY OF C3
POWERSPORTS 2014 LTD. ANY REPRODUCTION IN PART OR AS A WHOLE WITHOUT THE
WRITTEN PERMISSION OF C3 POWERSPORTS 2014 LTD IS PROHIBITED.



DWG. NO.

REV.

YASP2467 D3

DATE

AUG 24 2017

WEIGHT: 5.74

2

1

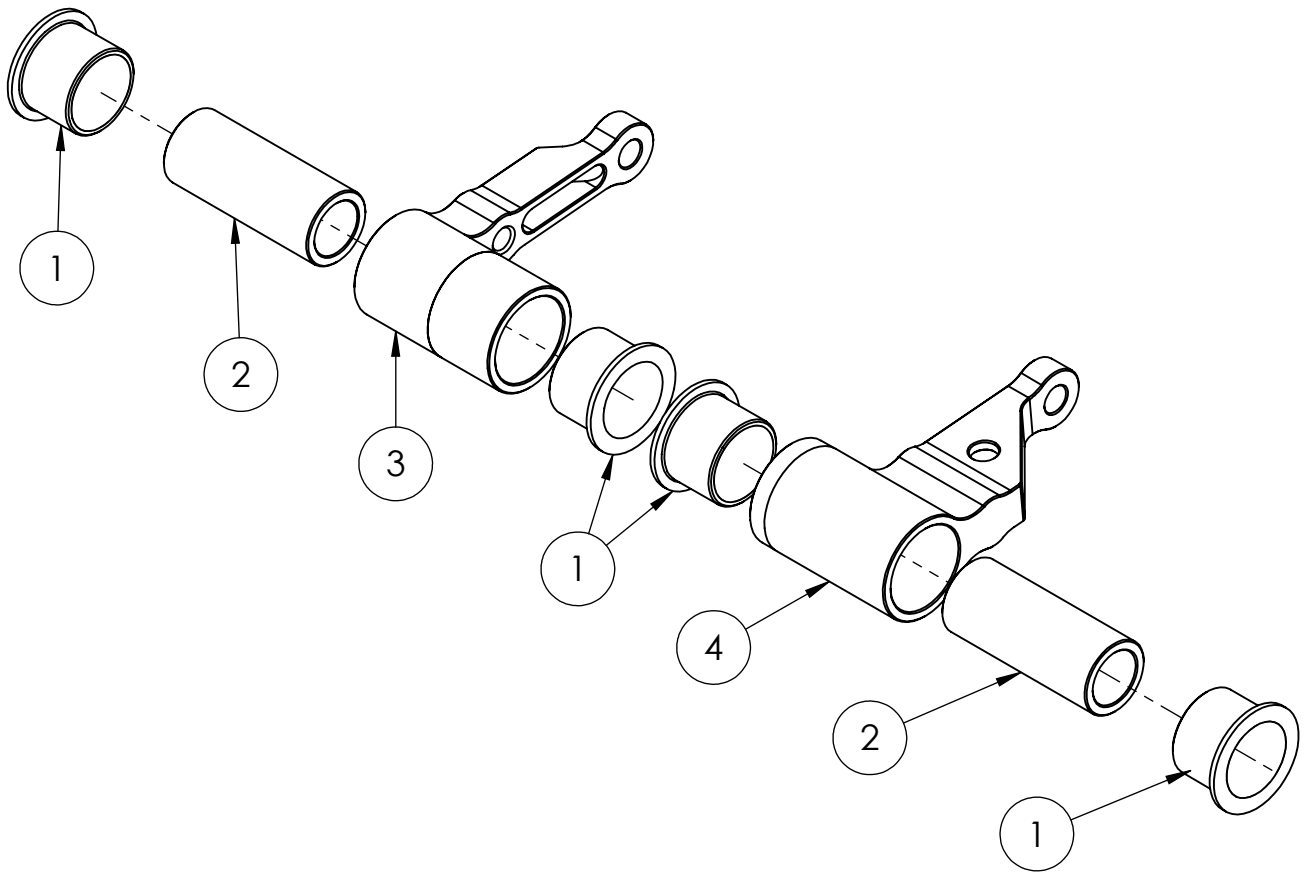
ITEM NO.	PART NUMBER	DESCRIPTION	QTY.
SPINDLE BIKE-SPECIFIC PARTS THESE VARY BY BIKE - SEE COMPLETE ADAPTER KIT LIST			
1	YPSP1432CLD1	SPINDLE FORK CLAMP, RH, 1/4" BLADE	1
2	YPSP1023CLD1	SPINDLE FORK CLAMP CAP, 48MM, RH	1
3	YPSP1431CLD1	SPINDLE FORK CLAMP, LH, 1/4" BLADE	1
4	YPSP1165CLD1	SPINDLE FORK CLAMP CAP, 48MM, LH	1
5	YPSP2401	SPINDLE BLADE, CENTER, 2018, 14.5, 33MM OFFSET, 48MM DROP, KTM/HUSKY 15-CURRENT 22MM AXLE	1
7	YPSP1079CLD1	SPINDLE BLADE SPACER	1
8	YPSP1174D2	SPINDLE AXLE SPACER, 22MM AXEL, 2.55" LONG	2
-			
8	YASP2505D1	2018 SPINDLE COMMON PART	1
8.1	YPSP1430D4	SPINDLE 1/2 BLOCK, ASM, 1/4" BLADE	2
8.2	YPHW1003LBD1	BOLT, M8-1.25 X 16mm, FLANGE HEAD 12mm HEX DRIVE, Ti	16
8.3	YPHW1008D1	BOLT, M8-1.25 X 25mm, SOCKET HEAD 6mm DRIVE, Ti	4
8.4	YPHW1594D1	BOLT, M6-1.0 X 30mm, SOCKET HEAD 5mm DRIVE, Ti	2
8.5	YPHW1376LBD1	BOLT, M8-1.25 X 43mm, FLANGE HEAD 12mm HEX DRIVE, Ti	2
8.6	YPHW1009D1	BOLT, M8-1.25 X 20mm, SOCKET HEAD 6mm DRIVE, Ti	2
8.7	YPHW1611	BEARING, IGLIDE Q2-EXTREME LOAD, 16MM ID X 18MM OD X 17MM LONG, 2MM FLANGE	2
8.8	YPSP1028D1	SPINDLE FORK CLAMP SPACER	1
8.9	YPSP2400D2	SPINDLE BLADE OUTSIDE, 2018, LH, RH, 14.5, 1/4" BLADE	2
8.10	YPSP2511	BEARING, Q2 SLEEVE	2
SPINDLE GOES IN COMPLETE ADAPTOR KIT BOX, YPBX2604 14.25x11.75x9.75			
2018 Spindle Assembly, 33mm Offset, 48mm Drop, 48mm Fork, 190mm CL, 15-Cur KTM & Husky 250, 300, 350, 450			
C3 POWERSPORTS 2014 LTD #1 - 17 RENAULT CRESENT, ST. ALBERT, AB. T8N 4B7 PH 780 419-2040 888 267-5554 www.c3powersports.com		DWG. NO. YASP2467 REV. D3	
PROPRIETARY AND CONFIDENTIAL <small>THE INFORMATION CONTAINED IN THIS DRAWING IS THE SOLE PROPERTY OF C3 POWERSPORTS 2014 LTD. ANY REPRODUCTION IN PART OR AS A WHOLE WITHOUT THE WRITTEN PERMISSION OF C3 POWERSPORTS 2014 LTD IS PROHIBITED.</small>		DATE AUG 24 2017	WEIGHT:

2

1

B

B



THESE ASSEMBLIES VARY BY BIKE - SEE COMPLETE ADAPTER KIT LIST

ITEM NO.	PART NUMBER	DESCRIPTION	QTY
1	YPBM1746	BEARING, BIKE MOUNT 2.1	4
2	YPBM2234D1	BUSHING, BIKE MOUNT 2.1, 54MM, 15-16 TM 450, LH, RH	2
3	YPBM2232D1	BIKE MOUNT, TM, RH	1
4	YPBM2231D1	BIKE MOUNT, TM, LH	1

BIKE MOUNT ADAPTER ASSEMBLY FOR 2.2 PLATES, 14-16 TM 450

C3 POWERSPORTS 2014 LTD

#1 - 17 RENAULT CRESENT,
ST. ALBERT, AB. T8N 4B7
PH 780 419-2040 888 267-5554 www.c3powersports.com

PROPRIETARY AND CONFIDENTIAL

THE INFORMATION CONTAINED IN THIS DRAWING IS THE SOLE PROPERTY OF C3 POWERSPORTS 2014 LTD. ANY REPRODUCTION IN PART OR AS A WHOLE WITHOUT THE WRITTEN PERMISSION OF C3 POWERSPORTS 2014 LTD IS PROHIBITED.



DWG. NO.

REV.

YABM2199D1

DATE

SEPT 27-2016

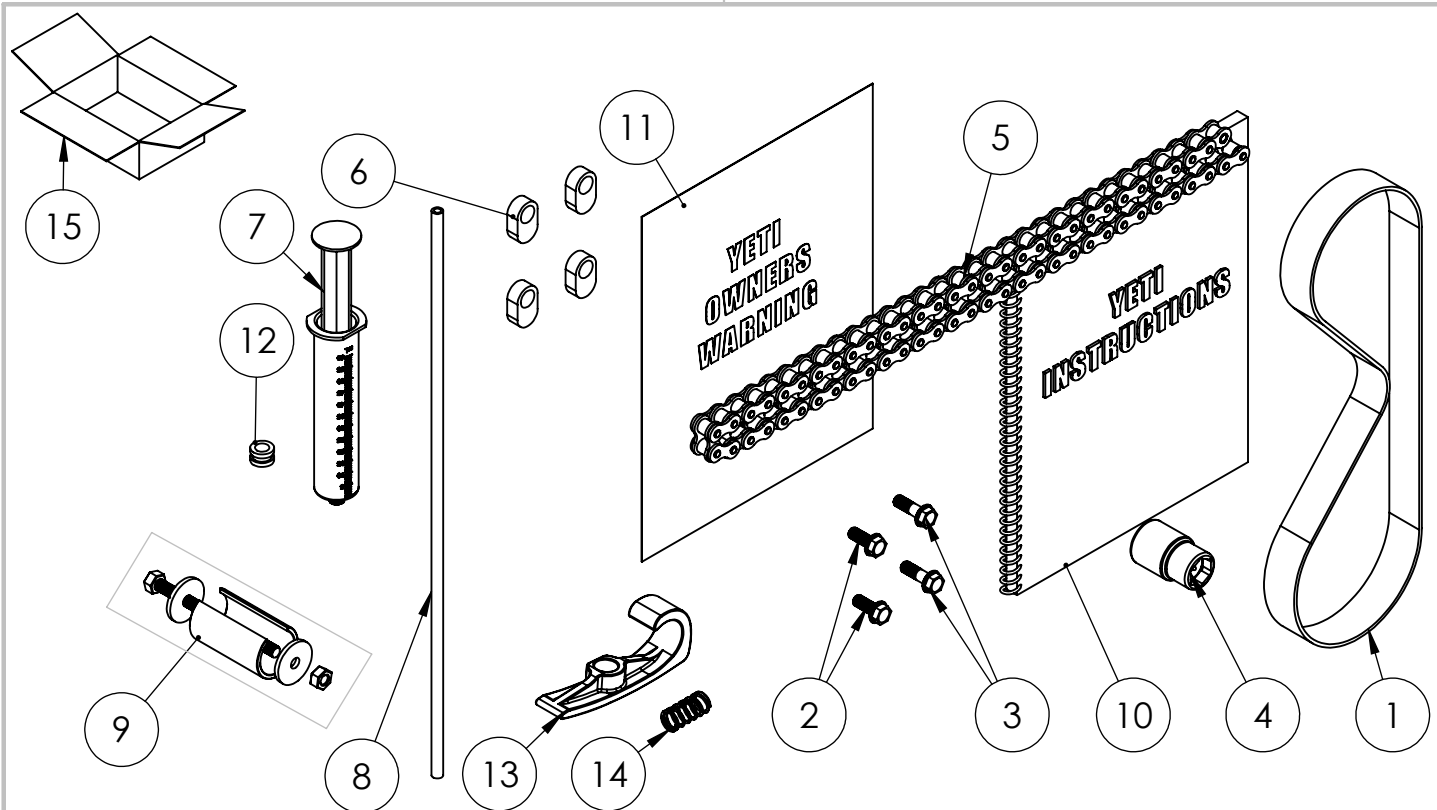
WEIGHT: 0.499

2

1

A

A



ITEM NO.	PART NUMBER	DESCRIPTION	QTY.
1	YPDR1792	BELT, 896MM LONG X 28MM WIDE, MITSUBOSHI GIGA TORQUE	1
2	YPHW1001LBD1	BOLT, M8-1.25 X 20mm, FLANGE HEAD 12mm HEX DRIVE, Ti	2
3	YPHW1897LBD1	BOLT, M8-1.25 X 25mm, FLANGE HEAD 12mm HEX DRIVE, Ti	2
4	YPHW1595D3	SOCKET, ECCENTRIC NUT, 22mm AND 19mm	1
5	YPDR1427	D.I.D. 60 LINK CHAIN 520 VX2	1
6	YPSU1389	SL2 REACTOR TRANSFER ADJUSTER STYLE 1	4
7	YPAC1710	SYRINGE, 60MM CATHETER TIP	1
8	YPAC1843	HOSE, BRAKE LINE BLEEDING 3/16" POLYURETHANE CLEAR 18" LONG	1
9	YAAC1986D1	TOOL, BIKE MOUNT INSTALL TOOL WORKS W/2.1 & 2.2 PLATES	1
10	YDIN9018	YETI 2018 INSTRUCTIONS	1
11	YDIN9005	YETI OWNERS WARNING SHEET	1
12	YPHW1683	RUBBER GROMMET 3/8"ID X 1/8" GROOVE 1/2" WIDE	1
13	YPBM1748D11	CHAIN PROTECTOR, BIKE ADAPTER, 2.1	1
14	YPHW1797	SPRING, CHAIN TENSIONER LIGHT	1
15	YPBX2603	Box, Fitment Components, 11.75x5.5x11.75	1

Common Fitment Components Parts Box 2018 SS models

C3 POWERSPORTS 2014 LTD

#1 - 17 RENAULT CRESENT,
ST. ALBERT, AB. T8N 4B7
PH 780 419-2040 888 267-5554 www.c3powersports.com

PROPRIETARY AND CONFIDENTIAL

THE INFORMATION CONTAINED IN THIS DRAWING IS THE SOLE PROPERTY OF C3 POWERSPORTS 2014 LTD. ANY REPRODUCTION IN PART OR AS A WHOLE WITHOUT THE WRITTEN PERMISSION OF C3 POWERSPORTS 2014 LTD IS PROHIBITED.



DWG. NO.

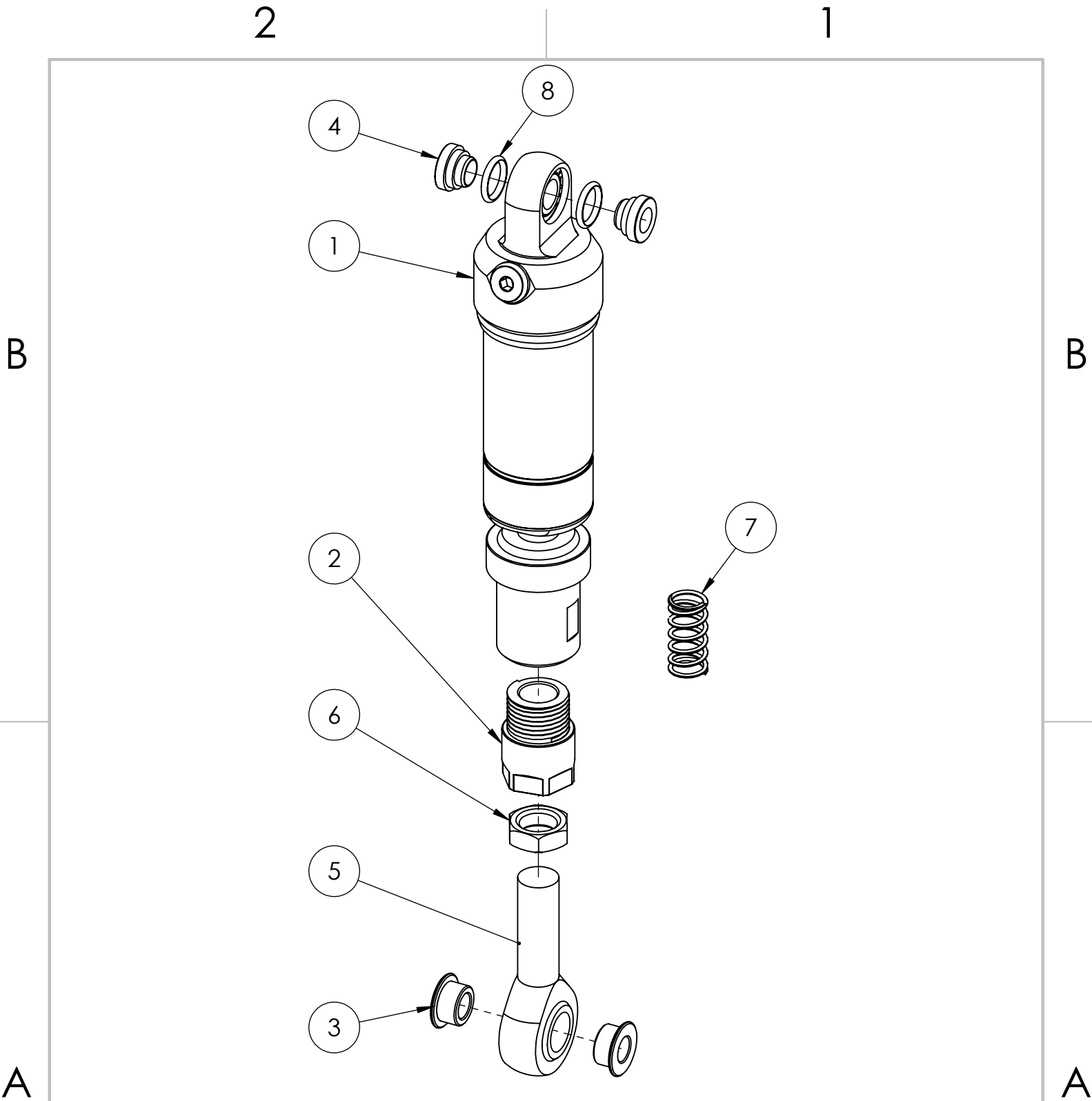
REV.

YAAK2588 D1

DATE

SEPT 21-2017

WEIGHT:



YSS Assembly, KTM/Husky Link

C3 POWERSPORTS 2014 LTD #1 - 17 RENAULT CRESENT, ST. ALBERT, AB. T8N 4B7 PH 780 419-2040 888 267-5554 www.c3powersports.com		DWG. NO.		REV.
PROPRIETARY AND CONFIDENTIAL <small>THE INFORMATION CONTAINED IN THIS DRAWING IS THE SOLE PROPERTY OF C3 POWERSPORTS 2014 LTD. ANY REPRODUCTION IN PART OR AS A WHOLE WITHOUT THE WRITTEN PERMISSION OF C3 POWERSPORTS 2014 LTD IS PROHIBITED.</small>		YASU2452 D1		
		DATE OCT 4 2017	WEIGHT:	

2

1

ITEM NO.	PART NUMBER	DESCRIPTION	QTY.
1	YPSU2419D1	STRUT, YSS	1
2	YPSU2427D2	STRUT, SOFT, ROD END CONNECTOR, .875"	1
3	YPBM1156	BUSHING, BETA/KXF/RMZ TOP .625 BALL END TO 10mm BOLT	2
4	YPSU2613D2	Bushing, Soft Strut Top, 24mm	2
5	YPHW1221	ROD END, RH, 5/8-18, 7075 BLACK ANODIZED	1
6	YPHW1062D1	NUT, 5/8 - 18, RH, LOCK	1
7	YPHW1798	SPRING, CHAIN TENSIONER HEAVY	1
8	YPHW2596	ORING, YSS TOP	2

YSS Assembly, KTM/Husky Link

C3 POWERSPORTS 2014 LTD

#1 - 17 RENAULT CRESENT,
ST. ALBERT, AB. T8N 4B7
PH 780 419-2040 888 267-5554 www.c3powersports.com

PROPRIETARY AND CONFIDENTIAL

THE INFORMATION CONTAINED IN THIS DRAWING IS THE SOLE PROPERTY OF C3 POWERSPORTS 2014 LTD. ANY REPRODUCTION IN PART OR AS A WHOLE WITHOUT THE WRITTEN PERMISSION OF C3 POWERSPORTS 2014 LTD IS PROHIBITED.



DWG. NO.

REV.

YASU2452 D1

DATE

OCT 4 2017

WEIGHT:

2

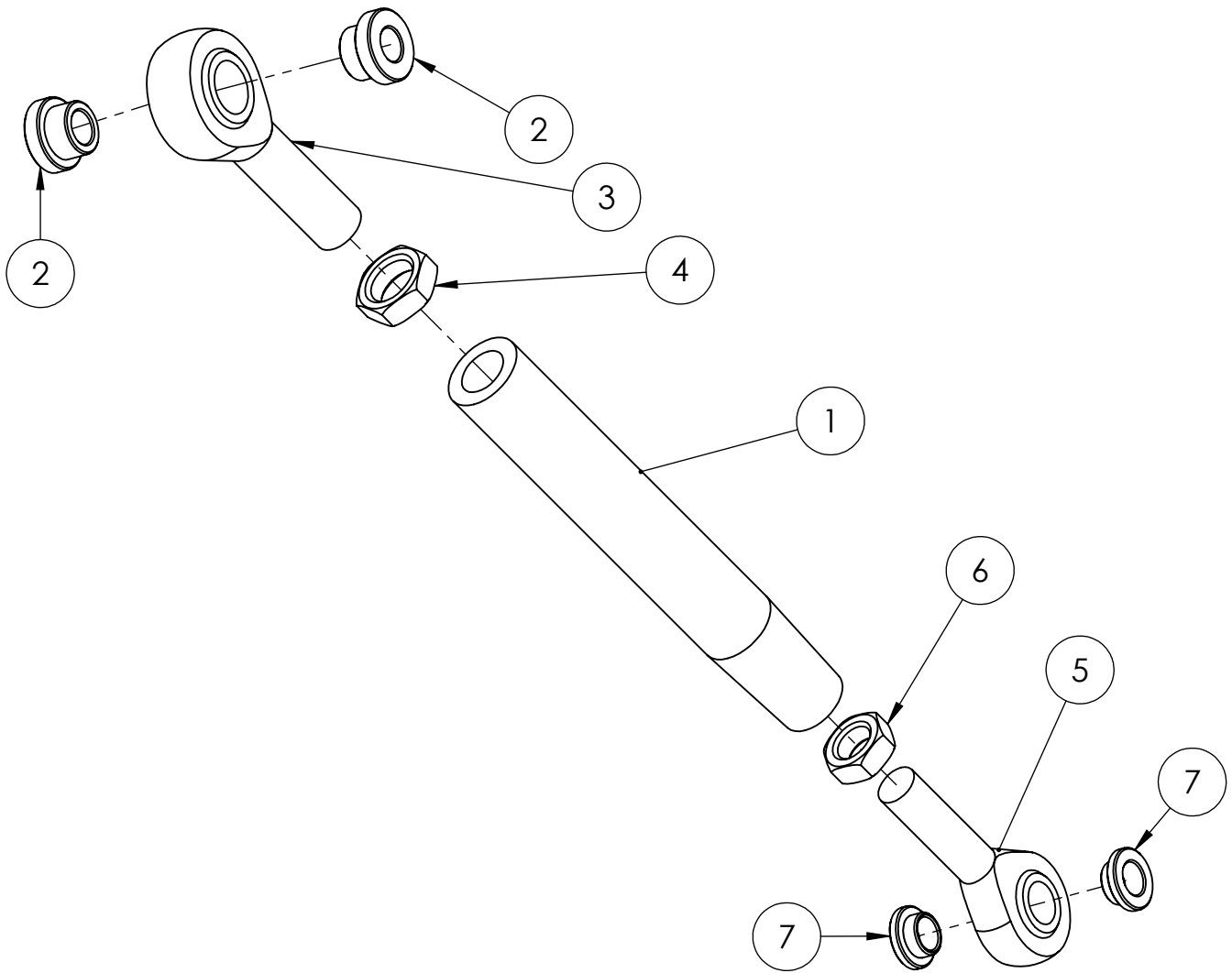
1

2

1

B

B



A

A

ITEM NO.	PART NUMBER	DESCRIPTION	QTY.
1	YPBM1240D1	STRUT, 6.5" LONG	1
2	YPBM1266D1	BUSHING, YAMAHA 450 TOP .625 BALL END TO 10mm BOLT	2
3	YPHW1221	ROD END, RH, 5/8-18, 7075 BLACK ANODIZED	1
4	YPHW1062D1	NUT, 5/8 - 18, RH, LOCK	1
5	YPHW1218	ROD END, LH, 1/2-20, 7075 BLACK ANODIZED	1
6	YPHW1061D1	NUT, 1/2-20, LH, LOCK	1
7	YPBM1134	BUSHING, .5 BALL END TO 10mm BOLT	2

STRUT, RIGID, 8.875"-10.125" EYE TO EYE, YZF/YZFX/WR

C3 POWERSPORTS 2014 LTD

#1 - 17 RENAULT CRESENT,
ST. ALBERT, AB. T8N 4B7
PH 780 419-2040 / 888 267-5554 www.c3powersports.com

PROPRIETARY AND CONFIDENTIAL

THE INFORMATION CONTAINED IN THIS DRAWING IS THE SOLE PROPERTY OF C3 POWERSPORTS 2014 LTD. ANY REPRODUCTION IN PART OR AS A WHOLE WITHOUT THE WRITTEN PERMISSION OF C3 POWERSPORTS 2014 LTD IS PROHIBITED.



DWG. NO.

REV.

YABM1991D2

DATE

SEPT 21-2017

WEIGHT:

2

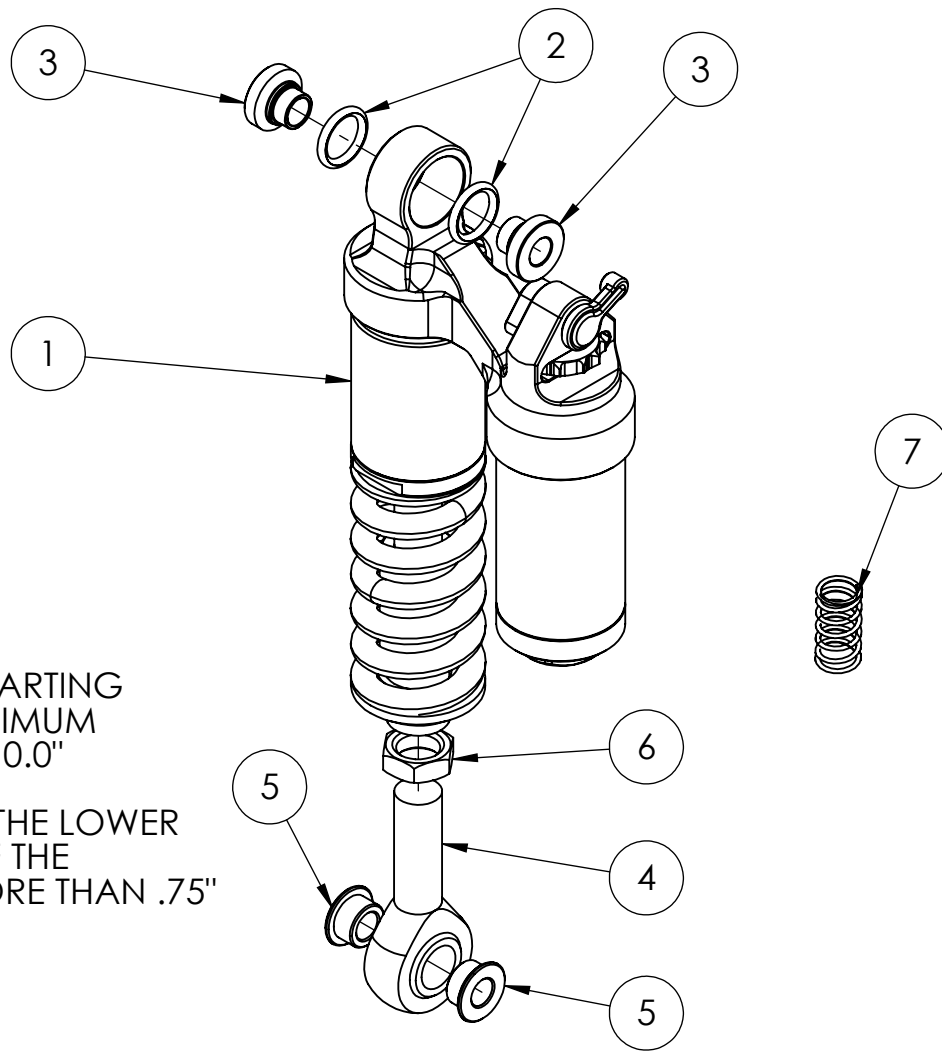
1

B

B

NOTE:
RECOMENDED STARTING
LENGTH AND MINIMUM
STRUT LENGTH IS 10.0"

DO NOT EXTEND THE LOWER
ROD END OUT OF THE
CONNECTOR MORE THAN .75"



ITEM NO.	PART NUMBER	DESCRIPTION	QTY.
1	YPSU2181	RRS POW, SHORT, 10-10.75"	1
2	YPHW1886	ORING, #208, 5/8 ID X 1/8 C.S. X 7/8 OD, SHOCK BUSHINGS	2
3	YPSU2179	SPACER, UPPER SHOCK BUSHING FOR RRS 30mm (1.170"), 10 YAMAHA	2
4	YPHW1221	ROD END, RH, 5/8-18, 7075 BLACK ANODIZED	1
5	YPBM1156	BUSHING, BETA/KXF/RMZ TOP .625 BALL END TO 10mm BOLT	2
6	YPHW1062D1	NUT, 5/8 - 18, RH, LOCK	1
7	YPHW1798	SPRING, CHAIN TENSIONER HEAVY	1

RRS POW ASSEMBLY, YAMAHA YZF/YZFX/WR

C3 POWERSPORTS 2014 LTD

#1 - 17 RENAULT CRESENT,
ST. ALBERT, AB. T8N 4B7
PH 780 419-2040 / 888 267-5554 www.c3powersports.com

PROPRIETARY AND CONFIDENTIAL
THE INFORMATION CONTAINED IN THIS DRAWING IS THE SOLE PROPERTY OF C3
POWERSPORTS 2014 LTD. ANY REPRODUCTION IN PART OR AS A WHOLE WITHOUT THE
WRITTEN PERMISSION OF C3 POWERSPORTS 2014 LTD IS PROHIBITED.



DWG. NO.

REV.

YASU2111D2

DATE

JAN 24-2017

WEIGHT:

A

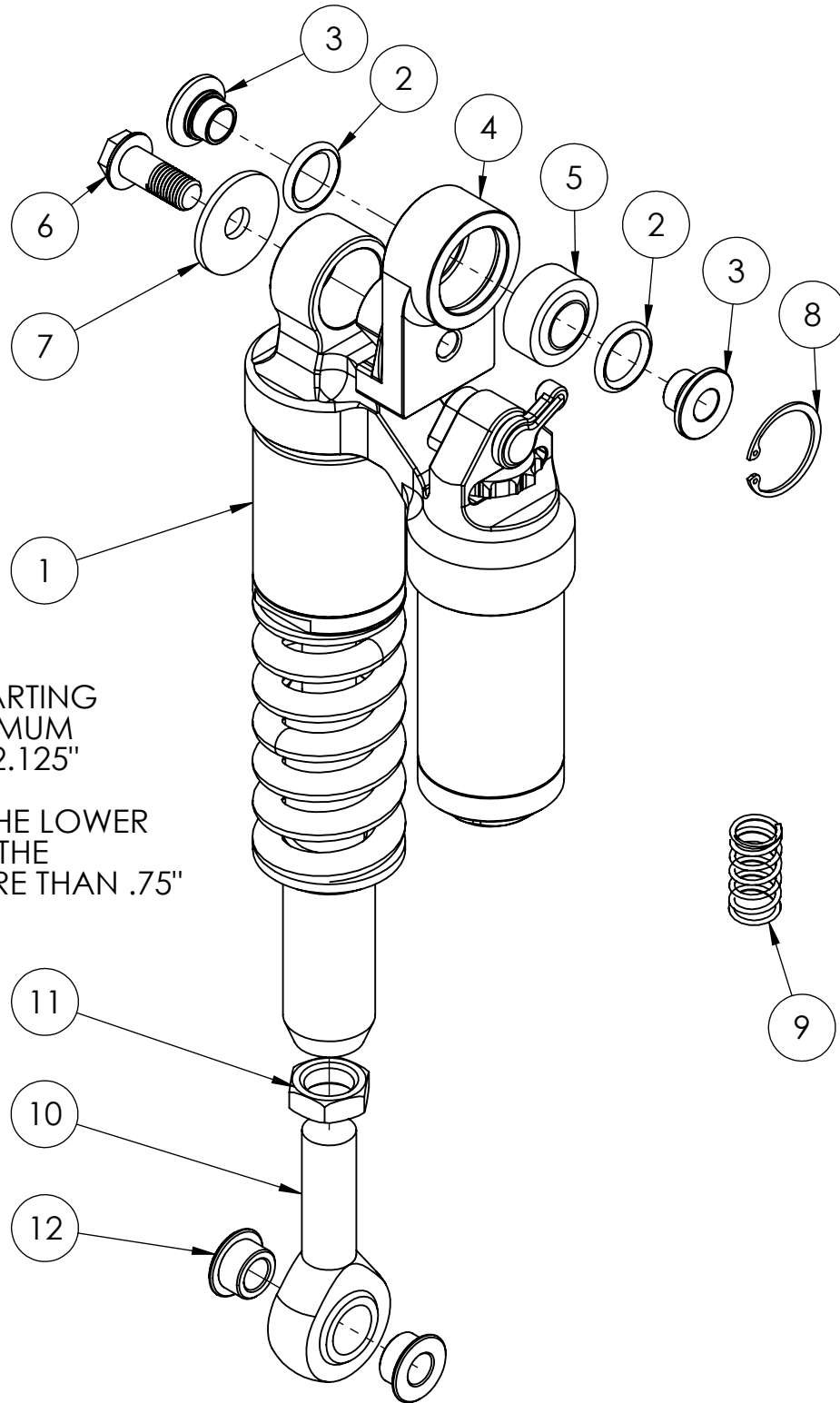
A

2

1

B

B



NOTE:
RECOMENDED STARTING
LENGTH AND MINIMUM
STRUT LENGTH IS 12.125"

DO NOT EXTEND THE LOWER
ROD END OUT OF THE
CONNECTOR MORE THAN .75"

A

A

RRS Pow Shock Assembly, KTM/Husky/Husa Pds

C3 POWERSPORTS 2014 LTD

#1 - 17 RENAULT CRESENT,
ST. ALBERT, AB. T8N 4B7
PH 780 419-2040 / 888 267-5554 www.c3powersports.com

PROPRIETARY AND CONFIDENTIAL

THE INFORMATION CONTAINED IN THIS DRAWING IS THE SOLE PROPERTY OF C3
POWERSPORTS 2014 LTD. ANY REPRODUCTION IN PART OR AS A WHOLE WITHOUT THE
WRITTEN PERMISSION OF C3 POWERSPORTS 2014 LTD IS PROHIBITED.



DWG. NO.

REV.

YASU2116D2

DATE

OCT 3-2017

WEIGHT:

2

1

2

1

ITEM NO.	PART NUMBER	DESCRIPTION	QTY.
1	YPSU2183	RRS POW, LONG, 11.125-11.875"	1
2	YPHW1886	ORING, #208, 5/8 ID X 1/8 C.S. X 7/8 OD, SHOCK BUSHINGS	2
3	YPSU2180	SPACER, UPPER SHOCK BUSHING FOR RRS 24mm (.940"), 12 KTM	2
4	YPSU2132D1	ADAPTER, RSS MED SHOCK TO PDS	1
5	YPHW2405	BEARING, COM 9 SEPHERICAL	1
6	YPHW2312	BOLT, M10-1.25 X 25mm, FLANGE HEAD HEX DRIVE	1
7	YPHW2313	WASHER, SPRING. M10 ID X M22 OD	1
8	YPHW2406	SNAP RING, INTERNAL, COM 9	1
9	YPHW1798	SPRING, CHAIN TENSIONER HEAVY	1
10	YPHW1221	ROD END, RH, 5/8-18, 7075 BLACK ANODIZED	1
11	YPHW1062D1	NUT, 5/8 - 18, RH, LOCK	1
12	YPBM1156	BUSHING, BETA/KXF/RMZ TOP .625 BALL END TO 10mm BOLT	2

C3 POWERSPORTS 2014 LTD

#1 - 17 RENAULT CRESENT,
ST. ALBERT, AB. T8N 4B7
PH 780 419-2040 / 888 267-5554 www.c3powersports.com

PROPRIETARY AND CONFIDENTIAL

THE INFORMATION CONTAINED IN THIS DRAWING IS THE SOLE PROPERTY OF C3 POWERSPORTS 2014 LTD. ANY REPRODUCTION IN PART OR AS A WHOLE WITHOUT THE WRITTEN PERMISSION OF C3 POWERSPORTS 2014 LTD IS PROHIBITED.



DWG. NO.

REV.

YASU2116D2

DATE

OCT 3-2017

WEIGHT:

2

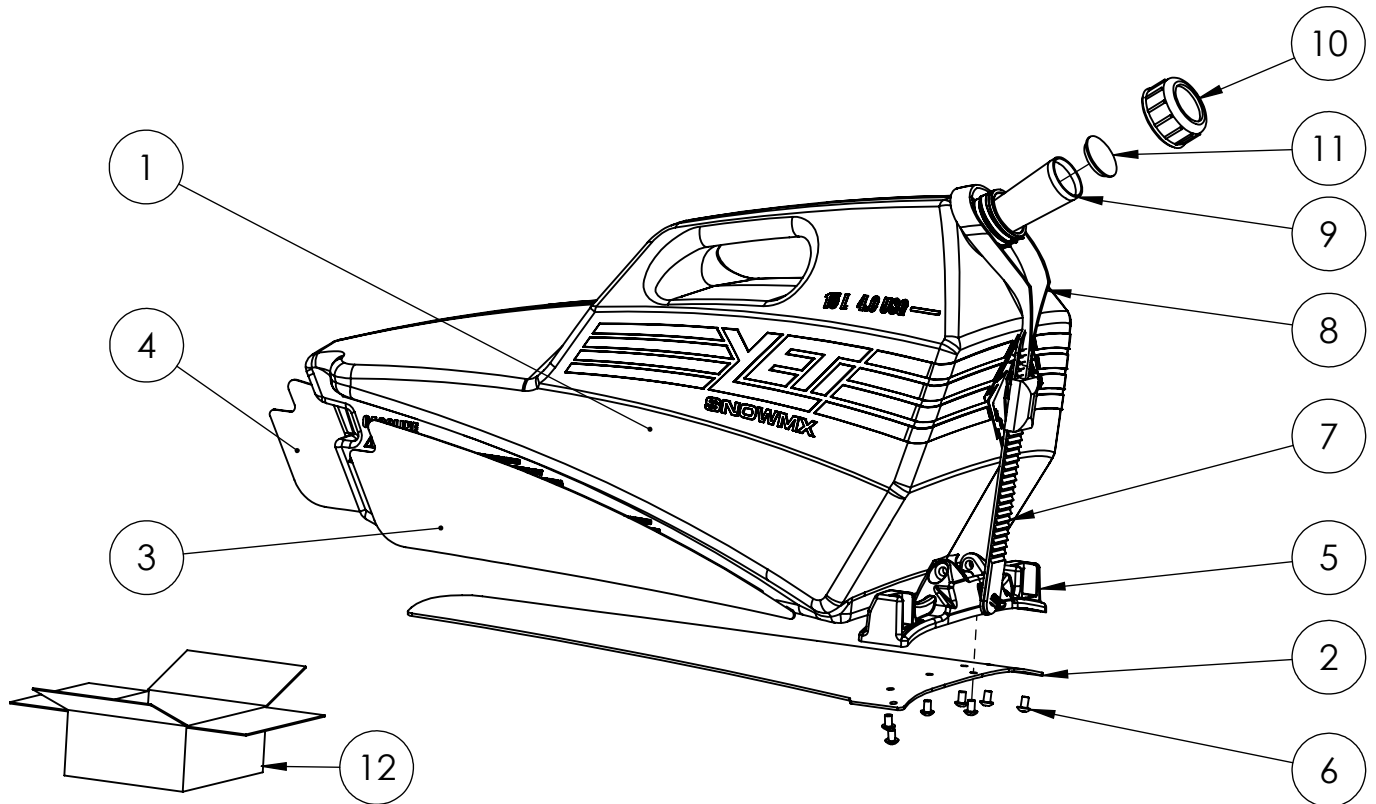
1

2

1

B

B



ITEM NO.	PART NUMBER	DESCRIPTION	QTY.
1	YPAC2154D1.8	YETI TANK, 15 LITER, RED	1
2	YPAC1733D8	Foam, YPAC1628 Utility Container Mount	1
3	YPAC1735D2	Foam, Utility Container Side, LH	1
4	YPAC1736D2	Foam, Utility Container Side, RH	1
5	YPAC1628D19.21	YETI Can Mount	1
6	YPHW1732LB	BOLT, M5-0.8 X 8MM BUTTON HEAD SOCKET CAP A4 S/S	7
7	YPAC2276	STRAP, 220MM LADDER	1
8	YPAC2278	Buckle, PS1-H Ratcheting/Strap	1
9	YPAC1738	SPOUT, UTILITY CAN	1
10	YPAC1739	CAP, UTILITY CAN	1
11	YPAC1740	STOPPER, UTILITY CAN	1
12	YPBX2605	Box, Utility Container, 22x11.75x11.75	1

A

A

CONTAINER, YETI UTILITY ASSEMBLY

C3 POWERSPORTS 2014 LTD

#1 - 17 RENAULT CRESENT,
ST. ALBERT, AB. T8N 4B7
PH 780 419-2040 / 888 267-5554 www.c3powersports.com

PROPRIETARY AND CONFIDENTIAL

THE INFORMATION CONTAINED IN THIS DRAWING IS THE SOLE PROPERTY OF C3 POWERSPORTS 2014 LTD. ANY REPRODUCTION IN PART OR AS A WHOLE WITHOUT THE WRITTEN PERMISSION OF C3 POWERSPORTS 2014 LTD IS PROHIBITED.



DWG. NO.

YAAC1768

REV.

DATE

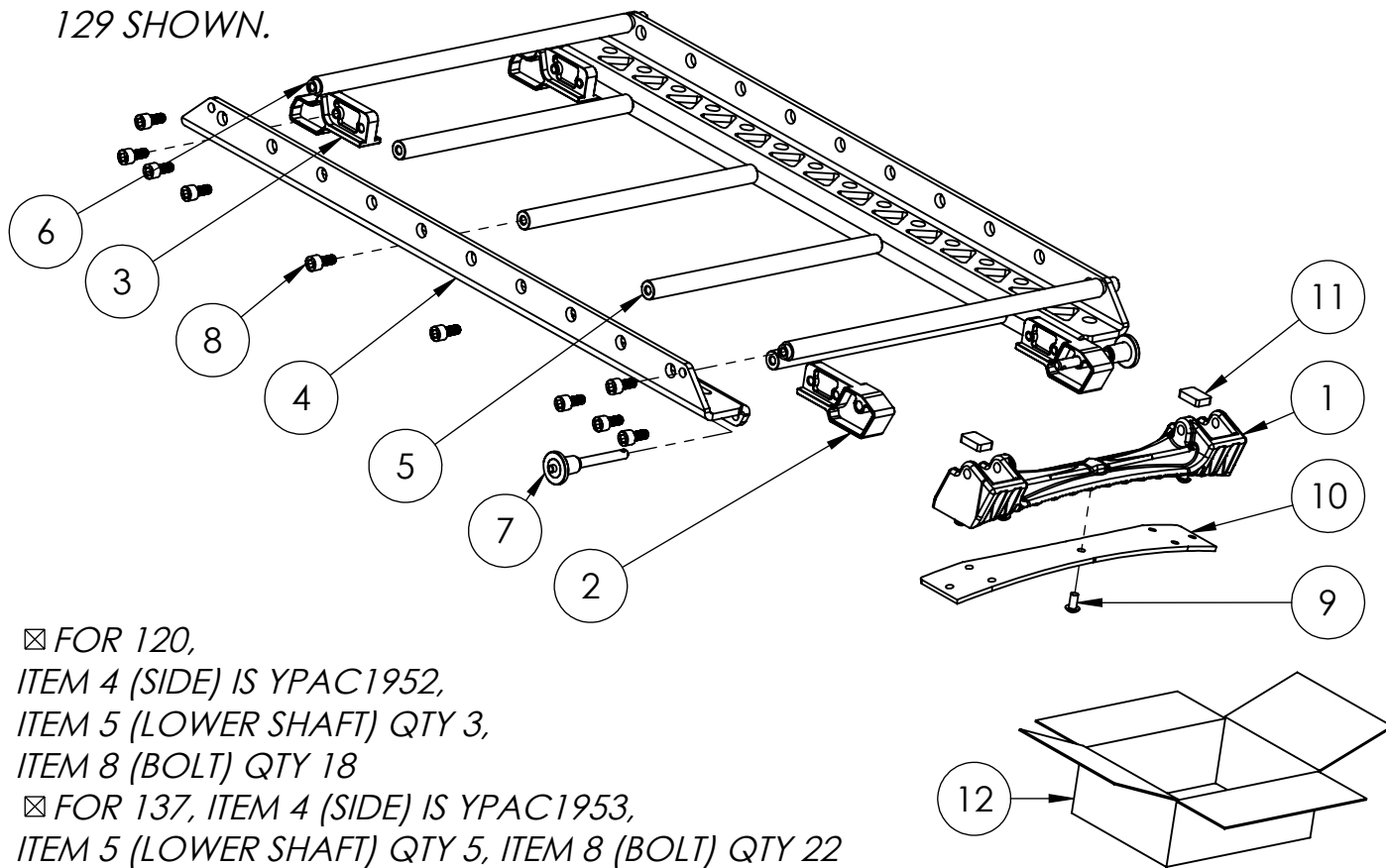
NOV 20-2016

WEIGHT:

2

1

129 SHOWN.



☒ FOR 120,
 ITEM 4 (SIDE) IS YPAC1952,
 ITEM 5 (LOWER SHAFT) QTY 3,
 ITEM 8 (BOLT) QTY 18
 ☒ FOR 137, ITEM 4 (SIDE) IS YPAC1953,
 ITEM 5 (LOWER SHAFT) QTY 5, ITEM 8 (BOLT) QTY 22

BOM Table

ITEM NO.	PART NUMBER	DESCRIPTION	QTY.
1	YPAC1666D6	MOUNT, REAR CARGO RACK	1
2	YPAC2230D4	BRACKET, REAR CARGO MOUNT	2
3	YPAC2229D4	BRACKET, FRONT CARGO MOUNT	2
4	YPAC1949D6	PLATE, 129" CARGO RACK	2
5	YPAC1950D1	SHAFT, CARGO RACK, LOWER	4
6	YPAC1951D2	SHAFT, CARGO RACK, UPPER	2
7	YPAC1753D1	PIN, QUICK, BUTTON HANDLE, 1.5" GRIP, .25" DIA	2
8	YPHW2298LB	BOLT, M6-1.0 X 14mm, SOCKET HEAD 5mm DRIVE, Ti	20
9	YPHW2302LB	BOLT, M5-0.8 X 10MM BUTTON HEAD SOCKET CAP A4 S/S	7
10	YPAC1734D2	FOAM, YPAC1666 CARGO MOUNT	1
11	YPAC1713D2	FOAM, CARGO PADS	2
12	YPBX2609	Box, Rack, 42.5x3.75x2.25	1

CARGO, RACK, 129 YETI ASSEMBLY COMPLETE

C3 POWERSPORTS 2014 LTD

#1 - 17 RENAULT CRESENT,
 ST. ALBERT, AB. T8N 4B7
 PH 780 419-2040 / 888 267-5554 www.c3powersports.com

PROPRIETARY AND CONFIDENTIAL

THE INFORMATION CONTAINED IN THIS DRAWING IS THE SOLE PROPERTY OF C3
 POWERSPORTS 2014 LTD. ANY REPRODUCTION IN PART OR AS A WHOLE WITHOUT THE
 WRITTEN PERMISSION OF C3 POWERSPORTS 2014 LTD IS PROHIBITED.



DWG. NO.

YAAC2268D2

REV.

DATE

NOV 20-2016

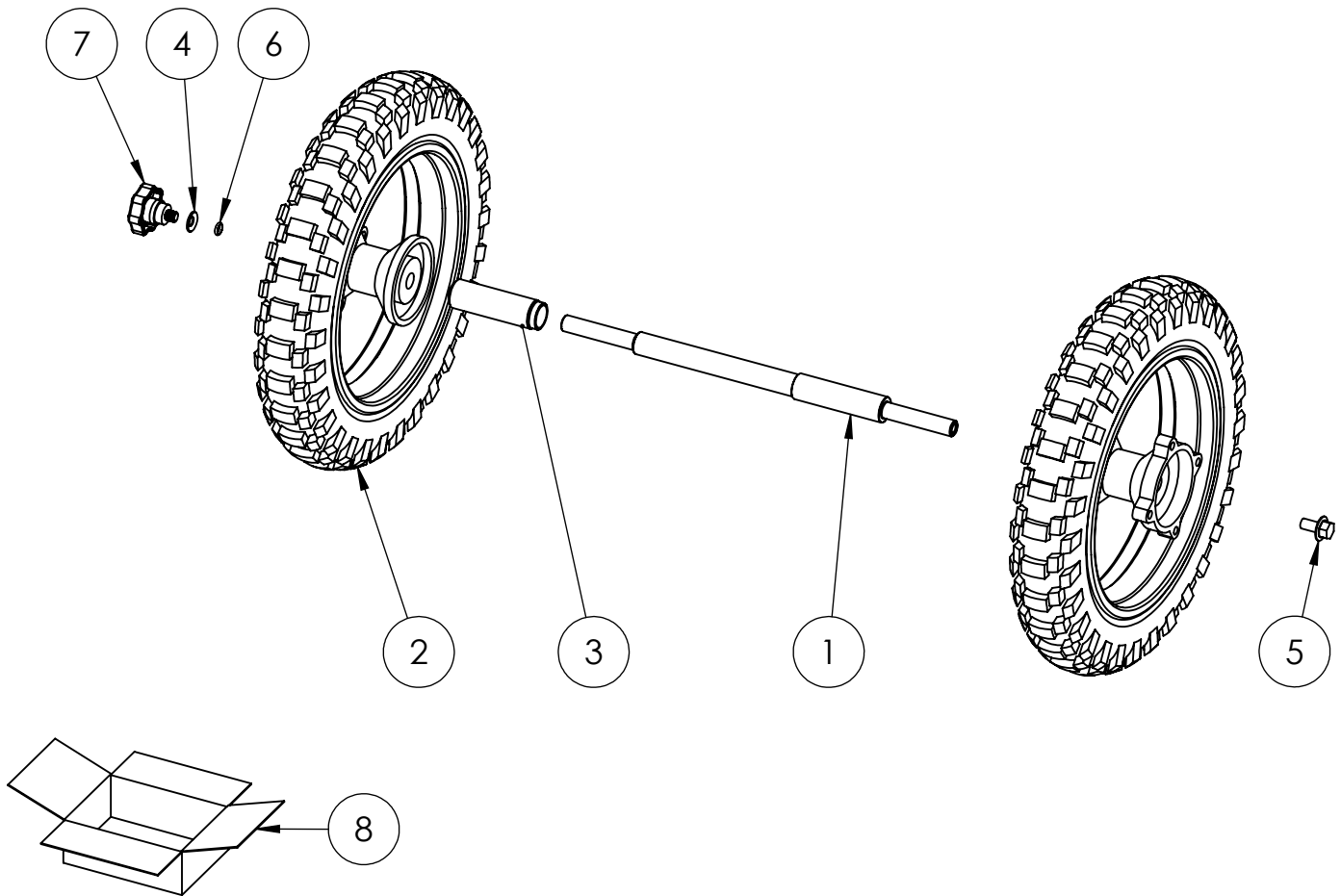
WEIGHT:

2

1

B

B



A

A

ITEM NO.	PART NUMBER	DESCRIPTION	QTY.
1	YPAC1242	FREEWHEEL AXLE, MACHINED, IMPERIAL	1
2	YPAC1146	WHEEL, 10 INCH	2
3	YPAC1587	SPACER, FREEWHEEL AXLE	1
4	YPHW1651	BELLEVILLE WASHER 20MMOD X 10.2MM ID X 1.5MM TH	1
5	YPHW1419	BOLT, M10-1.5 X 20MM FLANGE BOLT 10.9 ZINC FOR FREEWHEEL	1
6	YPHW1661	O-RING, #011 - FOR FREEWHEEL	1
7	YPHW1420	STAR GRIP BOLT M10-1.5	1
8	YPBX2607	Box, Freewheel, 32.25x17x3.75	1

FREEWHEEL KIT, YETI

C3 POWERSPORTS 2014 LTD

#1 - 17 RENAULT CRESENT,
ST. ALBERT, AB. T8N 4B7
PH 780 419-2040 888 267-5554 www.c3powersports.com

PROPRIETARY AND CONFIDENTIAL

THE INFORMATION CONTAINED IN THIS DRAWING IS THE SOLE PROPERTY OF C3 POWERSPORTS 2014 LTD. ANY REPRODUCTION IN PART OR AS A WHOLE WITHOUT THE WRITTEN PERMISSION OF C3 POWERSPORTS 2014 LTD IS PROHIBITED.



DWG. NO.

YAAC1281 D2

REV.

DATE

AUG 28-2015

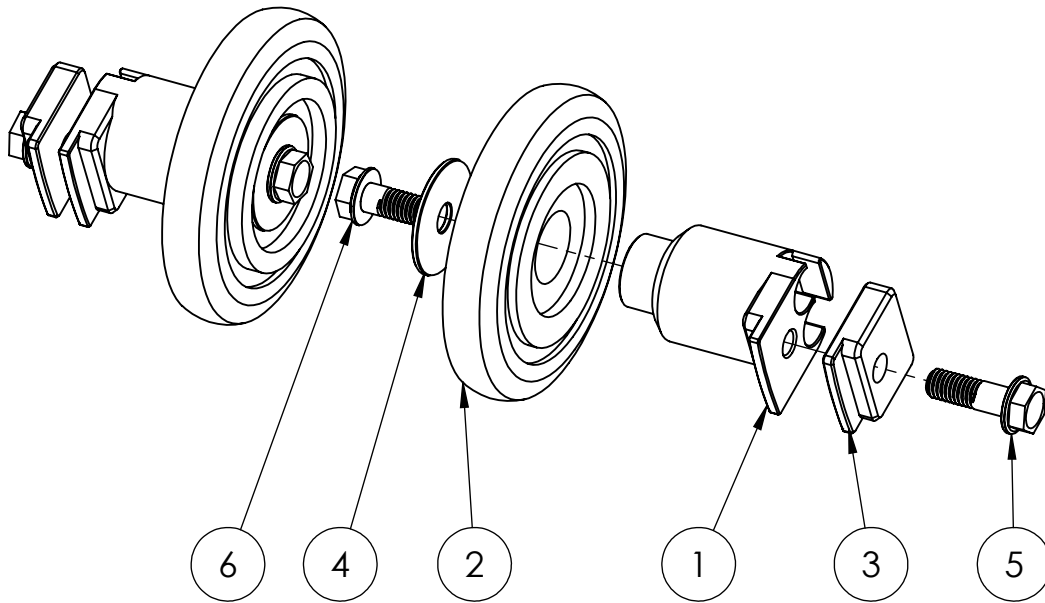
WEIGHT:

2

1

2

1



ITEM NO.	PART NUMBER	DESCRIPTION	QTY.
1	YPSU1857D2	MOUNT, 3.375" RAIL WHEEL	2
2	YPSU1217	WHEEL, 3.35" OD, 20MM ID BEARING	2
3	YPSU1729D1	WASHER, 3.375" RAIL WHEEL	2
4	YPHW2153	Washer, 5/16, 1.25 OD, .062 Thick	2
5	YPHW1897LBD1	BOLT, M8-1.25 X 25mm, FLANGE HEAD 12mm HEX DRIVE, Ti, Loctite Blue	2
6	YPHW1003LBD1	BOLT, M8-1.25 X 16mm, FLANGE HEAD 12mm HEX DRIVE, Ti	2

BOGIE WHEEL KIT (PAIR)

C3 POWERSPORTS 2014 LTD

#1 - 17 RENAULT CRESENT,
ST. ALBERT, AB. T8N 4B7
PH 780 419-2040 888 267-5554 www.c3powersports.com

PROPRIETARY AND CONFIDENTIAL

THE INFORMATION CONTAINED IN THIS DRAWING IS THE SOLE PROPERTY OF C3 POWERSPORTS 2014 LTD. ANY REPRODUCTION IN PART OR AS A WHOLE WITHOUT THE WRITTEN PERMISSION OF C3 POWERSPORTS 2014 LTD IS PROHIBITED.



DWG. NO.

YAAC1859 D1

REV.

DATE

AUG 28-2017

WEIGHT:

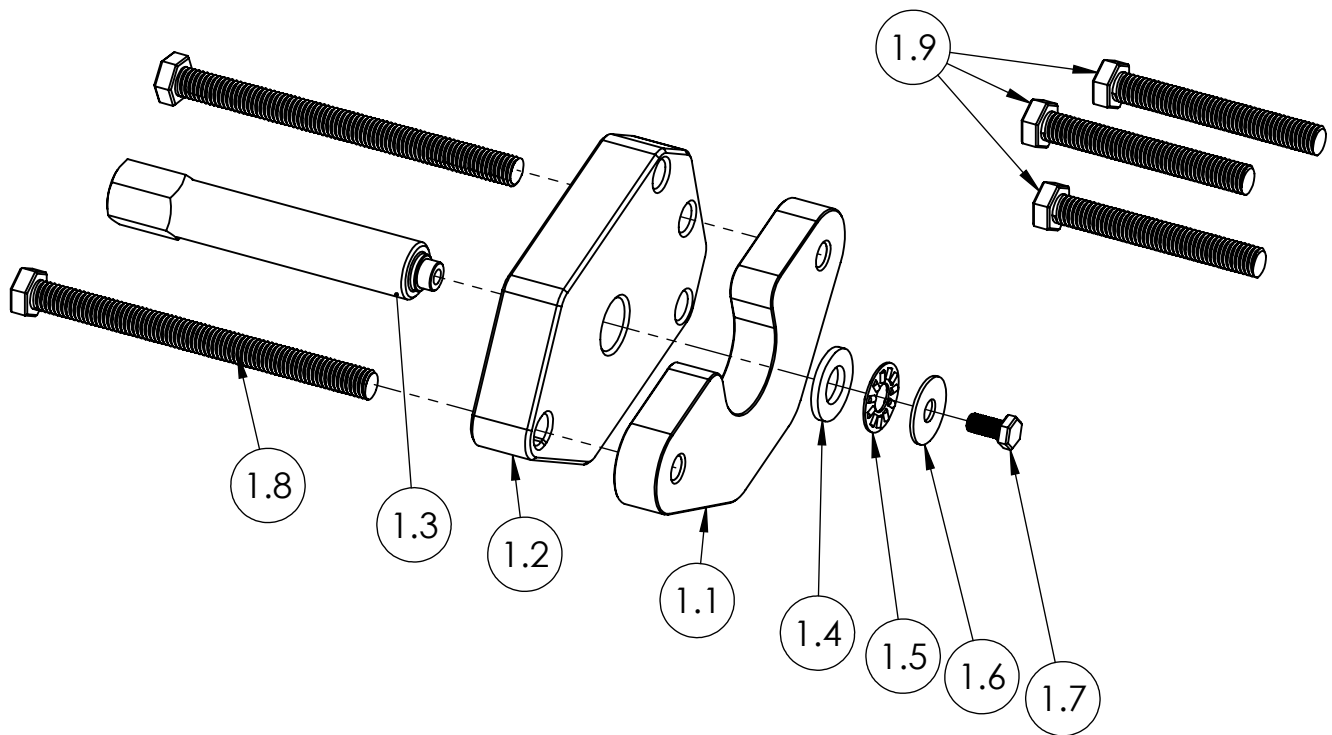
2

1

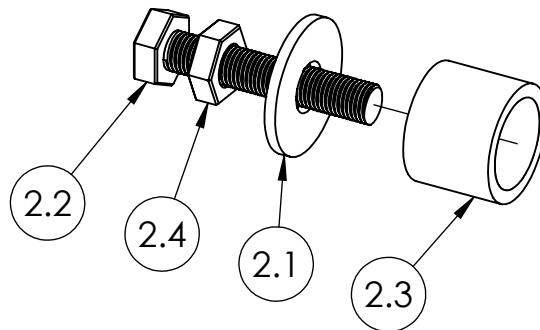
2

1

1: YAAC1785 BEARING PUSH TOOL



2: YAAC1945 SHAFT INSTALL TOOL



Tool Kit, Jack Shaft / Bearing Tool KIT

C3 POWERSPORTS 2014 LTD

#1 - 17 RENAULT CRESENT,
ST. ALBERT, AB. T8N 4B7
PH 780 419-2040 888 267-5554 www.c3powersports.com

PROPRIETARY AND CONFIDENTIAL

THE INFORMATION CONTAINED IN THIS DRAWING IS THE SOLE PROPERTY OF C3 POWERSPORTS 2014 LTD. ANY REPRODUCTION IN PART OR AS A WHOLE WITHOUT THE WRITTEN PERMISSION OF C3 POWERSPORTS 2014 LTD IS PROHIBITED.



DWG. NO.

REV.

YAAC1946 D1

DATE OCT 4 2017

WEIGHT:

2

1

2

1

ITEM NO.	PART NUMBER	DESCRIPTION	QTY.
1	YAAC1785	Tool, Bearing Puller Assembly	1
1.1	YPAC1850D1	TOOL, BEARING PULL PLATE	1
1.2	YPAC1232D4	Tool, Shaft Removal	1
1.3	YPAC1234D8	TOOL, SHAFT REMOVAL BOLT	1
1.4	YPHW1570	WASHER, M10X20X2, YLZN	1
1.5	YPHW2411	Bearing, Thrust Needle Roller, 5/16 X 3/4 X 5/64"	1
1.6	YPHW2415	Washer, 1/4" X .734 Yellow Zinc	1
1.7	YPHW2416	Bolt, M5-.08 X 10mm YL Zc Full Thread	1
1.8	YPHW1938	Bolt, M8X1.25 100mm, Class 8.8 Zinc	2
1.9	YPHW1939	Bolt, M8X1.25 60mm, Class 8.8 Zinc	3

2	YAAC1945	Tool, Shaft Install Tool Assembly	1
2.1	YPHW1943	Washer, 1/2" Fender 1/8" Thick	1
2.2	YPHW1942	Bolt, M12X1.25 - 60mm Z	1
2.3	YPHW1936D1	Collar, Install Tool Alu Sch 40 1.0" ID .15 Wall 1" Long	1
2.4	YPHW1944	NUT, M12-1.25 ZINC	1

Tool Kit, Jack Shaft / Bearing Tool KIT

C3 POWERSPORTS 2014 LTD

#1 - 17 RENAULT CRESENT,
ST. ALBERT, AB. T8N 4B7
PH 780 419-2040 888 267-5554 www.c3powersports.com

PROPRIETARY AND CONFIDENTIAL

THE INFORMATION CONTAINED IN THIS DRAWING IS THE SOLE PROPERTY OF C3 POWERSPORTS 2014 LTD. ANY REPRODUCTION IN PART OR AS A WHOLE WITHOUT THE WRITTEN PERMISSION OF C3 POWERSPORTS 2014 LTD IS PROHIBITED.



DWG. NO.

REV.

YAAC1946 D1

DATE

OCT 4 2017

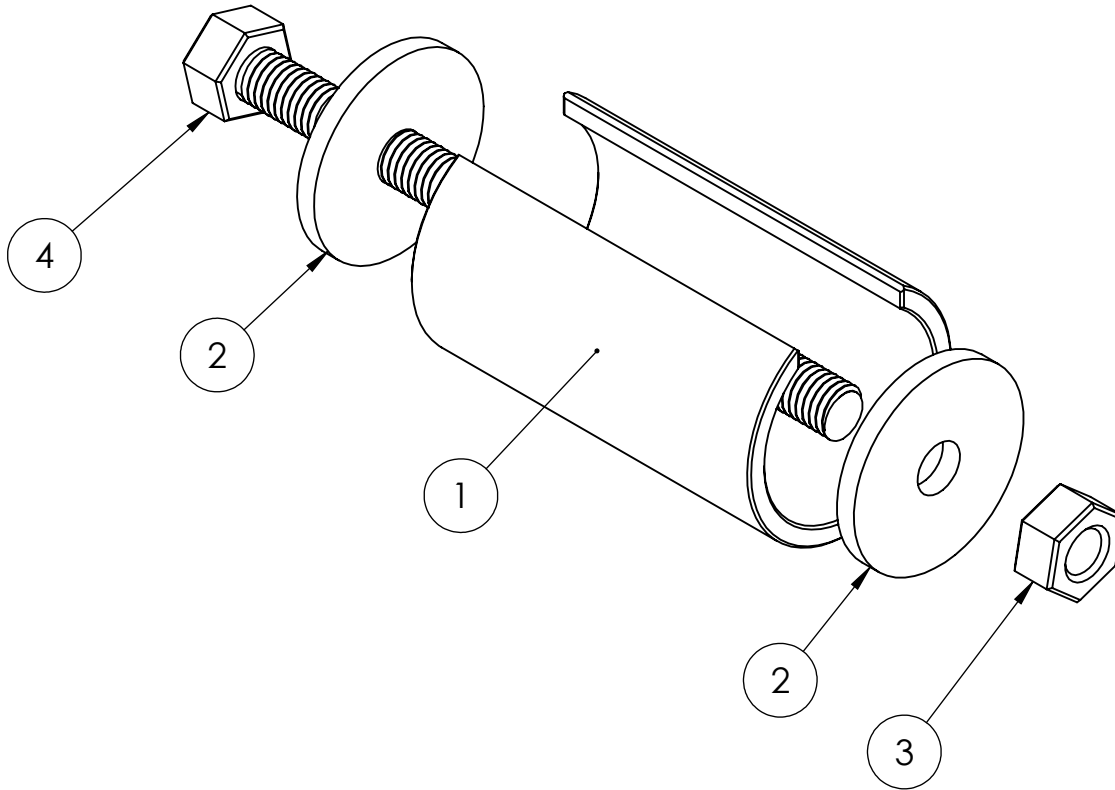
WEIGHT:

2

1

2

1



ITEM NO.	PART NUMBER	DESCRIPTION	QTY
1	YPHW1968D2	TOOL, BUSHING, BIKE MOUNT INSTALL AND REMOVE	1
2	YPHW1978	Washer, Fender 5/16 - M8, .125 Thick	2
3	YPHW1688	NUT, M8-1.25 ZINC	1
4	YPHW1709	BOLT, M8-1.25 X 110MM FULL THREAD	1

TOOL, BIKE MOUNT INSTALL TOOL WORKS W/2.1 & 2.2 PLATES

C3 POWERSPORTS 2014 LTD

#1 - 17 RENAULT CRESENT,
ST. ALBERT, AB. T8N 4B7
PH 780 419-2040 888 267-5554 www.c3powersports.com

PROPRIETARY AND CONFIDENTIAL

THE INFORMATION CONTAINED IN THIS DRAWING IS THE SOLE PROPERTY OF C3 POWERSPORTS 2014 LTD. ANY REPRODUCTION IN PART OR AS A WHOLE WITHOUT THE WRITTEN PERMISSION OF C3 POWERSPORTS 2014 LTD IS PROHIBITED.



DWG. NO.

REV.

YAAC1986 D1

DATE OCT 4 2017

WEIGHT:

2

1